

# 2022 PRIMER PUMPS & GAS PUMPS

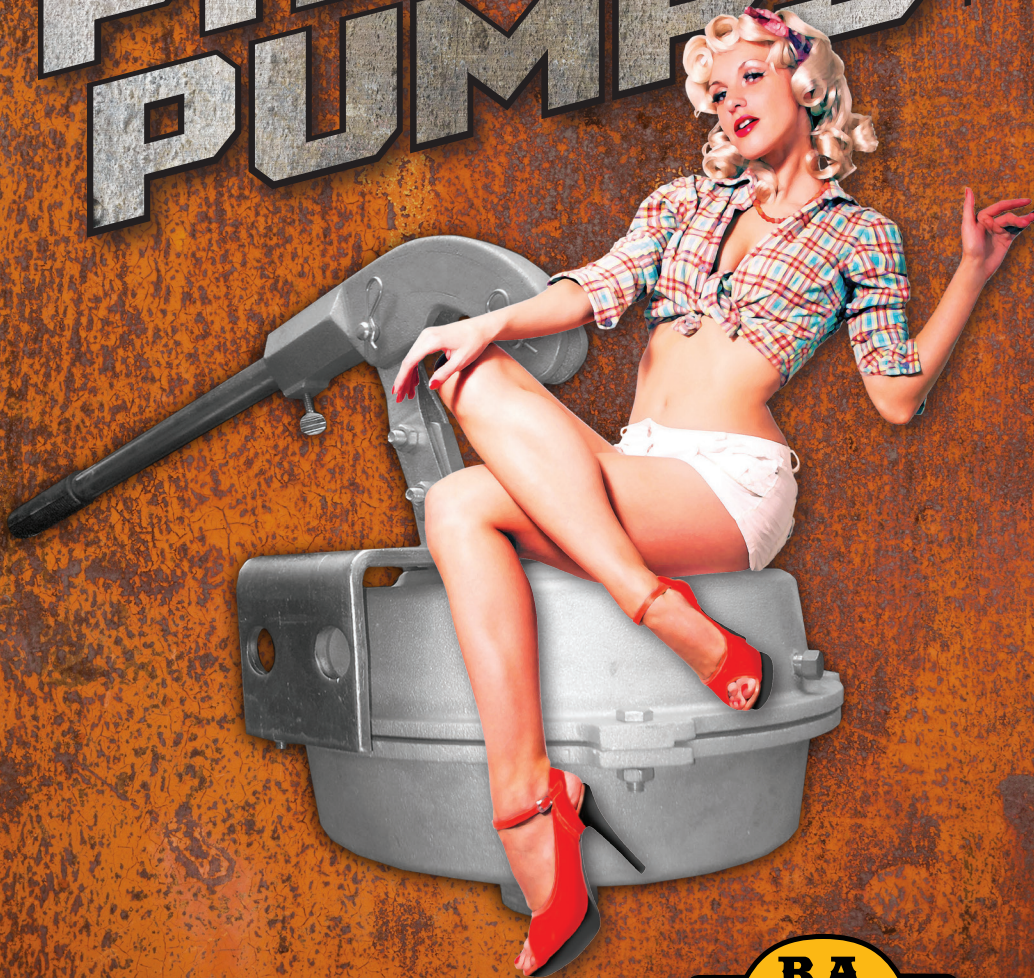
**B.A.  
FISCHER**

EST. 1977

PURVEYORS OF THE FINEST

IRRIGATION SUPPLIES

BAFSCO  
**PRIMER  
PUMPS**.COM



PURVEYORS OF THE FINEST IRRIGATION SUPPLIES SINCE 1977

**B.A.  
FISCHER**

SALES CO., INC.

1977

## REPLACEMENT DIAPHRAGMS



### PROTEK #5 DIAPHRAGM

| PART #                     | DESCRIPTION    | LIST  |
|----------------------------|----------------|-------|
| 502-01                     | Protek #5 B183 | 71.20 |
| 5 1/2" Top x 4 1/2" Bottom |                |       |



### BERKELY TYPE DIAPHRAGM

| PART #                     | DESCRIPTION      | LIST  |
|----------------------------|------------------|-------|
| 502-02                     | Fits Berkely #6D | 25.00 |
| 6 7/8" Top x 5 7/8" Bottom |                  |       |



### BAFSCO™ #7 DIAPHRAGM

| PART #                     | DESCRIPTION                | LIST  |
|----------------------------|----------------------------|-------|
| 502-03                     | Fits BafSCO #7 & Protek #7 | 45.00 |
| 7 3/4" Top x 6 1/4" Bottom |                            |       |



### BAFSCO™ #9 DIAPHRAGM

| PART #                     | DESCRIPTION                | LIST  |
|----------------------------|----------------------------|-------|
| 502-04                     | Fits BafSCO #9 & Protek #9 | 55.00 |
| 9 7/8" Top x 7 3/4" Bottom |                            |       |



### BYCO DIAPHRAGM

| PART #                     | DESCRIPTION                 | LIST  |
|----------------------------|-----------------------------|-------|
| 502-05                     | Fits Byco 6" & Tuf-Skin® 6" | 37.75 |
| 6 5/8" Top x 5 5/8" Bottom |                             |       |



### BAFSCO™ #6 DIAPHRAGM

| PART #                     | DESCRIPTION                  | LIST  |
|----------------------------|------------------------------|-------|
| 502-06                     | Fits BafSCO #6 & Wade 9-30-3 | 20.00 |
| 6 7/8" Top x 5 3/4" Bottom |                              |       |



### PROTEK DIAPHRAGM

| PART #                     | DESCRIPTION | LIST   |
|----------------------------|-------------|--------|
| 502-07                     | Protek 700  | 105.00 |
| 7 7/8" Top x 5 1/2" Bottom |             |        |



### 9" DIAPHRAGM

| PART #                     | DESCRIPTION                | LIST  |
|----------------------------|----------------------------|-------|
| 502-08                     | Fits Protek & Berkely #900 | 60.00 |
| 9 3/4" Top x 8 3/4" Bottom |                            |       |



### 900 TYPE DIAPHRAGM

| PART #                     | DESCRIPTION            | LIST  |
|----------------------------|------------------------|-------|
| 502-09                     | Fits Protek & Byco 900 | 60.00 |
| 9 7/8" Top x 5 1/2" Bottom |                        |       |



### BYCO DIAPHRAGM

| PART #                     | DESCRIPTION                 | LIST  |
|----------------------------|-----------------------------|-------|
| 502-11                     | Fits Byco 9" & Tuf-skin® 9" | 55.00 |
| 9 3/4" Top x 7 3/4" Bottom |                             |       |



PRIMERPUMPS.COM



# PRIMER PUMPS



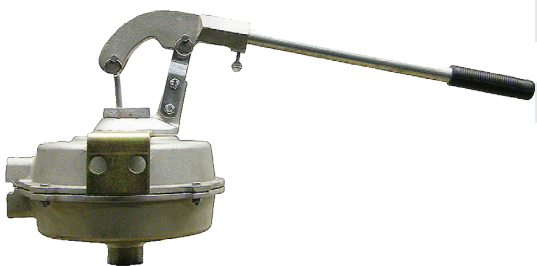
## #6 PRIMER PUMP FOR 2" - 5" PUMPS

| PART # | DESCRIPTION              |        |
|--------|--------------------------|--------|
| 502-10 | 6" Primer Pump, 1" Inlet | 165.00 |



## #7 PRIMER PUMP FOR 4" - 6" PUMPS

| PART # | DESCRIPTION                        |        |
|--------|------------------------------------|--------|
| 502-30 | 7" Primer Pump, 1" or 1 1/2" Inlet | 290.00 |



## #9 PRIMER PUMP FOR 6" & LARGER PUMPS

| PART # | DESCRIPTION                                  |        |
|--------|--|--------|
| 502-40 | 9" Primer Pump, 3/4" FPT or 1 1/2" MPT Inlet | 410.00 |

### PRIMER PUMP STROKE CHART

| PRIMER | # OF STROKES TO PRIME THRU 25' OF 4" SUCTION |        |        | # OF STROKES TO PRIME THRU 25' OF 6" SUCTION |        |        | # OF STRKES TO PRIME THRU 25' OF 8" SUCTION |        |        |
|--------|--|--------|--------|--|--------|--------|---|--------|--------|
|        | 5" HG  | 10" HG | 15" HG | 5" HG  | 10" HG | 15" HG | 5" HG                                       | 10" HG | 15" HG |
| 502-10 | 10   | 27     | 55     |  |        |        |   |        |        |
| 502-30 | 6  | 15     | 32     | 12   | 33     | 65     |   |        |        |
| 502-40 | 4  | 9      | 20     | 10   | 23     | 45     | 17  | 37     | 77     |

**BAFSCO™ #6 PRIMER PUMP PARTS**



**BAFSCO™ #6 PRIMER PUMP**

| PART # | DESCRIPTION                 | LIST   |
|--------|-----------------------------|--------|
| 502-10 | 1" Inlet<br>For 2"-5" Pumps | 165.00 |



**HANDLE AND GRIP**

| PART # | DESCRIPTION       | LIST  |
|--------|-------------------|-------|
| 502-54 | For #6, #7 and #9 | 20.50 |
| 502-41 | Wade 9-30-1       | 30.00 |



**HANDLE BRACKET**

| PART # | DESCRIPTION       | LIST  |
|--------|-------------------|-------|
| 502-55 | For #6, #7 and #9 | 42.00 |
| 502-36 | Fast Pin          | 2.00  |



**HANDLE SUPPORT**

| PART # | DESCRIPTION | LIST  |
|--------|-------------|-------|
| 502-42 | For 6"      | 10.50 |



**LOCK NUT**

| PART # | DESCRIPTION             | LIST |
|--------|-------------------------|------|
| 502-45 | Handle Support Lock Nut | 3.90 |



**CONNECTING ROD**

| PART # | DESCRIPTION       | LIST |
|--------|-------------------|------|
| 502-29 | For #6, #7 and #9 | 5.50 |



**STEEL DIAPHRAGM DISC**

| PART # | DESCRIPTION | LIST  |
|--------|-------------|-------|
| 502-43 | 1 Disc      | 11.00 |



**BAFSCO™ DIAPHRAGM**

| PART # | DESCRIPTION | LIST  |
|--------|-------------|-------|
| 502-06 | BafSCO #6   | 20.00 |



**BALL CHECK VALVE**

| PART # | DESCRIPTION          | LIST  |
|--------|----------------------|-------|
| 502-47 | Brass with S.S. Ball | 13.40 |
| 502-48 | Stainless Ball       | 7.00  |



**UPPER HOUSING**

| PART # | DESCRIPTION   | LIST  |
|--------|---------------|-------|
| 502-38 | Body Top Half | 40.00 |



**LOWER HOUSING**

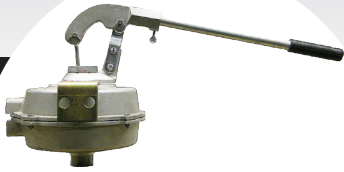
| PART # | DESCRIPTION     | LIST  |
|--------|-----------------|-------|
| 502-39 | Body Lower Half | 40.00 |



**RUBBER VALVE**

| PART # | DESCRIPTION            | LIST |
|--------|------------------------|------|
| 502-46 | Rubber Discharge Valve | 9.25 |

**BAFSCO™ #7 & #9 PRIMER PUMP PARTS**



**BAFSCO™ PRIMER PUMPS**

| PART # | DESCRIPTION              | LIST   |
|--------|--------------------------|--------|
| 502-40 | #9, 3/4" or 1 1/2" Inlet | 410.00 |
| 502-30 | #7, 1" or 1 1/2" Inlet   | 290.00 |



**HANDLE AND GRIP**

| PART # | DESCRIPTION       | LIST  |
|--------|-------------------|-------|
| 502-54 | For #6, #7 and #9 | 20.50 |



**HANDLE BRACKET**

| PART # | DESCRIPTION       | LIST  |
|--------|-------------------|-------|
| 502-55 | For #6, #7 and #9 | 42.00 |
| 502-36 | Fast Pin          | 2.00  |



**HANDLE SUPPORT**

| PART # | DESCRIPTION   | LIST  |
|--------|---------------|-------|
| 502-32 | For 9" and 7" | 11.15 |
| 502-37 | Fulcrum Links | 10.20 |



**LOCK NUT**

| PART # | DESCRIPTION             | LIST |
|--------|-------------------------|------|
| 502-45 | Handle Support Lock Nut | 3.90 |



**CONNECTING ROD**

| PART # | DESCRIPTION       | LIST |
|--------|-------------------|------|
| 502-29 | For #6, #7 and #9 | 5.50 |



**MOUNTING BRACKET**

| PART # | DESCRIPTION   | LIST  |
|--------|---------------|-------|
| 502-35 | For 7" and 9" | 29.40 |



**BAFSCO™ DIAPHRAGMS**

| PART # | DESCRIPTION | LIST  |
|--------|-------------|-------|
| 502-03 | BafSCO #7   | 45.00 |
| 502-04 | BafSCO #9   | 55.00 |



**CHECK VALVE**

| PART # | DESCRIPTION             | LIST  |
|--------|-------------------------|-------|
| 502-27 | #9 Rubber Check Valve   | 2.50  |
| 502-47 | #7 Brass with S.S. Ball | 13.40 |



**UPPER HOUSING**

| PART # | DESCRIPTION      | LIST  |
|--------|------------------|-------|
| 502-28 | #9 Body Top Half | 85.00 |
| 502-52 | #7 Body Top Half | 75.00 |



**LOWER HOUSING**

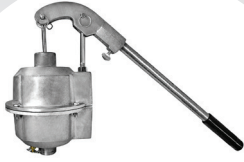
| PART # | DESCRIPTION        | LIST  |
|--------|--------------------|-------|
| 502-26 | #9 Body Lower Half | 85.00 |
| 502-51 | #7 Body Lower Half | 75.00 |



**DRAIN COCK**

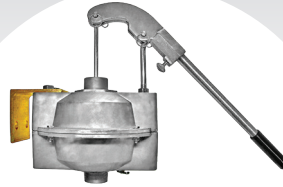
| PART # | DESCRIPTION | LIST |
|--------|-------------|------|
| 502-21 | Drain Valve | 9.00 |

PROTEK PRIMER PUMPS & PARTS



DP5 PRIMER PUMP

| PART #                          | DESCRIPTION       | LIST   |
|---------------------------------|-------------------|--------|
| 502-20                          | 3/4" & 1 1/4" NPT | 258.55 |
| Volume discounts for 6+ and 12+ |                   |        |



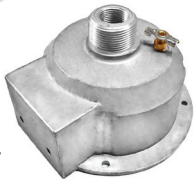
DP7 PRIMER PUMP

| PART #                          | DESCRIPTION       | LIST   |
|---------------------------------|-------------------|--------|
| DP7                             | 3/4" & 1 1/2" NPT | 498.55 |
| Volume discounts for 6+ and 12+ |                   |        |



DP9 PRIMER PUMP

| PART #                          | DESCRIPTION       | LIST   |
|---------------------------------|-------------------|--------|
| DP9                             | 3/4" & 1 1/2" NPT | 716.20 |
| Volume discounts for 6+ and 12+ |                   |        |



- 57

LOWER HOUSING

| PART # | DESCRIPTION | LIST   |
|--------|-------------|--------|
| D0055  | For 5"      | 103.70 |
| D0087  | For 7"      | 176.50 |
| D0062  | For 9"      | 203.95 |



D0088

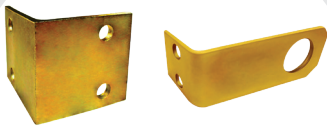
UPPER HOUSING

| PART # | DESCRIPTION | LIST   |
|--------|-------------|--------|
| D0056  | For #5      | 103.70 |
| D0088  | For #7      | 176.50 |
| D0063  | For #9      | 203.95 |



DRIAPRAGMS

| PART # | DESCRIPTION        | LIST  |
|--------|--------------------|-------|
| 502-01 | For #5             | 71.20 |
| 502-62 | #5 Diaphragm Plate | 14.00 |
| 502-03 | For #7             | 45.00 |
| 502-04 | For #9             | 55.00 |
| 502-27 | Check Valve        | 2.50  |



MOUNTING BRACKET

| PART # | DESCRIPTION | LIST  |
|--------|-------------|-------|
| D0107  | For DP7     | 67.75 |
| 502-35 | For #9      | 29.40 |



HANDLE PARTS

| PART # | DESCRIPTION            | LIST  |
|--------|------------------------|-------|
| 502-55 | Bracket Fits All       | 42.00 |
| 502-54 | Handle & Grip Fits All | 20.50 |



| PART # | DESCRIPTION             | LIST  |
|--------|-------------------------|-------|
| 502-29 | Connecting Rod Fits All | 5.50  |
| D0050  | Fulcrum Eyebolt, 5 & 7  | 25.00 |
| D0051  | Fulcrum Eyebolt 9       | 26.80 |

PRIMER CAPACITY CHART

| PRIMER | # OF STROKES TO PRIME THRU 25' OF 4" SUCTION |        |        | # OF STROKES TO PRIME THRU 25' OF 6" SUCTION |        |        | # OF STROKES TO PRIME THRU 25' OF 8" SUCTION |        |        |
|--------|--|--------|--------|--|--------|--------|--|--------|--------|
|        | 5" HG  | 10" HG | 15" HG | 5" HG  | 10" HG | 15" HG | 5" HG  | 10" HG | 15" HG |
| DP5    | 10   | 27     | 55     |  |        |        |  |        |        |
| DP7    | 6  | 15     | 32     | 12   | 33     | 65     |  |        |        |
| DP9    | 4  | 9      | 20     | 10   | 23     | 45     | 17   | 37     | 77     |

## PROTEK MANIFOLD PRIMERS AND POWER PRIMERS



### MANIFOLD PRIMER MP2000

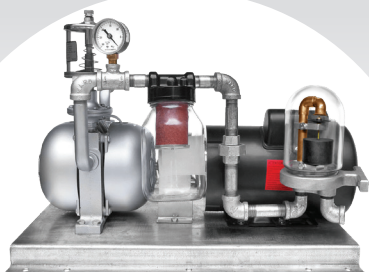
| PART NO. | DIMENSIONS             | LIST   |
|----------|------------------------|--------|
| MP2000   | 5" x 4" x 9" - 3.5 lbs | 479.30 |

- 1/4" Inlet top and bottom. Mounting 1/4" bolt or screw.
- Fast, efficient priming using engine manifold vacuum while engine runs at slow speed.
- All working parts enclosed in full transparent plastic housing for observation of primer operation.
- Lightweight plastic float with rubber "cup type" valve provides instant and positive closure as soon as priming is completed.
- Easy to operate. Start engine and open one valve to begin priming.
- Can be readily installed on any gasoline or LPB engine of four or more cylinders to provide suction lift up to 20'



### MANIFOLD PRIMER MP1000

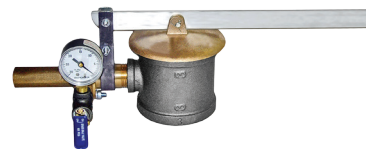
| PART NO.   | DIMENSIONS                | LIST   |
|--|---------------------------|--------|
| 502-80   | 7" x 4" x 3 1/2" - 3 lbs. | 484.80 |
| • 3/8" Inlet Bottom and Top. Mounting 1/4" screws. |                           |        |
| 502-88   | Top Cover Assembly        | 131.90 |
| 502-89   | Lower Cover               | 56.10  |
| 502-91   | Clear Lower Housing       | 48.75  |
| 502-92   | Clear Upper Housing       | 48.75  |
| 502-93   | Mounting Brackets         | 20.70  |
| 502-94   | Float Assembly            | 49.70  |
| 502-95   | Tie Bolts with Nuts       | 16.50  |
| 502-96   | Gaskets                   | 1.75   |
| 502-97   | Angle Valve               | 59.40  |
| 502-98   | Packing Gland Assembly    | 33.80  |
| 502-99   | Valve Stem Assembly       | 37.75  |
| 502-100  | Cork Seal Washer          | 5.45   |
| 502-101  | 3/8" Ball with Pin        | 3.85   |



### POWER PRIMERS

| PART NO. | DESCRIPTION                       | LIST     |
|----------|-----------------------------------|----------|
| 502-90   | 1PH or 3PH AC, 230V/480V 60/50 Hz | 3,615.00 |
| 502-50   | 12V or 24V DC                     | 3,644.40 |

- Converts centrifugal pumps to self-primers.
- Fast, efficient primer for pumps with high suction lifts.
- Ideal for diesel or gasoline powered engines, direct coupled pumps.
- Requires minimum maintenance.

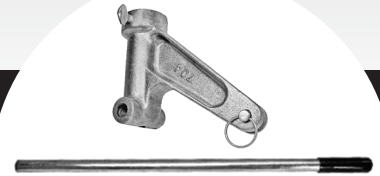
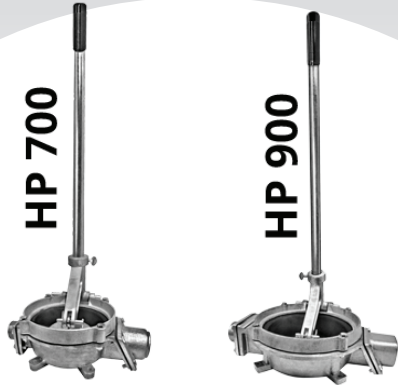


### EXHAUST PRIMERS

| PART NO.   | *DISPLACEMENT AND **ADAPTER       | LIST |
|--|-----------------------------------|------|
| EP(*)(**)  | *60/90, 150/225, 250/300, 350/500 | Call |
| ** 1", 1 1/4", 1 1/2", 2", 2 1/2", 3", 4" NPT or 1 1/2", 1 3/4", 2", 2 1/2", 3", 3 1/2", 4 1/2" PE |                                   |      |

- Priming can be completed in 10 seconds to two minutes.
- Suction lifts of 20 ft. may be obtained under typical conditions.
- Units are designed to produce vacuum of 18 to 22 inches of mercury (Hg).

PROTEK HP700 & HP900 HAND DIAPHRAGM PUMP

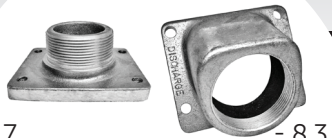


PROTEK PUMPS

| PART #                          | MODEL | IN/OUTLET | LIST     |
|---------------------------------|-------|-----------|----------|
| 502-60                          | HP700 | 1 1/2"    | 957.45   |
| 502-70                          | HP900 | 2"        | 1,105.60 |
| Volume discounts for 6+ and 12+ |       |           |          |

FULCRUM BRACKET

| PART # | DESCRIPTION           | LIST   |
|--------|-----------------------|--------|
| 502-78 | For 900 Assembly      | 102.60 |
| 502-65 | Fulcrum Long Pin      | 20.40  |
| 502-64 | Handle & Grip 700/900 | 52.95  |



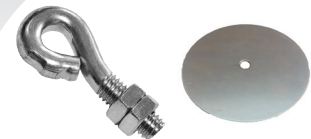
INLET & OUTLET FLANGES

| PART # | DESCRIPTION      | LIST   |
|--------|------------------|--------|
| 502-87 | Suction Flange   | 112.25 |
| 502-83 | Discharge Flange | 121.20 |



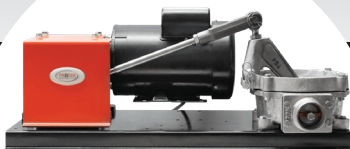
VALVES

| PART # | DESCRIPTION           | LIST  |
|--------|-----------------------|-------|
| 502-84 | 900 Discharge/Suction | 42.60 |
| 502-86 | 700 Suction Valve     | 46.15 |



CONNECTING ROD

| PART # | DESCRIPTION       | LIST  |
|--------|-------------------|-------|
| 502-72 | For 700 and 900   | 5.00  |
| 502-81 | Lower/Upper Plate | 35.85 |



MOTORIZED PUMP

| PART # | DESCRIPTION | LIST        |
|--------|-------------|-------------|
| HP900E | Electric    | Call        |
| PH700G | Gas Engine  | for Pricing |



DIAPHRAGMS

| PART # | DESCRIPTION | LIST   |
|--------|-------------|--------|
| 502-07 | 700         | 105.00 |
| 502-09 | 900         | 60.00  |



RETAINER RING

| PART # | DESCRIPTION       | LIST   |
|--------|-------------------|--------|
| H0901  | 900 Pump Body     | 468.25 |
| 502-79 | 900 Retainer Ring | 167.60 |

PRIMER CAPACITY CHART

| MODEL | INLET<br>OUTLET | CAPACITY              | MAXIMUM<br>SUCTION LIFT | MAXIMUM<br>DISCHARGE HEAD | APPROXIMATE<br>NET WEIGHT |
|-------|-----------------|-----------------------|-------------------------|---------------------------|---------------------------|
| HP700 | 1 1/2"          | 1/2 GALLON PER STROKE | 20'                     | 10'                       | 15#                       |
| HP900 | 2"              | 1 GALLON PER STROKE   | 15'                     | 10'                       | 18#                       |

## BYCO 900 HAND DIAPHRAGM PUMP



**BYCO 900 PUMP**

| PART #  | INLET/OUTLET | LIST   |
|---------|--------------|--------|
| 503-900 | 2"           | 684.90 |

- 1 Gallon stroke capacity
- Long steel handle gives maximum leverage



**FULCRUM BRACKET**

| PART #  | DESCRIPTION      | LIST  |
|---------|------------------|-------|
| 503-904 | Fulcrum          | 70.55 |
| 503-902 | Fulcrum Long Pin | 20.15 |



**FLANGE**

| PART #  | DESCRIPTION    | LIST  |
|---------|----------------|-------|
| 503-905 | Suction Flange | 96.15 |



**FLANGE**

| PART #  | DESCRIPTION      | LIST  |
|---------|------------------|-------|
| 503-906 | Discharge Flange | 99.55 |



**VALVES**

| PART #  | DESCRIPTION       | LIST  |
|---------|-------------------|-------|
| 502-910 | Discharge/Suction | 38.65 |

**PUMP BODY**

| PART #  | DESCRIPTION | LIST   |
|---------|-------------|--------|
| 503-901 | Pump Body   | 348.20 |



**REPLACEMENT DIAPHRAGM**

| PART #  | DESCRIPTION      | LIST  |
|---------|------------------|-------|
| 502-09  | Diaphragm        | 60.00 |
| 503-912 | Eyebolt Assembly | 5.00  |
| 503-907 | Diaphragm Plate  | 26.90 |



**RETAINER RING**

| PART #  | DESCRIPTION   | LIST   |
|---------|---------------|--------|
| 503-903 | Retainer Ring | 115.35 |

\*PARTS INTERCHANGE WITH PROTEK 900 TYPE PUMP

## BAFSCO™ GASOLINE POWERED TRANSFER AND PRESSURE PUMPS



| GASOLINE PUMPS |                       |        |
|----------------|-----------------------|--------|
| PART NO.       | DESCRIPTION           | LIST   |
| TP2            | 2" Transfer Pump      | 325.00 |
| TP3            | 3" Transfer Pump      | 495.00 |
| TP4            | 4" Transfer Pump      |        |
| LTF2           | 2" High Pressure Pump | 495.00 |

| MODEL  |                       | TP2                     | TP3 | TP4 |
|--------|-----------------------|-------------------------|-----|-----|
| PUMP   | Suction               | 2"                      | 3"  | 4"  |
|        | Discharge             | 2"                      | 3"  | 4"  |
|        | Cont. capacity GPM    | 96                      | 158 | 171 |
|        | Max. capacity GPM     | 158                     | 270 | 290 |
|        | Max. head (ft)        | 91                      | 82  | 131 |
|        | Cont. head (ft)       | 49                      | 42  | 68  |
|        | Max suction head (ft) | 26                      | 26  | 26  |
| Engine | Type                  | Air-cooled 4-stroke OHV |     |     |
|        | Output(HP)            | 5.5                     | 5.5 | 8   |
|        | Fuel capacity (gal)   | 9                       | 9   | 15  |
|        | Net Weight LBS        | 55                      | 66  | 103 |

- AIR COOLED 4 STROKE OHV WITH TRANSISTORIZED IGNITION, RECOIL START AND CAST IRON CYLINDER SLEEVE
- PRESSURE CAST ALUMINUM PUMP BODY
- HIGH QUALITY, MECHANICALLY SEALED EQUIPMENT
- NPT INLET AND OUTLET
- HOSE AND ACCESSORIES ARE AVAILABLE

