

2023 GATED PIPE



GATED PIPE GATES



TRIAD DAM GATES

PART #	DESCRIPTION	BOX QTY.	LIST
DG-6	6" Complete	200	1.75
DG-8	8" 10" 12" Complete	200	1.75

DAM GATE COMPONENTS

PART #	DESCRIPTION	LIST
DG-T	Top	0.90
DG-B-6	6" Bottom	1.55
DG-B-8	8" Bottom	1.55
DG-C	Clip	0.40

DAM GATE TOOL

PART #	DESCRIPTION	LIST
RG-W	Install Tool	6.75



KEYHOLE GATE

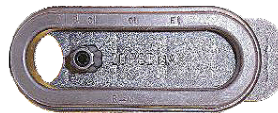
PART #	DESCRIPTION	BOX QTY.	LIST
KHG-6	6" Complete	200	2.60
KHG-8	8" 10" 12" Complete	200	2.60

KEYHOLE GATE COMPONENTS

PART #	DESCRIPTION	LIST
KHG-T	Top	1.15
KHG-B-6	6" Bottom	2.15
KHG-B-8	8" Bottom	2.15
KHG-C	Clip	0.50

BELTED PIPE TURNER

PART #	DESCRIPTION	LIST
BPT	Heavy Duty Strap Wrench	78.00



RECTANGLE GATE

PART #	DESCRIPTION	BOX	LIST
RGP-8	8"-10" Plastic Pipe	200	NLA
RGA-8	8"-10" Alum Pipe	200	NLA
RGP-B-8	8" Bottom		NLA
RGP-T	8" Top		NLA

AMES OVAL GATE

PART #	DESCRIPTION	LIST
ARG	Complete	2.55
ARG-R	Rubber	1.70
ARG-S	Plastic Slide	1.00
	300 Per Box	

PIPE TURNER

PART #	DESCRIPTION	LIST
PT-6	6"	215.00
PT-8	8"	215.00
PT-10	10"	215.00
PT-12	12"	215.00

GATED PIPE GATES



A-GATE

PART #	DESCRIPTION	BOX	LIST
AGATE	8" Complete	200	1.75



IRRIGATION SOCKS

PART #	DESCRIPTION	LIST
330	3" x 30" Vinyl	8.00
336	3" x 36" Vinyl & Mesh	8.00
436	4" x 36" Vinyl	8.00
440	4" x 40" Vinyl & Mesh	8.00



SOCK CLIPS

PART #	DESCRIPTION	LIST
6R	6" Sock Clip	5.50
8R	8" Sock Clip	5.55
10R	10" Sock Clip	5.55
12R	12" Sock Clip	6.15



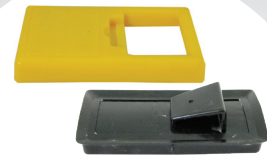
HASTINGS NEW STYLE GATE

PART #	DESCRIPTION	BOX	LIST
HNG-6	6" Complete	200	4.60
HNG-8	8" 9" 10"	200	4.60
HNG-B-6	6" Bottom	200	3.55
HNG-B-8	8" Bottom	200	3.55
HYGT	Top	200	1.05



HASTINGS UNIVERSAL GATE

PART #	DESCRIPTION	LIST
HUG-8	8" 9" 10"	3.85
HUG-B-8	Bottom	2.85
HYGT	Top	1.05



HASTINGS CONVERSION GATE

PART #	DESCRIPTION	LIST
HCG	Complete	13.85
HCG-B	Bottom	12.00
HCG-T	Top	1.90



CAP LOCK

PART #	DESCRIPTION	LIST
CL6	6" End Plug Retainer	40.75
CL8	8" End Plug Retainer	42.50
CL10	10" End Plug Retainer	44.25
CL12	12" End Plug Retainer	49.60



SOFT FLOW SCREEN

PART #	DESCRIPTION	LIST
SFS	Erosion Control	3.30



PLUG LOCKS

PART #	DESCRIPTION	LIST
PL6	6"	34.45
PL8	8"	36.70
PL10	10"	40.00
PL12	12"	46.70

SURFACE FITTINGS



COUPLER

PART #	DESCRIPTION	LIST
RC60	6" Hub x Hub	27.00
RC80	8" Hub x Hub	30.00
RC100	10" Hub x Hub	41.80
RC120	12" Hub x Hub	44.95



REPAIR COUPLER

PART #	DESCRIPTION	LIST
BE60	6" Gsk x Hub	52.95
BE80	8" Gsk x Hub	76.35
BE100	10" Gsk x Hub	79.05
BE120	12" Gsk x Hub	101.55



END PLUG

PART #	DESCRIPTION	LIST
EP60	6" Spigot	49.65
EP80	8" Spigot	57.05
EP100	10" Spigot	70.90
EP120	12" Spigot	90.70



ELBOW 90°

PART #	DESCRIPTION	LIST
EL60	6" Gsk x Spigot	139.90
EL80	8" Gsk x Spigot	178.35
EL100	10" Gsk x Spigot	242.40
EL120	12" Gsk x Spigot	310.30



ELBOW 45°

PART #	DESCRIPTION	LIST
EL60-45	6" Gsk x Spigot	126.10
EL80-45	8" Gsk x Spigot	150.75
EL100-45	10" Gsk x Spigot	191.15
EL120-45	12" Gsk x Spigot	245.25



ELBOW 22°

PART #	DESCRIPTION	LIST
EL60-22	6" Gsk x Spigot	126.10
EL80-22	8" Gsk x Spigot	150.75
EL100-22	10" Gsk x Spigot	191.15
EL120-22	12" Gsk x Spigot	245.25

* 30° and 11° Same Price



FIELD TEE

PART #	DESCRIPTION	LIST
FT6	6" Gsk x Gsk x Spigot	180.35
FT8	8" Gsk x Gsk x Spigot	226.60
FT10	10" Gsk x Gsk x Spigot	281.65
FT12	12" Gsk x Gsk x Spigot	379.35



LINE TEE

PART #	DESCRIPTION	LIST
LT60	6" Gsk x Spigot x Gsk	180.35
LT80	8" Gsk x Spigot x Gsk	226.60
LT100	10" Gsk x Spigot x Gsk	281.65
LT120	12" Gsk x Spigot x Gsk	379.35



CAP

PART #	DESCRIPTION	LIST
C60	6" Hub	24.20
C80	8" Hub	26.50
C100	10" Hub	39.70
C120	12" Hub	53.00

SURFACE FITTINGS



REDUCER

PART #	DESCRIPTION	LIST
D86	8" Spigot x 6" Gsk	104.10
D108	10" Spigot x 8" Gsk	121.15
D1210	12" Spigot x 10" Gsk	146.75



INCREASER

PART #	DESCRIPTION	LIST
IN68	6" Spigot x 8" Gsk	104.10
IN810	8" Spigot x 10" Gsk	121.15
IN1012	10" Spigot x 12" Gsk	146.75



ADAPTER IPS & PIP

PART #	DESCRIPTION	LIST
SG-IPS6	6" Hub x Gsk	60.15
SG-IPS8	8" Hub x Gsk	86.70
SG-IPS10	10" Hub x Gsk	89.80
SG-IPS12	12" Hub x Gsk	115.30



PVC BUTTERFLY VALVE

PART #	DESCRIPTION	LIST
IV-60	6" Spigot x Gsk	390.00
IV-80	8" Spigot x Gsk	430.00
IV-100	10" Spigot x Gsk	530.00
IV-120	12" Spigot x Gsk	635.00



ALUMINUM BUTTERFLY VALVE

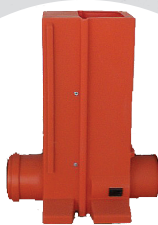
PART #	DESCRIPTION	LIST
IVA-60	6" Spigot x Gsk	351.00
IVA-80	8" Spigot x Gsk	387.00
IVA-100	10" Spigot x Gsk	477.00
IVA-120	12" Spigot x Gsk	571.50



ALSO AVAILABLE IN IPS, PIP, OD, RINGLOCK AND FLANGE OPTIONS. STAINLESS STEEL SLIDES, EXTENSION AND HAND WHEELS.

THE NAVIGATOR®

PART #	DESCRIPTION	LIST
NCV-60	6" Spigot x Gsk	345.00
NCV-80	8" Spigot x Gsk	408.55
NCV-100	10" Spigot x Gsk	495.00
NCV-120	12" Spigot x Gsk	620.00



KBOX

PART #	DESCRIPTION	LIST
SG-KB8	8" G x S	Call
SG-KB10	10" G x S	
SG-KB12	12" G x S	
Place in gated pipe line every 2' of elevation drop for equalized pressure		



GRAVITY VALVES

PART #	DESCRIPTION	LIST
GV-6-OD	6"	Call
GV-8-OD	8"	
GV-10-OD	10"	
GV-12-OD	12"	
15 psi, PIP and IPS Available		



IRRIGATION DAMS

PART #	DESCRIPTION	LIST
40782	48" x 100'	147.20
40790	60" x 100'	189.50
40800	72" x 100'	226.30
40810	84" x 100'	261.25
40820	96" x 100'	298.05
40830	108" x 100'	336.65

NUFLEX SURFACE DITCH



GATED



TRANSFER

NUFLEX SURFACE DITCH

PART #	SIZE	LENGTH	.MIL	CFS	GPM	WEIGHT	LIST
171011	5"	500'	6 MIL	.054	250	19	145.35
171010	5"	1,000'	6 MIL	.054	250	38	257.85
171020	9"	1,320'	5 MIL	1	449	73	329.70
171041	9"	1,320'	7 MIL	1	449	100	443.75
171192	10"	1,000'	10 MIL	1.3	598	95	554.70
171050	12"	1,320'	5 MIL	2	898	98	404.70
171071	12"	1,320'	7 MIL	2	898	135	581.25
171075	12"	1,320'	8 MIL	2	898	150	731.25
171080	15"	1,320'	5 MIL	3	1,347	126	512.50
171101	15"	1,320'	7 MIL	3	1,347	174	704.70
171120	18"	850'	7 MIL	3.8	1,750	135	554.70
171194	18"	600'	10 MIL	3.8	1,750	135	584.40
171140	21"	700'	8 MIL	4.9	2,200	145	618.75
171150	24"	700'	8 MIL	5.9	2,650	166	721.90

• NuFlex Surface Ditch Grade 0.3' per 100' Head 12"



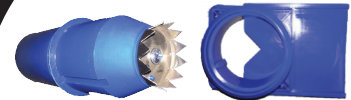
AGRI FLEX GATE

PART #	DESCRIPTION	BOX	LIST
171680	1 1/2"	100	306.25



TWIST A FLOW

PART #	DESCRIPTION	BOX	LIST
171790	TAF Complete	75	409.40
172311	Snap Ring Only	75	39.10



BLUMHARDT TOOL/GATE

PART #	DESCRIPTION	BOX	LIST
120200	2 1/2" Gate	100	704.20
120201	Tool		41.70



AGRI FLEX PUNCH

PART #	SIZE	LIST
171681	1 1/2"	40.65



VICE GRIP CUTTER

PART #	SIZE	LIST
171560	For 3/4" - 1 3/8" Gates(7/8)	57.85
171570	1 3/4" - 2"	65.65



PUNCH

PART #	SIZE	LIST
171510	1/2" - 1"	29.70
171520	1 1/4" - 1 3/8"	37.50
171530	1 3/4" - 2"	37.50

NUFLEX SURFACE DITCH ACCESSORIES



GATES AND CAPS

PART #	SIZE	BOX	LIST
171710	3/4" Gate	100	56.25
171719	1" Gate	100	62.50
171731	Cap for 3/4" and 1"	100	71.90
171841	1 1/4" Gate	100	65.65
171851	1 3/8" Gate	100	67.20
171801	1 1/4" and 1 3/8" Plug	100	75.00
171861	1 3/4" Gate	50	40.65
171809	1 3/4" Plug	50	46.90
171871	2" Gate	50	42.20
171821	2" Plug	50	51.60
171793-100	A-Keeper	100	29.70



COMBINATION PLUG & REDUCER

PART #	DESCRIPTION	BOX	LIST
171699	1/4" Plug, 1/2" & 6/4"	100	88.15
171722	3/4" Plug & 1"	100	106.90



COMPLETE GATE KITS

PART #	DESCRIPTION	BOX	LIST
171741	1 1/4" Gate, Plug A-Keeper	450	510.95
171751	1 3/8" Gate, Plug A-Keeper	450	525.00
171761	1 3/4" Gate, Plug A-Keeper	200	259.40
171771	2" Gate, Plug A-Keeper	200	278.15



FUNNEL INLET

PART #	SIZE	LIST
171200	9"	176.60
171210	12"	214.10
171220	15"	239.10
171250	18"	423.45



TEE STRAP

PART #	SIZE	LIST
171796	9"	8.75
171797	12"	9.85
171798	15"	10.80
171799	18"	12.90



REPAIR PATCH

PART #	DESCRIPTION	LIST
172700	2" x 8'	17.20



NUFLEX EZ PUNCH

PART #	DESCRIPTION	LIST
171545	Punch Tool Handle Only	15.65
171540	Punch(Orange) 3/4" & 1" Gates	28.15
171541	Punch(White) 1 1/4" & 1 3/8" Gates	28.15
171542	Punch(Green) 1 3/4" & 2" Gates	28.15



TEE AND REDUCING TEE

PART #	SIZE	LIST
171300	9"	164.10
171310	12"	189.10
171320	15" x 12"	281.25
171330	18" x 15"	326.60
171340	21" x 18"	407.85



SPLICER

PART #	DESCRIPTION	LIST
171490	9"	65.65
171492	12"	73.45
171494	15"	90.65

INLINE BUBBLE SCREENS



BUBBLE SCREEN LIDS

PART NO.	DESCRIPTION	LIST
BUBSLO-5	5' Bubble Screen Lid Only 12 or 18 mesh	Call
BUBSLO-6	6' Bubble Screen Lid Only 12 or 18 mesh	
BUBSLO-8	8' Bubble Screen Lid Only 12 or 18 mesh	



COMPLETE BUBBLE SCREENS

PART NO.	DESCRIPTION	LIST
BUBTNK-416	4' Tank, 5' Lid, 16" Height 10" or 12" Inlet - 8", 10" or 12" Outlet	Call
BUBTNK-424	4' Tank, 5' Lid, 24" Height 10" or 12" Inlet - 8", 10" or 12" Outlet	
BUBTNK-448	4' Tank, 5' Lid, 48" Height 10" or 12" Inlet - 8", 10" or 12" Outlet	
BUBTNK-536	5' Tank, 6' Lid, 36" Height 10", 12" or 12" Inlet x 15" Up - 8", 10" or 12" Outlet	

- UV RESISTANT AND CORROSION PROOF
- INLET 10" OR 12" SURFACE, BOTTOM INLET AVAILABLE
 - 1 OUTLET STANDARD - 8", 10" OR 12"
 - MULTIPLE OUTLETS AVAILABLE
 - TANK SIZE 4' OR 5' DIAMETER
 - HEIGHT 16", 24", 36" OR 48"
 - LID DIAMETER 5', 6' OR 8'

STAINLESS MESH SCREEN, 12# OR #18

LID AND CULVERT INSTALLATION

