

# 2024 HANDLINE MAINLINE



## HDPE Z-PIPE ASSEMBLY



## HDPE Z-PIPE ASSEMBLY



### HDPE Z-PIPE ASSEMBLY

PART #	SIZE & RISE	LIST
HDSPOOL4BD	4" x 48"	Call
HDSPOOL4BD60	4" x 60"	
HDSPOOL4BD72	4" x 72"	
HDSPOOL6BD	6" x 48"	
HDSPOOL6BD60	6" x 60"	
HDSPOOL6BD72	6" x 72"	
HDSPOOL8BD	8" x 48"	
HDSPOOL8BD60	8" x 60"	
HDSPOOL8BD72	8" x 72"	
HDSPOOL10BD	10" x 48"	
HDSPOOL10BD60	10" x 60"	
HDSPOOL10BD72	10" x 72"	
HDSPOOL12BD	12" x 48"	
HDSPOOL12BD60	12" x 60"	
HDSPOOL12BD72	12" x 72"	



## TUFF-TEE™ UNIVERSAL PVC KEY LOCK COUPLER



- Can be used with Impact Sprinkler
- Can be used with both PVC and metal risers
- Leak-proof operation
- Instantaneous pressurization at startup after initial filling
- Male and Female Riser Attachments
- Easy-Pull spline key
- Made durable with corrosion resistant PVC
- Can be converted and used in connection with aluminum solid set

### TUFF-TEE™ AND COMPONENTS



PART #	DESCRIPTION	LIST
TUFF-TEE3	3" PVC Tuff-Tee for Solid Set	25.50
<b>Add Ons</b>		
TT-NPTRAD	Tuff-Tee Male Riser Adapter	6.12
TT-PULLKEY	Easy-Pull Spline Key	.70
TT-ORING	3" O-Ring (Green)	1.30
TT-RADOR	Riser Adapter O-Ring	.30
<b>Adapters</b>		
TT-MPEND	Aluminum Male Press-On End	14.40
TT-MWEND	Aluminum Male Weld-On End	9.68





### E-Z LATCH™ FITTINGS STEEL



STAINLESS  
STEEL  
SHAFT

#### STEEL VALVE OPENERS

PART #	SIZE	LIST
VOEST4X3	4" x 3"	98.65
VOEST4X4	4" x 4"	101.27



STAINLESS  
STEEL  
SHAFT

#### STEEL VALVE OPENING TEES

PART #	SIZE	LIST
VOEST4X3X3	4" x 3" x 3"	107.38
VOEST4X4X4	4" x 4" x 4"	113.49



#### LINE TEE

PART #	SIZE	LIST
SRA3-RUNT	3"	72.56
SRA4-RUNT	4"	94.00



#### 90° ELBOW

PART #	SIZE	LIST
SEA3-90	3"	57.04
SEA4-90	4"	72.20



#### 45° ELBOW AND 22°

PART #	SIZE	LIST
SEA3-22	3" 22°	54.50
SEA3-45	3" 45°	54.50
SEA4-22	4" 22°	70.80
SEA4-45	4" 45°	70.80



#### END TEE

PART #	SIZE	LIST
SRA3-ENDT	3"	74.80
SRA4-ENDT	4"	94.00



#### HOSE ENDS

PART #	SIZE	LIST
MHLHE3	3" Male	22.48
MHLHE4	4" Male	37.60
FHLHE3	3" Female	22.48
FHLHE4	4" Female	37.60



#### REPAIR SLEEVES

PART #	SIZE	LIST
PRSL3	3" x 7"	9.70
PRSL4	4" x 10"	15.00
PRSL5	5" x 10"	18.20



#### CENTER RISER OUTLET

PART #	SIZE	LIST
3CRS	3" x 1" Outlet	15.80
3CRST	Top Only	9.60
3FT	Foot Only	3.20
109-03	Gasket	.65



### E-Z LATCH™ FITTINGS ALUMINUM



#### ALUMINUM VALVE OPENERS

PART #	SIZE	LIST
902-43	4" x 3"	104.28
902-44	4" x 4"	106.70
902-43-W	w/Wheel	121.50
902-44-W	w/Wheel	124.50
902-433	4" x 3" x 3"	116.75
902-433-W	w/Wheel	132.00
902-444	4" x 4" x 4"	123.50
902-444-W	w/Wheel	137.75



#### HIGH FLOW VALVE OPENERS

PART #	SIZE	LIST
VOEH4X3	4" x 3"	109.61
VOEH4X4	4" x 4"	119.31
VOEH4X3-W		128.00
VOEH4X4-W		139.00
VOEH4X3X3	3" Tee	116.00
VOEH4X4X4	4" Tee	130.00
VOEH4X3X3-W		131.00
VOEH4X4X4-W		145.00



#### END PLUGS

PART #	SIZE	LIST
EP3-X	3" Aluminum	15.13
Steel End Plugs		
EPS3	3"	18.33
EPS4	4"	23.80
EP3OUT-.75	3" x 3/4" FPT	24.80
EP3OUT-1	3" x 1" FPT	24.80
EP3OUT-1.5	3" x 1 1/2" FPT	24.80
GCHA	3" x 2" FPT	24.80



#### 90° ELBOW

PART #	SIZE	LIST
AEA3-90	3"	57.04



#### LINE TEE

PART #	SIZE	LIST
ARA3-RUNT	3"	72.64



#### END TEE

PART #	SIZE	LIST
ARA3-ENDT	3"	72.56



#### HANDLINE PRESS-IN COUPLER

PART #	SIZE	LIST
HLPE3	3" w/ 3/4" Outlet	25.10
BL3-ASSY	3" Band and Latch	13.90



#### HANDLINE WELD ON COUPLER

PART #	SIZE	LIST
HLWO3	3" x 3/4" Outlet	20.42
HLLP3	3" Weld On Latch Pad	11.50



#### RISER VALVE STUBS

PART #	SIZE	LIST
V43AT	4" x 3" Plated Stem	37.83
V44AT	4" X 4" Plated Stem	41.32
ALVX43	4" x 3" Stainless Stem	41.71
ALVX44	4" x 4" Stainless Stem	45.20

\* COMPONENTS SEE PAGE



### STEEL ROUND BACK HANDLINE FITTINGS



#### HANDLINE PRESS IN COUPLER

PART #	SIZE	LIST
104-20	2" No Outlet	39.75
104-30	3" No Outlet	40.65
104-40	4" No Outlet	54.95

#### HANDLINE PRESS IN COUPLER

PART #	SIZE	LIST
106-20	2" x 3/4" Outlet	39.65
106-30	3" x 3/4" Outlet	34.70
106-40	4" x 3/4" Outlet	58.30

#### HANDLINE PRESS IN COUPLER

PART #	SIZE	LIST
105-20	2" x 1" Outlet	41.95
105-30	3" x 1" Outlet	36.60
105-40	4" x 1" Outlet	60.45



#### PRESS IN COUPLER

PART #	SIZE	LIST
110-20	2"	30.25
110-30	3"	32.50
110-40	4"	44.65
110-50	5"	57.30
110-60	6"	68.15

#### BAND AND LATCH ASSEMBLY

PART #	SIZE	LIST
103-20	2"	13.60
103-30	3"	14.35
103-40	4"	16.30
103-50	5"	22.65
103-60	6"	26.30

#### INCREASER

PART #	SIZE	LIST
115-23	2" M x 3" F	90.70
115-34	3" M x 4" F	116.30
115-45	4" M x 5" F	140.80
115-46	4" M x 6" F	179.75
115-56	5" M x 6" F	180.40



#### REDUCER

PART #	SIZE	LIST
115-32	3" M x 2" F	90.70
115-43	4" M x 3" F	116.30
115-54	5" M x 4" F	140.80
115-64	6" M x 4" F	179.75
115-65	6" M x 5" F	180.40

#### PRESS IN VALVE TEE

PART #	SIZE	LIST
111-33	3" x 3" VLV	176.10
111-43	4" x 3" VLV	189.15
111-44	4" x 4" VLV	195.75
111-54	5" x 4" VLV	214.65
111-64	6" x 4" VLV	234.70

#### IN LINE VALVE TEE

PART #	SIZE	LIST
112-33	3" x 3" VLV	216.40
112-43	4" x 3" VLV	224.70
112-44	4" x 4" VLV	254.85
112-54	5" x 4" VLV	307.70
112-64	6" x 4" VLV	332.15



### STEEL ROUND BACK HANDLINE FITTINGS



**MALE HOSE ADAPTER**

PART #	SIZE	LIST
627-20	2"	51.75
627-30	3"	39.50
627-40	4"	50.80
627-60	6"	124.70



**FEMALE HOSE ADAPTER**

PART #	SIZE	LIST
627-20F	2"	45.95
627-30F	3"	47.20
627-40F	4"	55.40
627-60F	6"	103.70



**END TEE**

PART #	SIZE	LIST
ET2	2" End Tee	138.40
ET3	3" End Tee	152.65
ET4	4" End Tee	197.30
ET6	6" End Tee	309.40



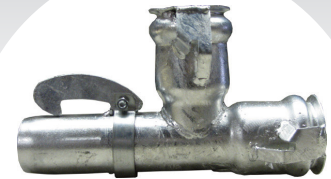
**90° ELBOW**

PART #	SIZE	LIST
EL2	2" 90° Elbow	122.80
EL3	3" 90° Elbow	115.50
EL4	4" 90° Elbow	163.15
EL5	5" 90° Elbow	224.85
EL6	6" 90° Elbow	258.25



**45° ELBOW AND 22°**

PART #	SIZE	LIST
EL2-45	2" 45° Elbow	110.10
EL3-45	3" 45° Elbow	123.85
EL4-45	4" 45° Elbow	162.35
EL5-45	5" 45° Elbow	207.75
EL6-45	6" 45° Elbow	254.20



**LINE TEE**

PART #	SIZE	LIST
LT2	2" Line Tee	138.40
LT3	3" Line Tee	145.00
LT4	4" Line Tee	187.40
LT5	5" Line Tee	269.95
LT6	6" Line Tee	309.40



**THREADED ADAPTER**

PART #	SIZE	LIST
125-20	2" MPT x 2" F	66.10
125-23	2" MPT x 3" F	91.65
125-30	3" MPT x 3" F	106.10
125-34	3" MPT x 4" F	141.85
125-44	4" MPT x 4" F	138.35
125-64	4" MPT x 6" F	221.65



**END PLUG**

PART #	SIZE	LIST
EPS2	2"	40.95
EPS3	3"	18.90
EPS4	4"	23.80
EPS5	5"	72.75
EPS6	6"	82.10
EPS8	8"	128.70



**VALVE OPENING ELBOWS/TEES**

PART #	RL/RLF	LIST
903-33	3" x 3"	226.95
903-43	4" x 3"	135.75
903-44	4" x 4"	178.95
903-66	6" x 6"	335.60
903-433	4" x 3" x 3"	273.40
903-444	4" x 4" x 4"	310.50



### STEEL CROWN AM HANDLINE FITTINGS



#### HANDLINE PRESS IN COUPLER

PART #	SIZE	LIST
104-20CR	2" No Outlet	39.75
104-30CR	3" No Outlet	40.65
104-40CR	4" No Outlet	54.95

#### HANDLINE PRESS IN COUPLER

PART #	SIZE	LIST
106-20CR	2" x 3/4" Outlet	39.65
106-30CR	3" x 3/4" Outlet	64.70
106-40CR	4" x 3/4" Outlet	58.30

#### HANDLINE PRESS IN COUPLER

PART #	SIZE	LIST
105-20CR	2" x 1" Outlet	41.95
105-30CR	3" x 1" Outlet	36.60
105-40CR	4" x 1" Outlet	60.45



#### MAINLINE PRESS IN COUPLER

PART #	SIZE	LIST
110-20CR	2"	30.25
110-30CR	3"	32.50
110-40CR	4"	44.65
110-50CR	5"	57.30
110-60CR	6"	68.15

#### BAND AND LATCH ASSEMBLY

PART #	SIZE	LIST
103-20CR	2"	13.60
103-30CR	3"	14.35
103-40CR	4"	16.30
103-50CR	5"	22.65
103-60CR	6"	26.30

#### INCREASER

PART #	SIZE	LIST
115-23CR	2" M x 3" F	90.70
115-34CR	3" M x 4" F	116.30
115-45CR	4" M x 5" F	140.80
115-46CR	4" M x 6" F	179.75
115-56CR	5" M x 6" F	180.40



#### REDUCER

PART #	SIZE	LIST
115-32CR	3" M x 2" F	90.70
115-43CR	4" M x 3" F	116.30
115-54CR	5" M x 4" F	140.80
115-64CR	6" M x 4" F	179.75

#### PRESS IN VALVE TEE

PART #	SIZE	LIST
111-43CR	4" x 3"	189.15
111-44CR	4" x 4"	195.75
111-54CR	5" x 4"	214.65
111-64CR	6" x 4"	234.70

#### IN LINE VALVE TEE

PART #	SIZE	LIST
112-43CR	4" x 3"	224.70
112-44CR	4" x 4"	254.85
112-54CR	5" x 4"	307.70
112-64CR	6" x 4"	332.15



### STEEL CROWN AM HANDLINE FITTINGS



#### MALE HOSE ADAPTER

PART #	SIZE	LIST
627-20CR	2"	51.75
627-30CR	3"	59.90
627-40CR	4"	66.45
627-60CR	6"	124.70



#### FEMALE HOSE ADAPTER

PART #	SIZE	LIST
627-20FCR	2"	45.95
627-30FCR	3"	53.40
627-40FCR	4"	61.35
627-60FCR	6"	103.70



#### END TEE

PART #	SIZE	LIST
ET2CR	2" End Tee	138.40
ET3CR	3" End Tee	165.30
ET4CR	4" End Tee	201.55
ET6CR	6" End Tee	309.40



#### 90° ELBOW

PART #	SIZE	LIST
EL2CR	2" 90° Elbow	122.80
EL3CR	3" 90° Elbow	125.80
EL4CR	4" 90° Elbow	175.45
EL6CR	6" 90° Elbow	258.25



#### 45° ELBOW AND 22°

PART #	SIZE	LIST
EL2-45CR	2" 45° Elbow	110.10
EL3-45CR	3" 45° Elbow	123.85
EL4-45CR	4" 45° Elbow	162.35
EL6-45CR	6" 45° Elbow	254.20



#### LINE TEE

PART #	SIZE	LIST
LT2CR	2" Line Tee	138.40
LT3CR	3" Line Tee	165.30
LT4CR	4" Line Tee	201.55
LT6CR	6" Line Tee	309.40



#### THREADED ADAPTER

PART #	SIZE	LIST
125-20CR	2" MPT x 2" F	66.10
125-23CR	2" MPT x 3" F	91.65
125-30CR	3" MPT x 3" F	106.10
125-34CR	3" MPT x 4" F	141.85
125-44CR	4" MPT x 4" F	138.35



#### END PLUG

PART #	SIZE	LIST
EPS2CR	2"	40.95
EPS3CR	3"	40.50
EPS4CR	4"	49.15
EPS5CR	5"	72.75
EPS6CR	6"	82.10



#### VALVE OPENING ELBOWS

PART #	RL/CRF	LIST
903-43CR	4" x 3"	219.50
903-44CR	4" x 4"	235.35
903-64CR	6" x 4"	294.35
903-433CR	4" x 3" x 3"	273.40
903-444CR	4" x 4" x 4"	310.50

## MCFISCHER™ HANDLINE FITTINGS (MCDOWELL)



### MCFISCHER™ PRESS IN MALE

PART #	SIZE	LIST
MC3MC	3"	22.50
MC4MC	4"	25.00

### MCFISCHER™ PRESS IN FEMALE

PART #	SIZE	LIST
MC3FCP	3"	43.00
MC4FCP	4"	46.70
MC3FCPO	3" w/ 1" Outlet	50.00
MC4FCPO	4" w/ 1" Outlet	93.25

### MCFISCHER™ GASKET & SPRING

PART #	SIZE	LIST
405-30	3" Drain Gasket	5.50
405-40	4" Drain Gasket	6.35
406-30	3" Spring	5.00
406-40	4" Spring	7.00



### MCFISCHER™ VALVE OPENERS

PART #	SIZE	LIST
MC43VOE	4" x 3"	252.70
MC44VOE	4" x 4"	268.85
MC433VOT	4" x 3" x 3"	300.00
MC444VOT	4" x 4" x 4"	330.00

### MCFISCHER™ ELBOWS

PART #	SIZE	LIST
MC3L90	3" 90°	193.55
MC4L90	4" 90°	204.30
MC3L45	3" 45°	172.05
MC4L45	4" 45°	204.30

### HOSE ADAPTERS

PART #	SIZE	LIST
MC3MHA	3" M x 3" Hose	57.15
MC3FHA	3" F x 3" Hose	60.00
MC4MHA	4" M x 4" Hose	63.35
MC4FHA	4" F x 4" Hose	64.55



### MCFISCHER™ END PLUG

PART #	SIZE	LIST
MC3EPV	3"	40.00
MC4EPV	4"	46.00
108-11	Air Vent Valve	8.25
915-55	5/8" Nut	40.00
915-56	3/4" Nut	40.00

### MCFISCHER™ LINE TEE

PART #	SIZE	LIST
MC3LT	3"	231.20
MC4LT	4"	236.55

### MCFISCHER™ END TEE

PART #	SIZE	LIST
MC3ET	3"	231.20
MC4ET	4"	235.55
MC43R	4" x 3" Reducer	115.00

## AMES ABC HANDLINE FITTINGS (BALL AND SOCKET)



**PRESS IN COUPLERS**

PART #	SIZE	LIST
ABC2FCP	2"	44.95
ABC3FCP	3"	75.75
ABC4FCP	4"	109.75
ABC2FCPO	2" x 3/4" Outlet	58.20
ABC3FCPO	3" x 1" Outlet	94.40
ABC4FCPO	4" x 1" Outlet	134.70



**PRESS IN FEMALE**

PART #	SIZE	LIST
ABC2FC	2"	42.90
ABC3FC	3"	74.10
ABC4FC	4"	108.60
ABC5FC	5"	132.85
ABC6FC	6"	182.85
ABC8FC	8"	294.95



**PRESS IN MALE**

PART #	SIZE	LIST
ABC2MC	2"	36.80
ABC3MC	3"	50.50
ABC4MC	4"	60.50
ABC5MC	5"	104.95
ABC6MC	6"	129.90
ABC8MC	8"	243.10



**VALVE OPENING ELBOWS**

PART #	SIZE	LIST
ABC32VOE	3" x 2"	367.25
ABC43VOE	4" x 3"	386.95
ABC44VOE	4" x 4"	391.75
ABC433VOE	4" x 3" x 3"	468.95
ABC444VOE	4" x 4" x 4"	517.40



**90° ELBOW - 45° ELBOW**

PART #	SIZE	LIST
ABC2L90	2" 90°	139.70
ABC3L90	3" 90°	232.50
ABC4L90	4" 90°	277.55
ABC2L45	2" 45°	140.85
ABC3L45	3" 45°	179.75
ABC4L45	4" 45°	240.75



**HOSE ADAPTER & REDUCER**

PART #	SIZE	LIST
ABC3MHA	3" M x Hose	115.20
ABC4MHA	4" M x Hose	131.45
ABC3FHA	3" F x Hose	165.20
ABC4FHA	4" F x Hose	191.95
ABC32R	3" M x 2" F Red.	100.50
ABC43R	4" M x 3" F Red.	190.20



**END PLUG**

PART #	SIZE	LIST
ABC2EP	2"	51.50
ABC3EP	3"	74.35
ABC4EP	4"	104.75



**LINE TEE**

PART #	SIZE	LIST
ABC2LT	2"	174.20
ABC3LT	3"	287.35
ABC4LT	4"	326.80



**END TEE**

PART #	SIZE	LIST
ABC2ET	2"	174.20
ABC3ET	3"	287.35
ABC4ET	4"	326.80

## HYDRANTS



710095



711293



### ALUMINUM VALVE STUBS

PART #	SIZE	LIST
V43AT	4" x 3" Plated Stem	39.00
V44AT	4" X 4" Plated Stem	42.60
ALVX43	4" x 3" Stainless Stem	43.00
ALVX44	4" x 4" Stainless Stem	46.60

### ALUMINUM WELD ON

PART #	SIZE	LIST
710095	4" RL x 6" Length	
711293	4" RL x 6" Saddle	
711294	4" RL x 8" Saddle	
711291	4" RL x 10" Saddle	
711292	4" RL x 12" Saddle	

### WADE ALUMINUM HYDRANTS

PART #	SIZE	LIST
V43ART	4" x 3" Wade 7-4UT	94.65
V44ART	4" x 4" Wade 7-4UF	108.70
7-4PF	4" x 4" "P" Series	114.40
7-4PT	4" x 3" "P" Series	99.65



### STEEL THREADED VALVE STUBS

PART #	SIZE	LIST
V32ST	3" VLV x 2" FPT	107.45
V33ST	3" VLV x 3" FPT	121.70
V43ST	4" VLV x 3" FPT	129.95
V44ST	4" VLV x 4" FPT	157.95
V55ST	5" VLV x 5" FPT	297.70
V66ST	6" VLV x 6" FPT	327.20
V88ST	8" VLV x 8" FPT	623.15

### STEEL WELD ON VALVE STUBS

PART #	SIZE	LIST
V36SW	3" VLV x 6" Length	60.95
V46SW	4" VLV x 6" Length	68.20
V56SW	5" VLV x 6" Length	102.45
V66SW	6" VLV x 6" Length	111.30
V88SW	8" VLV x 8" Length	320.55

### STEEL MALE THREAD VALVES

PART #	SIZE	LIST
V32SMT	3" VLV x 2" MPT	117.20
V33SMT	3" VLV x 3" MPT	116.80
V43SMT	4" VLV x 3" MPT	128.70
V44SMT	4" VLV x 4" MPT	144.40
V55SMT	5" VLV x 5" MPT	234.90
V66SMT	6" VLV x 6" MPT	268.70
V88SMT	8" VLV x 8" MPT	618.80



### VALVE STEM DISC ASSEMBLY

PART #	SIZE	LIST
VSDA3	3" Flat Disc Assembly	47.85
VSDA4	4" Flat Disc Assembly	53.90
VSDA5	3" Flat Disc Assembly	87.30
VSDA6	6" Flat Disc Assembly	86.80
VSDA8	8" Flat Disc Assembly	200.65

### VALVE STEM DISC ASSEMBLY

PART #	SIZE	LIST
DDSA3	3" Domed Disc Assembly	47.85
DDSA4	4" Domed Disc Assembly	53.90
DDSA5	5" Domed Disc Assembly	87.30
DDSA6	6" Domed Disc Assembly	86.80

### REPAIR VALVE RINGLOCK

PART #	SIZE	LIST
VRRL33	3" VLV x 3" RLF	103.35
VRRL44	4" VLV x 4" RLF	128.95
VRRL66	6" VLV x 6" RLF	188.10

## HYDRANTS PARTS AND REPAIR



### DOMED UNIV. VALVE STUB DISC

PART #	SIZE	LIST
915-02	3"	7.30
915-03	4"	3.50
915-03D	4" Made in USA	
915-13-5	5"	
915-13-6	6"	
915-13-8	8"	92.25
915-25	5/8" Disc Protector	



### FLAT VALVE STUB DISC

PART #	SIZE	LIST
915-19	3" (Gheen)(RR)(RW)	19.55
915-20	4" (Gheen)(RW)	25.70
915-61	5" x 5/8" (Gheen)	35.35
915-60	6" x 3/4" (Gheen)	35.80
915-80	8" x 1" (Gheen)	106.65
915-21	4" Redi Rain Flat	15.00
915-54	4" x 3/4" Hole	28.60



### MISC. VALVE STUB DISCS

PART #	SIZE	LIST
915-06	4" Wade Type	9.70
915-22	4" Felton Domed	2.40
<b>Steel Top - Rubber Bottom</b>		
915-23	4" Universal Domed	8.70
915-24	4" Felton Domed	9.70



### PLATED RISER VALVE STEMS

PART #	SIZE	LIST
915-09	5/8" x 6 3/4" Plated	4.23
915-09D	Plated Made USA	
915-11	5/8" x 9" Plated	6.21
915-10	3/4" x 9" Plated	27.30
915-1A-8	1" x 11" Plated	80.85



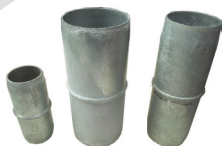
### BRASS AND STAINLESS STEMS

PART #	SIZE	LIST
915-07	5/8" x 6 3/4" Brass	28.60
915-08	5/8" x 9" Brass	34.15
915-12	5/8" x 6 3/4" Stainless	8.58
915-12-D	Stainless Made in USA	
UNVSTS9	5/8" x 9" Stainless	9.90



### 8 TPI RISER VALVE STEMS

PART #	SIZE	LIST
<b>8 TPI Stems</b>		
915-46	Shur Rane Plated	7.00
915-46B	Shur Rane Brass	18.00
915-47	5" Redi Rain Hex Brass	18.00
915-48	S.S. Felton/Shur Rane	50.10



### REPAIR SLEEVES

PART #	SIZE	LIST
102-30	3" x 8"	13.35
102-40	4" x 11 3/8"	17.85
102-50	5" x 11 3/8"	21.35
102-60	6" x 11 3/8"	42.20
102-80	8" x 11 3/8"	68.95
102-100	10" x 11 3/8"	99.25



### HOLD BAND ALUMINUM

PART #	SIZE	LIST
124-30	3"	1.70
124-40	4"	3.55
124-50	5"	3.75
124-60	6"	7.50
124-80	8"	11.20
124-100	10"	19.95



### PRESSING PAINT & CATALYST

PART #	SIZE	LIST
888	BAFSCO™ Paint	24.00
889	BAFSCO™ Catalyst	10.75

24 oz Pressing Paint cans, 12 per case

8 oz Catalyst cans, 24 per case

Mix Ratio 3:1, Paint:Catalyst

### VALVE OPENING ELBOWS AND PARTS



#### FELTON VALVE OPENER

PART #	SIZE	LIST
904-43	4" x 3" Felco	257.95
904-44	4" x 4" Felco	270.00
904-433	4" x 3" x 3" Tee	325.00
914-23	5/8" Felco Hand Wheel	40.65
914-18	5/8" Felco Stem Shield	8.75
914-63	4" Felton VOE Clamp(1630-1)	96.65



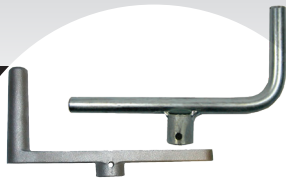
#### REDI RAIN VALVE OPENER

PART #	SIZE	LIST
905-43	4" x 3" Redi Rain	243.10
905-44	4" x 4" Redi Rain	249.30
914-53	VOE Clamp	35.10
914-55	Packing Nut	23.00



#### WAIDE VALVE OPENERS

PART #	SIZE	LIST
3-6-3EH	4" x 3" Knob	288.00
3-6-3EHPH	4" x 3" Hook	288.00
3-6-3U	4" RL x 3" Knob	269.20
3-6-3UEH	4" RL x 3" Hook	269.20
3-6-4EH	4" x 4" Knob	288.00
3-6-4EHPH	4" x 4" Hook	288.00



#### HANDLES

PART #	SIZE	LIST
914-19	5/8" Steel	10.25
914-20	3/4" Steel	6.20
914-21	5/8" Aluminum	17.45
914-22	3/4" Aluminum	16.50
VOEWHL58	5/8" Hand Wheel	15.30
VOEWHL34	3/4" Hand Wheel	15.30



#### PACKING NUTS AND BUSHINGS

PART #	SIZE	LIST
914-28	A & M 33 Bearing	11.75
914-37	3/4" Stem Washer Y	1.00
914-38	5/8" Stem Washer Y	1.00
914-39	Rainway Packing Nut	13.15
914-40	Waide Bushing (10-3-265B)	34.40



#### VOE CLAMPS & PARTS

PART #	SIZE	LIST
914-51	4" Universal Ring Lock	14.30
914-52	Bail Spring	5.25
914-56	Quick Release Clamp	50.95
914-57	Quick Release Hook	14.15



#### VOE GASKETS

PART #	SIZE	LIST
914-01	5/8" Universal	1.25
914-02	3/4" Universal	1.25
914-10	1" Universal	2.00
914-03	3/4" Gheen Type	1.80
914-04	5/8" Gheen Type	1.80



#### SHAFTS & STEMS

PART #	SIZE	LIST
914-26	5/8" x 10" Zinc Shaft	5.50
914-24	5/8" x 8" Stainless	12.85
914-27	3/4" x 10" Zinc Shaft	11.25
914-44	5/8" Stem & Yoke	7.60
914-45	3/4" Stem & Yoke	8.45
914-60	5/8" Stem w/ Taco Clutch	4.70
914-61	3/4" Stem w/ Taco Clutch	5.80
10-3-27S	Waide Outward	53.10



#### YOKES

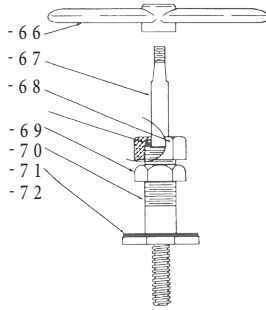
PART #	SIZE	LIST
914-30	5/8" Brass	10.70
914-31	3/4" Brass	11.30
914-32	5/8" & 3/4" Brass	13.20
914-33	5/8" Steel	4.43
914-34	3/4" Steel	4.70
914-35	Felton Yoke	21.95
914-62	Weld On Taco Clutch	1.35
914-36	5/8" Redi Rain Hex Combo Yoke	12.00

### VOE AND VALVE STUB PARTS



#### IRECO VALVE OPENING ELBOW

PART #	SIZE	LIST
907-43	4" x 3"	295.85
907-44	4" x 4"	314.60



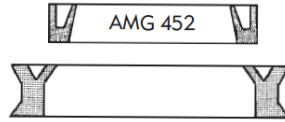
#### IRECO PUSH DOWN VOE

PART #	SIZE	LIST
914-66	Top Handle	38.65
914-67	Stem	31.25
914-68	1 1/8" Packing Nut	25.00
914-69	Packing Ring	1.90
914-70	1 1/8" Jam Nut	6.60
914-71	Brass Stem Guide	94.40
914-72	Gasket	3.15
914-73	Complete Assembly	202.10



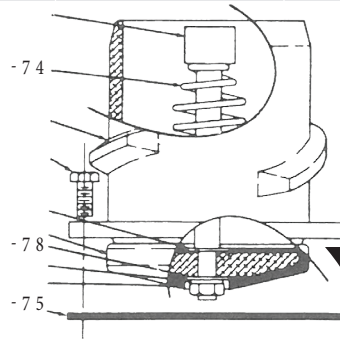
#### ROLL PINS AND COTTER PINS

PART #	SIZE	LIST
914-46	2" Cotter Pin	1.00
914-47	3/16" x 1 1/4" Roll Pin	.40
914-48	1/4" x 1 1/4" Roll Pin	.45
914-49	1/4" Bolt w/Nylock Nut	.85
914-50	SS Pin w/ Cotter	4.10



#### VOE BODY GASKETS MISC.

PART #	SIZE	LIST
914-12	4" Western "41"	2.70
914-13	4 1/2" Western "31"	4.55
914-15	4" McDowell	4.50



#### IRECO VALVE PARTS

PART #	SIZE	LIST
914-74	4" Valve Spring	5.55
914-75	4" Valve Gasket	6.15
914-78	Valve Disc	19.50
914-80	Complete Assembly	131.25
NF-288-44	4" FPT Valve Top	194.40
NF-288-34	3" FPT Valve Top	185.45
NM-288-44	4" MPT Valve Top	174.50
NM-288-34	3" MPT Valve Top	206.45



#### ALUM WELD ON SADDLE

PART #	SIZE	LIST
710096	4" x 6" Weld on Saddle	
710097	4" x 8" Weld on Saddle	
710098	4" x 10" Weld on Saddle	
710098	4" x 12" Weld on Saddle	



#### RAINWAY STEM PACKING

PART #	SIZE	LIST
914-17	1/4" x 7"	3.75



#### VOE STEM GASKETS

PART #	SIZE	LIST
914-05	Split Packing Ring	1.50
914-07	3/4" Moore Rane	2.50
914-08	1/2" Moore Rane Cub	2.50
914-09	3/4" O-Ring (Old Style Lake & Wade)	1.00
914-14	5/8" Ames SBS	4.65
914-16	5/8" O.S. SBS O-Ring	1.00

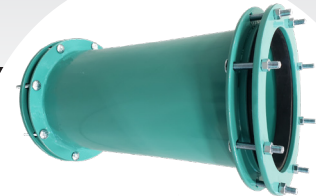
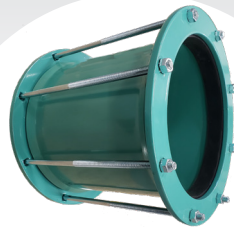


#### REPLACEMENT SPIDERS

PART #	SIZE	LIST
915-15	3"	25.25
915-16	4" Standard	15.60
915-17	4" Heavy Duty	15.60
915-18	4" w/ Removeable Nut	15.60
915-26	4" Concave Spider	32.25
915-50	4" Wade Type Brass	12.40
915-58	Moore Rane Type	67.30
915-59	Gasket for Moore Rane	2.20



### WATER TIGHT COUPLERS



#### STARTER COUPLER WELD ON

PART #	SIZE X LENGTH	LIST
279-30IPS	3" IPS x 9"	88.75
279-40IPS	4" IPS x 9"	98.45
279-50IPS	5" IPS x 9"	109.50
279-60IPS	6" IPS x 9"	129.95
279-60PIP	6" IPS/GTG x 9"	129.95
279-80IPS	8" IPS x 9"	162.70
279-80PIP	8" IPS/GTG x 9"	162.70
279-100IPS	10" IPS x 9"	198.15
279-100PIP	10" IPS/GTG x 9"	198.15
279-120IPS	12" IPS x 9"	296.70
279-120PIP	12" IPS/GTG x 9"	296.70
279-150PIP	15.3" PIP x 9"	368.45
279-180PIP	18.7" PIP x 9"	493.15
279-210PIP	22.047" PIP x 12"	998.60
279-240PIP	24.803" PIP x 12"	1,229.95
279-270PIP	27.953" PIP x 12"	1,516.80
<b>Galvanized</b>		
7042GFP-3IPS	3" IPS x 9"	88.75
7042GFP-4IPS	4" IPS x 9"	98.45
7042GFP-5IPS	5" IPS x 9"	109.50
7042GFP-6IPS	6" IPS x 9"	129.95
7042GFP-6PIP	6" IPS/GTG x 9"	129.95
7042GFP-8IPS	8" IPS x 9"	162.70
7042GFP-8PIP	8" IPS/GTG x 9"	162.70
7042GFP-10IPS	10" IPS x 9"	198.15
7042GFP-10PIP	10" IPS/GTG x 9"	198.15
7042GFP-12IPS	12" IPS x 9"	296.70
7042GFP-12PIP	12" IPS/GTG x 9"	296.70
7042GFP-15PIP	15.3" PIP x 9"	368.45
7042G-18PIP	18.7" PIP x 9"	493.15

#### MEDIUM REPAIR COUPLER

PART #	SIZE X LENGTH	LIST
235-30IPS	3" IPS x 10"	104.95
235-40IPS	4" IPS x 10"	120.40
235-50IPS	5" IPS x 10"	138.95
235-60IPS	6" IPS x 10"	157.95
235-60PIP	6" IPS/GTG x 10"	157.95
235-80IPS	8" IPS x 10"	191.95
235-80PIP	8" IPS/GTG x 10"	191.95
235-100IPS	10" IPS x 10"	243.85
235-100PIP	10" IPS/GTG x 10"	243.85
235-120IPS	12" IPS x 10"	328.15
235-120PIP	12" IPS/GTG x 10"	328.15
235-150PIP	15.3" PIP x 10"	404.35
<b>Galvanized</b>		
7035GFP-3IPS	3" IPS x 10"	104.95
7035GFP-4IPS	4" IPS x 10"	120.40
7035GFP-5IPS	5" IPS x 10"	138.95
7035GFP-6IPS	6" IPS x 10"	157.95
7035GFP-6PIP	6" IPS/GTG x 10"	157.95
7035GFP-8IPS	8" IPS x 10"	191.95
7035GFP-8PIP	8" IPS/GTG x 10"	191.95
7035GFP-10IPS	10" IPS x 10"	243.85
7035GFP-10PIP	10" IPS/GTG x 10"	243.85
7035GFP-12IPS	12" IPS x 10"	328.15
7035GFP-12PIP	12" IPS/GTG x 10"	328.15
7035GFP-15PIP	15.3" PIP x 10"	404.35

#### LONG BOLT ON REPAIR COUPLER

PART #	SIZE X LENGTH	LIST
240-30IPS	3" IPS x 16"	177.75
240-40IPS	4" IPS x 16"	196.75
240-50IPS	5" IPS x 16"	218.85
240-60IPS	6" IPS x 17"	260.10
240-60PIP	6" IPS/GTG x 17"	260.10
240-80IPS	8" IPS x 18"	325.35
240-80PIP	8" IPS/GTG x 18"	325.35
240-100IPS	10" IPS x 18"	396.75
240-100PIP	10" IPS/GTG x 18"	396.75
240-120IPS	12" IPS x 18"	562.35
240-120PIP	12" IPS/GTG x 18"	562.35
240-150PIP	15.3" PIP x 18"	692.95
240-180PIP	18.7" PIP x 18"	985.40
240-210PIP	22.047" PIP x 24"	1,499.75
240-240PIP	24.803" PIP x 24"	1,851.50
240-270PIP	27.953" PIP x 24"	2,283.25
<b>Galvanized</b>		
7040GFP-4IPS	4" IPS x 16"	196.75
7040GFP-6IPS	6" IPS x 17"	260.10
7040GFP-6PIP	6" IPS/GTG x 17"	260.10
7040GFP-8IPS	8" IPS x 18"	325.35
7040GFP-8PIP	8" IPS/GTG x 18"	325.35
7040GFP-10IPS	10" IPS x 18"	396.75
7040GFP-10PIP	10" IPS/GTG x 18"	396.75
7040GFP-12IPS	12" IPS x 18"	562.35
7040GFP-12PIP	12" IPS/GTG x 18"	562.35
7040G-150PIP	15.3" PIP x 18"	692.95
7040G-180PIP	18.7" PIP x 18"	985.40
7040G-210PIP	22.047" PIP x 24"	1,499.75
7040G-240PIP	24.803" PIP x 24"	1,851.50



### WATER TIGHT



#### 90° ELBOW

#### 45° ELBOW

#### TEE

PART #	SIZE	LIST
280-30	3" IPS	255.45
280-40	4" IPS	285.60
280-60	6" IPS/GTG	363.55
280-80	8" IPS/GTG	440.85
280-100	10" IPS/GTG	530.60
280-120	12" IPS/GTG	801.65
280-150	15.3" PIP	1,071.45
280-180	18.7" PIP	1,448.95
280-210	22.047" PIP	2,068.95
280-240	24.803" PIP	2,633.75
280-270	27.953" PIP	2,865.10

PART #	SIZE	LIST
281-30	3" IPS	215.65
281-40	4" IPS	226.25
281-60	6" IPS/GTG	316.50
281-80	8" IPS/GTG	380.60
281-100	10" IPS/GTG	464.95
281-120	12" IPS/GTG	733.55
281-150	15.3" PIP	870.90
281-180	18.7" PIP	1,343.25
281-210	22.047" PIP	1,658.90
281-240	24.803" PIP	2,250.15
281-270	27.953" PIP	2,663.75

PART #	SIZE	LIST
282-30	3" IPS	303.90
282-40	4" IPS	339.75
282-60	6" IPS/GTG	428.85
282-80	8" IPS/GTG	530.60
282-100	10" IPS/GTG	655.95
282-120	12" IPS/GTG	1,039.70
282-150	15.3" PIP	1,388.95
282-180	18.7" PIP	1,857.50
282-210	22.047" PIP	3,211.30
282-240	24.803" PIP	4,371.40
282-270	27.953" PIP	5,925.30



#### CROSS

#### SERVICE TEE

#### TEE RISER

PART #	SIZE	LIST
283-30	3" IPS	395.60
283-40	4" IPS	446.35
283-50	5" IPS	483.40
283-60	6" IPS/GTG	570.85
283-80	8" IPS/GTG	707.35
283-100	10" IPS/GTG	881.95
283-120	12" IPS/GTG	1,384.50
283-150	15.3" PIP	1,643.60
283-180	18.7" PIP	2,484.40
283-210	22.047" PIP	4,210.65
283-240	24.803" PIP	5,345.75
283-270	27.953" PIP	7,533.65

PART #	SIZE	LIST
285-403	4" IPS x 3" FPT	295.60
285-503	5" IPS x 3" FPT	314.50
285-603	6" IPS x 3" FPT	356.40
285-803	8" IPS x 3" FPT	424.20
285-404	4" IPS x 4" FPT	319.90
285-504	5" IPS x 4" FPT	339.25
285-604	6" IPS x 4" FPT	381.50
285-804	8" IPS x 4" FPT	448.35
285-1004	10" IPS x 4" FPT	522.95
285-1204	12" IPS x 4" FPT	759.85
285-1504	15.3" PIP x 4" FPT	870.85
285-1804	18.7" PIP x 4" FPT	1,172.15

PART #	SIZE	LIST
286-44	4" IPS x 4" x 36"	428.10
286-64	6" IPS x 4" x 36"	487.80
286-84	8" IPS x 4" x 36"	560.15
286-86	8" IPS x 6" x 36"	697.45
286-104	10" IPS x 4" x 36"	651.35
286-106	10" IPS x 6" x 36"	788.70
286-124	12" IPS x 4" x 36"	908.10
286-126	12" IPS x 6" x 36"	1,027.60
286-154	15" PIP x 4" x 36"	1,041.95
286-156	15" PIP x 6" x 36"	1,201.55
286-184	18" PIP x 4" x 36"	1,355.80
286-186	18" PIP x 6" x 36"	1,514.90



### WATER TIGHT



#### END ELL RISER

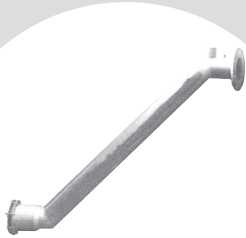
PART #	SIZE	LIST
287-44	4" IPS x 4" x 36"	335.45
287-64	6" IPS x 4" x 36"	375.10
287-84	8" IPS x 4" x 36"	418.90
287-86	8" IPS x 6" x 36"	588.15
287-104	10" IPS x 4" x 36"	468.75
287-106	10" IPS x 6" x 36"	635.45
287-124	12" IPS x 4" x 36"	652.60
287-126	12" IPS x 6" x 36"	760.20
287-154	15" PIP x 4" x 36"	704.85
287-156	15" PIP x 6" x 36"	855.35
287-184	18" PIP x 4" x 36"	872..85
287-186	18" PIP x 6" x 36"	1,032.90

#### FLANGE ADAPTER

PART #	SIZE	LIST
262-44	4" IPS x 4" Flg	251.25
262-66	6" IPS/GTG x 6" Flg	370.85
262-88	8" IPS/GTG x 8" Flg	504.65
262-1010	10" IPS/GTG x 10" Flg	642.25
262-1212	12" IPS/GTG x 12" Flg	658.95
262-1514	15.3" PIP x 14" Flg	781.60
262-1516	15.3" PIP x 16" Flg	822.65
262-1816	18.7" PIP x 16" Flg	1,102.95
262-1818	18.7" PIP x 18" Flg	1,129.85
262-2120	22.047" PIP x 20" Flg	1,905.80
262-2424	24.803" PIP x 24" Flg	1,908.95
262-2724	27.953" PIP x 24" Flg	3,038.80

#### REDUCER

PART #	SIZE	LIST
284-43	4" x 3" IPS	244.90
284-54	5" x 4" IPS	285.90
284-64	6" x 4" IPS/GTG	309.35
284-86	8" x 6" IPS/GTG	400.95
284-106	10" x 6" IPS/GTG	521.40
284-108	10" x 8" IPS/GTG	504.10
284-128	12" x 8" IPS/GTG	711.25
284-1210	12" x 10" IPS/GTG	700.25
284-1512	15.3" x 12.24" PIP	961.50
284-1815	18.7" x 15.3" PIP	1,573.15
284-2421	24.803" x 22.047" PIP	3,530.30
284-2724	27.953" x 24.803" PIP	4,290.25



#### ZEE DROP - GALVANIZED

PART #	SIZE	LIST
288-352	3" IPS x 52"	673.10
288-452	4" IPS x 52"	762.25
288-552	5" IPS x 52"	782.95
288-652IPS	6" IPS x 52"	799.40
288-852IPS	8" IPS x 52"	1,052.65
288-1052IPS	10" IPS x 52"	1,326.85
288-1252IPS	12" IPS x 52"	1,811.80
288-652PIP	6" PIP x 52"	799.40
288-852PIP	8" PIP x 52"	1,052.65
288-1052PIP	10" PIP x 52"	1,326.85
288-12052PIP	12" PIP x 52"	1,811.75

2" FPT and 3/4" FPT Outlets

#### GOOSENECK - GALVANIZED

PART #	SIZE	LIST
289-352	3" IPS x 52"	629.65
289-452	4" IPS x 52"	731.95
289-552	5" IPS x 52"	740.40
289-652IPS	6" IPS x 52"	753.95
289-852IPS	8" IPS x 52"	967.30
289-1052IPS	10" IPS x 52"	1,202.45
289-1252IPS	12" IPS x 52"	1,648.90
289-652PIP	6" PIP x 52"	753.95
289-852PIP	8" PIP x 52"	967.30
289-1052PIP	10" PIP x 52"	1,202.45
289-1252PIP	12" PIP x 52"	1,648.90

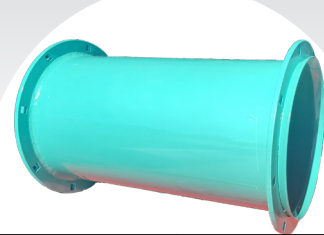
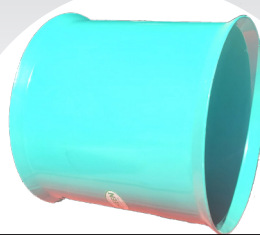
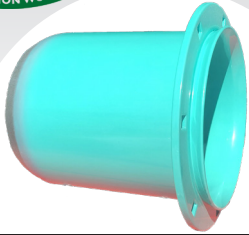
2" FPT and 3/4" FPT Outlets

#### DRESSER GASKETS

PART #	SIZE	LIST
200-30	3" IPS	3.50
200-40	4" IPS	3.95
200-50	5" IPS	4.30
200-60	6" IPS	4.95
200-80	8" IPS	6.45
200-100	10" IPS	7.25
200-120	12" IPS	8.15
200-58	6" PIP	4.70
200-78	8" PIP	6.05
200-98	10" PIP	6.45
200-118	12" PIP	7.95
200-150	15" PIP	9.80



### WATER TIGHT



#### STARTER COUPLER BODY

#### MEDIUM BODY

#### LONG BODY

PART #	SIZE/WELD	LIST
279-B30	3" IPS x OD	53.30
279-B40	4" IPS x OD	59.25
279-B50	5" IPS x OD	65.95
279-B60	6" IPS x OD	78.25
279-B80	8" IPS x OD	97.80
279-B100	10" IPS x OD	118.90
279-B120	12" IPS x OD	178.10
279-B150	15.3" PIP	221.25
279-B180	18.7" PIP	296.10
279-B210	22.047" PIP	599.25
279-B240	24.803" PIP	737.95
279-B270	27.953" PIP	909.95

PART #	SIZE/LENGTH	LIST
235-B30	3" IPS x 10"	36.95
235-B40	4" IPS x 10"	42.40
235-B50	5" IPS x 10"	48.90
235-B60	6" IPS x 10"	55.65
235-B80	8" IPS x 10"	67.30
235-B100	10" IPS x 10"	85.55
235-B120	12" IPS x 10"	114.95
235-B150	15" PIP x 10"	141.80

PART #	SIZE/LENGTH	LIST
240-B30	3" IPS x 16"	106.40
240-B40	4" IPS x 16"	118.25
240-B50	5" IPS x 16"	131.55
240-B60	6" IPS x 17"	156.15
240-B80	8" IPS x 18"	195.25
240-B100	10" IPS x 18"	238.10
240-B120	12" IPS x 18"	337.55
240-B150	15" PIP x 18"	415.95
240-B180	18" PIP x 18"	591.45
240-B210	21" PIP x 24"	899.85
240-B240	24" PIP x 24"	1,110.95
240-B270	27" PIP x 24"	1,369.90



#### TRANSITION & PIP GASKET

#### MEDIUM FLANGE PACKS

#### LONG FLANGE PACKS

PART #	SIZE	LIST
210-30	3" GTG	10.15
210-40	4" GTG	12.50
210-50	5" GTG	15.35
210-60	6" GTG	17.20
210-80	8" GTG	20.95
210-100	10" GTG	41.30
210-120	12" GTG	49.35
200-150	15" PIP	9.80
200-180	18" PIP	17.80
200-210	21" PIP	128.20
200-240	24" PIP	157.95
200-270	27" PIP	194.60

PART #	SIZE	LIST
235-FLP30IPS	3"	68.30
235-FLP40IPS	4"	78.40
235-FLP50IPS	5"	90.65
235-FLP60IPS/PIP	6"	102.80
235-FLP80IPS/PIP	8"	125.10
235-FLP100IPS/PIP	10"	158.70
235-FLP120IPS/PIP	12"	228.50
235-FLP150PIP/PIP	15"	275.55
C-6IPS	6" IPS Flange	37.95
C-8IPS	8" IPS Flange	52.35
C-10IPS	10" IPS Flange	65.10
C-12IPS	12" IPS Flange	112.45

PART #	SIZE	LIST
240-FLP30IPS	3"	69.80
240-FLP40IPS	4"	77.20
240-FLP50IPS	5"	85.85
240-FLP60IPS/PIP	6"	101.95
240-FLP80IPS/PIP	8"	127.55
240-FLP100IPS/PIP	10"	155.50
240-FLP120IPS/PIP	12"	236.15
240-FLP150PIP	15"	290.50
240-FLP180PIP	18"	415.00
C-15.3	15" PIP Flange	118.40
C-18.7	18" PIP Flange	158.45
C-24.803	24" PIP Flange	394.55



### UNDERGROUND COMPRESSION



#### PIP GASKETED STARTER COUPLER

PART #	SIZE	LIST
275-60	6" PIP x OD	68.35
275-80	8" PIP x OD	81.50
275-100	10" PIP x OD	111.55
275-120	12" PIP x OD	150.20
275-150	15.3" PIP x 16" OD	313.45
275-180	18.7" PIP x 18.7" OD	443.85
275-1818	18.7" PIP x 18" OD	467.25

#### IPS GASKETED STARTER COUPLER

PART #	SIZE	LIST
272-30	3" IPS x OD	49.20
272-40	4" IPS x OD	61.50
272-50	5" IPS x OD	72.15
272-60	6" IPS x OD	76.20
272-80	8" IPS x OD	88.90
272-100	10" IPS x OD	124.75
272-120	12" IPS x OD	149.45

#### IPS REPAIR COUPLER

PART #	SIZE	LIST
244-30	3" IPS	107.65
244-40	4" IPS	113.45
244-50	5" IPS	148.90
244-60	6" IPS	151.55
244-80	8" IPS	197.35
244-100	10" IPS	265.40
244-120	12" IPS	354.50



#### PIP REPAIR COUPLER

PART #	SIZE	LIST
245-60	6" PIP	145.20
245-80	8" PIP	189.85
245-100	10" PIP	246.55
245-120	12" PIP	330.15
245-150	15" PIP	696.95
245-180	18" PIP	886.85

#### IPS 90° ELBOW

PART #	SIZE	LIST
250-30	3" IPS	180.25
250-40	4" IPS	239.85
250-50	5" IPS	288.80
250-60IPS	6" IPS	313.85
250-80IPS	8" IPS	401.55
250-100IPS	10" IPS	545.95
250-120IPS	12" IPS	671.70

#### PIP 90° ELBOW

PART #	SIZE	LIST
250-60PIP	6.14" PIP	299.45
250-80PIP	8.16" PIP	385.50
250-100PIP	10.2" PIP	531.55
250-120PIP	12.24" PIP	650.95
250-150	15.3" PIP	1,316.60
250-180	18.7" PIP	1,539.85



#### IPS 45° ELBOW

PART #	SIZE	LIST
251-30	3" IPS	153.30
251-40	4" IPS	209.95
251-50	5" IPS	237.30
251-60IPS	6" IPS	279.45
251-80IPS	8" IPS	345.15
251-100IPS	10" IPS	464.90
251-120IPS	12" IPS	575.40

#### PIP 45° ELBOW

PART #	SIZE	LIST
251-60PIP	6" PIP	263.70
251-80PIP	8" PIP	338.45
251-100PIP	10" PIP	450.40
251-120PIP	12" PIP	557.30
251-150	15" PIP	997.80
251-180	18" PIP	1,197.15

#### IPS TEE

PART #	SIZE	LIST
252-30	3" IPS	190.50
252-40	4" IPS	236.35
252-50	5" IPS	298.90
252-60IPS	6" IPS	305.90
252-80IPS	8" IPS	427.55
252-100IPS	10" IPS	567.30
252-120IPS	12" IPS	907.10



### UNDERGROUND COMPRESSION



**PIP TEE**

PART #	SIZE	LIST
252-60PIP	6" PIP	295.55
252-80PIP	8" PIP	102.30
252-100PIP	10" PIP	553.90
252-120PIP	12" PIP	866.95
252-150	15" PIP	1,507.55
252-180	18" PIP	1,990.20



**IPS CROSS**

PART #	SIZE	LIST
253-30	3" IPS	260.25
253-40	4" IPS	345.65
253-50	5" IPS	407.60
253-60IPS	6" IPS	436.80
253-80IPS	8" IPS	577.10
253-10IPS	10" IPS	791.55
253-12IPS	12" IPS	1,133.35



**PIP CROSS**

PART #	SIZE	LIST
253-60PIP	6" PIP	395.90
253-80PIP	8" PIP	555.15
253-100PIP	10" PIP	751.25
253-120PIP	12" PIP	1,107.35
253-150	15" PIP	1,798.40
253-180	18" PIP	2,396.25



**IPS END PLUG**

PART #	SIZE	LIST
270-30IPS	3"	69.70
270-40IPS	4"	87.50
270-50IPS	5"	129.20
270-60IPS	6"	130.50
270-80IPS	8"	159.65
270-100IPS	10"	237.85
270-120IPS	12"	319.95



**PIP END PLUG**

PART #	SIZE	LIST
270-60PIP	6"	124.10
270-80PIP	8"	140.25
270-100PIP	10"	220.95
270-120PIP	12"	321.85
270-150PIP	15"	515.55
270-180PIP	18"	873.65



**IPS END CAP**

PART #	SIZE	LIST
273-30IPS	3"	73.60
273-40IPS	4"	91.95
273-50IPS	5"	134.65
273-60IPS	6"	137.50
273-80IPS	8"	167.35
273-100IPS	10"	247.55
273-120IPS	12"	330.45



**PIP END CAP**

PART #	SIZE	LIST
273-60PIP	6"	130.95
273-80PIP	8"	148.40
273-100PIP	10"	230.65
273-120PIP	12"	332.10
273-150PIP	15"	543.70
273-180PIP	18"	929.15



**UCF IPS GASKETS**

PART #	SIZE	LIST
202-30	3" IPS	9.40
202-40	4" IPS	10.45
202-50	5" IPS	13.45
202-60	6" IPS	14.70
202-80	8" IPS	18.40
202-100	10" IPS	35.70
202-120	12" IPS	43.95



**UCF PIP GASKETS**

PART #	SIZE	LIST
205-60	6" PIP	13.85
205-80	8" PIP	17.35
205-100	10" PIP	34.60
205-120	12" PIP	41.80
205-150	15" PIP	51.20
205-180	18" PIP	107.35



### UNDERGROUND COMPRESSION



#### IPS SERVICE TEE

PART #	SIZE	LIST
255-403IPS	4" IPS x 3" FPT	215.70
255-503IPS	5" IPS x 3" FPT	238.45
255-603IPS	6" IPS x 3" FPT	243.65
255-803IPS	8" IPS x 3" FPT	295.90
255-404IPS	4" IPS x 4" FPT	245.25
255-504IPS	5" IPS x 4" FPT	274.45
255-604IPS	6" IPS x 4" FPT	284.65
255-804IPS	8" IPS x 4" FPT	350.50
255-104IPS	10" IPS x 4" FPT	420.20
255-124IPS	12" IPS x 4" FPT	488.85

#### PIP SERVICE TEE

PART #	SIZE	LIST
255-603PIP	6" PIP x 3" FPT	236.25
255-803PIP	8" PIP x 3" FPT	302.40
255-604PIP	6" PIP x 4" FPT	264.45
255-804PIP	8" PIP x 4" FPT	341.80
255-104PIP	10" PIP x 4" FPT	391.35
255-124PIP	12" PIP x 4" FPT	483.30
255-154PIP	15" PIP x 4" FPT	814.90
255-184PIP	18" PIP x 4" FPT	1,344.65

#### IPS FLANGE ADAPTER

PART #	SIZE	LIST
263-30	3" FLG x 3" IPS	136.75
263-40	4" FLG x 4" IPS	150.20
263-64	6" FLG x 4" IPS	172.35
263-60	6" FLG x 6" IPS	234.70
263-86	8" FLG x 6" IPS	301.75
263-80	8" FLG x 8" IPS	304.95
263-108	10" FLG x 8" IPS	504.70
263-1010	10" FLG x 10" IPS	476.75
263-1210	12" FLG x 10" IPS	547.95
263-1212	12" FLG x 12" IPS	558.80



#### PIP FLANGE ADAPTER

PART #	SIZE	LIST
264-60	6" FLG x 6" PIP	211.10
264-86	8" FLG x 6" PIP	292.60
264-80	8" FLG x 8" PIP	294.20
264-108	10" FLG x 8" PIP	495.30
264-100	10" FLG x 10" PIP	547.95
264-1210	12" FLG x 10" PIP	541.50
264-120	12" FLG x 12" PIP	561.70
264-1215	12" FLG x 15" PIP	777.60
264-1415	14" FLG x 15" PIP	814.40
264-180	18" FLG x 18" PIP	1,130.20

#### IPS REDUCER

PART #	SIZE	LIST
254-43IPS	4" x 3"	145.20
254-54IPS	5" x 4"	184.50
254-64IPS	6" x 4"	184.50
254-86IPS	8" x 6"	236.60
254-106IPS	10" x 6"	307.75
254-108IPS	10" x 8"	315.55
254-128IPS	12" x 8"	358.65
254-1210IPS	12" x 10"	371.25

#### PIP REDUCER

PART #	SIZE	LIST
254-86PIP	8" x 6"	221.70
254-106PIP	10" x 6"	312.30
254-108PIP	10" x 8"	315.40
254-128PIP	12" x 8"	409.45
254-1210PIP	12" x 10"	371.25
254-1512PIP	15" x 12"	869.45
254-1815PIP	18" x 15"	1,391.55



### UNDERGROUND COMPRESSION



**IPS TEE RISER**

PART #	SIZE	LIST
256-44IPS	4" x 4" x 36"	361.25
256-54IPS	5" x 4" x 36"	390.75
256-64IPS	6" x 4" x 36"	395.70
256-84IPS	8" x 4" x 36"	496.60
256-104IPS	10" x 4" x 36"	542.90
256-124IPS	12" x 4" x 36"	614.20



**PIP TEE RISER**

PART #	SIZE	LIST
256-64PIP	6" x 4" x 36"	386.10
256-84PIP	8" x 4" x 36"	445.15
256-104PIP	10" x 4" x 36"	502.80
256-12PIP	12" x 4" x 36"	600.95
256-154PIP	15" x 4" x 36"	873.65
256-184PIP	18" x 4" x 36"	1,225.25



**IPS END ELL RISER**

PART #	SIZE	LIST
260-44IPS	4" x 4" x 36"	288.55
260-54IPS	5" x 4" x 36"	308.60
260-64IPS	6" x 4" x 36"	320.30
260-84IPS	8" x 4" x 36"	344.35
260-104IPS	10" x 4" x 36"	388.70
260-124IPS	12" x 4" x 36"	443.70



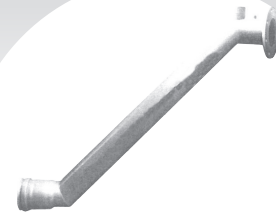
**PIP END ELL RISER**

PART #	SIZE	LIST
260-64PIP	6" x 4" x 36"	298.30
260-84PIP	8" x 4" x 36"	337.80
260-104PIP	10" x 4" x 36"	379.40
260-124PIP	12" x 4" x 36"	438.80
260-154PIP	15" x 4" x 36"	662.50
260-184PIP	18" x 4" x 36"	917.50



**J DROP**

PART #	SIZE	LIST
257-642IPS	6" IPS x 42"	548.65
257-842IPS	8" IPS x 42"	690.95
257-1042IPS	10" IPS x 42"	908.15
257-642PIP	6" PIP x 42"	548.65
257-842PIP	8" PIP x 42"	690.95
257-1042PIP	10" PIP x 42"	908.15



**ZEE DROP**

PART #	SIZE	LIST
258-452IPS	4" IPS x 52"	790.65
258-652IPS	6" IPS x 52"	821.70
258-852IPS	8" IPS x 52"	1,077.60
258-1052IPS	10" IPS x 52"	1,379.20
258-1252IPS	12" IPS x 52"	1,860.40
258-652PIP	6" PIP x 52"	821.70
258-852PIP	8" PIP x 52"	1,077.60
258-1052PIP	10" PIP x 52"	1,379.20
258-12052PIP	12" PIP x 52"	1,860.40



**IPS GOOSENECK**

PART #	SIZE	LIST
259-652IPS	6" IPS x 52"	803.15
259-852IPS	8" IPS x 52"	916.80
259-1052IPS	10" IPS x 52"	1,155.95
259-1252IPS	12" IPS x 52"	1,558.20



**PIP GOOSENECK**

PART #	SIZE	LIST
259-652PIP	6" PIP x 52"	803.15
259-852PIP	8" PIP x 52"	916.80
259-1052PIP	10" PIP x 52"	1,115.95
259-1252PIP	12" PIP x 52"	1,558.20

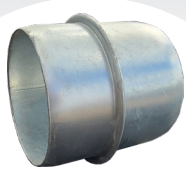


**SURGE PLUG/AIR VENT ARM**

PART #	SIZE	LIST
VA2MT	2"	118.20
VA3MT	3"	179.15
VA4MT	4"	243.30



### RING LOCK



#### PRESS IN GALV. MALE

PART #	SIZE	LIST
RLM4	4" 12 Gauge	42.60
RLM5	5" 12 Gauge	44.25
RLM6	6" 12 Gauge	46.70
RLM8	8" 12 Gauge	60.95
RLM10	10" 12 Gauge	68.50
RLM12	12" 12 Gauge	83.95



#### PRESS IN GALV. FEMALE

PART #	SIZE	LIST
RLF4	4" 12 Gauge	44.90
RLF5	5" 12 Gauge	49.45
RLF6	6" 12 Gauge	56.40
RLF8	8" 12 Gauge	73.80
RLF10	10" 12 Gauge	91.35
RLF12	12" 12 Gauge	127.95



#### RING LOCK CLAMPS

PART #	SIZE	LIST
3RLC	3"	24.50
4RLC	4"	12.14
6RLC	6"	18.68
8RLC	8"	21.68
10RLC	10"	28.20
12RLC	12"	30.08



#### WELD ON MALE

PART #	SIZE	LIST
215-30	3" 14 Gauge	23.10
215-40	4" 10 Gauge	37.30
215-50	5" 10 Gauge	40.85
215-60	6" 10 Gauge	42.85
215-80	8" 10 Gauge	52.65
215-100	10" 10 Gauge	55.10
215-120	12" 10 Gauge	75.55



#### WELD ON FEMALE

PART #	SIZE	LIST
225-30	3" 14 Gauge	21.80
225-40	4" 10 Gauge	38.95
225-50	5" 10 Gauge	41.10
225-60	6" 10 Gauge	50.10
225-80	8" 10 Gauge	66.15
225-100	10" 10 Gauge	74.35
225-120	12" 10 Gauge	103.95



#### DEEP PUNCH STARTER

PART #	SIZE	LIST
226-30	3" 14 Gauge	25.25
226-40	4" 12 Gauge	37.95
226-50	5" 12 Gauge	39.75
226-60	6" 12 Gauge	45.50
226-80	8" 12 Gauge	59.40
226-100	10" 12 Gauge	66.95
226-120	12" 12 Gauge	94.20



#### PRESS IN VALVE TEE

PART #	SIZE	LIST
214-40	4" RL x 4" Valve	183.80
214-50	5" RL x 4" Valve	197.55
214-60	6" RL x 4" Valve	209.25
214-80	8" RL x 4" Valve	249.85
214-100	10" RL x 4" Valve	272.70
214-120	12" RL x 4" Valve	333.65



#### QUICK RELEASE CLAMPS

PART #	SIZE	LIST
QRC4	4"	50.85
QRC5	5"	52.70
QRC6	6"	54.25
QRC8	8"	58.75
QRC10	10"	72.15
QRC12	12"	93.75



#### IN LINE VALVE TEE

PART #	SIZE	LIST
212-40	4" RL x 4" Valve	260.50
212-50	5" RL x 4" Valve	272.75
212-60	6" RL x 4" Valve	305.50
212-80	8" RL x 4" Valve	352.35
212-100	10" RL x 4" Valve	422.90
212-120	12" RL x 4" Valve	476.95



### RING LOCK



#### 90° ELBOW

PART #	SIZE	LIST
RLEL4	4" M x F	164.50
RLEL5	5" M x F	202.80
RLEL6	6" M x F	226.50
RLEL8	8" M x F	315.95
RLEL10	10" M x F	425.65
RLEL12	12" M x F	513.90



#### 45° ELBOW

PART #	SIZE	LIST
RLEL4-45	4" M x F	147.95
RLEL5-45	5" M x F	163.10
RLEL6-45	6" M x F	203.80
RLEL8-45	8" M x F	241.70
RLEL10-45	10" M x F	333.85
RLEL12-45	12" M x F	409.25



#### LINE TEE

PART #	SIZE	LIST
RLLT4	4" M x F x F	191.55
RLLT5	5" M x F x F	229.20
RLLT6	6" M x F x F	243.15
RLLT8	8" M x F x F	349.40
RLLT10	10" M x F x F	540.45
RLLT12	12" M x F x F	695.15



#### END PLUG

PART #	SIZE	LIST
RLEP4	4"	61.95
RLEP5	5"	67.50
RLEP6	6"	84.85
RLEP8	8"	108.55
RLEP10	10"	166.10
RLEP12	12"	201.30



#### END TEE

PART #	SIZE	LIST
RLET4	4" F x F x M	191.55
RLET5	5" F x F x M	229.20
RLET6	6" F x F x M	243.15
RLET8	8" F x F x M	349.40
RLET10	10" F x F x M	540.45
RLET12	12" F x F x M	695.15



#### REDUCER

PART #	SIZE	LIST
RLRED64	6" M x 4" F	127.75
RLRED65	6" M x 5" F	148.30
RLRED86	8" M x 6" F	187.75
RLRED106	10" M x 6" F	235.75
RLRED108	10" M x 8" F	222.90
RLRED1210	12" M x 10" F	288.30



#### FEMALE HOSE ADAPTER

PART #	SIZE	LIST
RLFHA4	4" RLF x Hose	86.95
RLFHA5	5" RLF x Hose	112.60
RLFHA6	6" RLF x Hose	125.45
RLFHA8	8" RLF x Hose	188.40
RLFHA100	10" RLF x Hose	235.90
RLFHA120	12" RLF x Hose	292.40



#### MALE HOSE ADAPTER

PART #	SIZE	LIST
RLMHA4	4" RLM x Hose	83.25
RLMHA5	5" RLM x Hose	107.10
RLMHA6	6" RLM x Hose	121.80
RLMHA8	8" RLM x Hose	171.75
RLMHA100	10" RLM x Hose	216.90
RLMHA120	12" RLM x Hose	275.25



#### RING LOCK VALVE OPENER

PART #	RL/RLF	LIST
RLVOE44	4" x 4"	240.85
RLVOE55	5" x 5"	350.65
RLVOE64	6" x 4"	311.60
RLVOE66	6" x 6"	352.35
RLVOE86	8" x 6"	521.80
RLVOE88	8" x 8"	531.85



### RING LOCK ALUMINUM



#### RING LOCK COUPLERS

PART #	SIZE	LIST
710185	6" Assembly	
710186	8" Assembly	
710187	10" Assembly	
710157	6" Female	
710159	8" Female	
710160	10" Female	
710161	6" Male	
710162	8" Male	
710163	10" Male	



#### RING LOCK CLAMP ALUM.

PART #	SIZE	LIST
710051	6"	
710052	8"	
710053	10"	
For Aluminum Ring Lock Couplers Only		



#### RING LOCK VALVES

PART #	SIZE	LIST
710164	6" x 4" Weld On	
710165	8" x 4" Weld On	
710166	10" x 4" Weld On	
710080	6" x 4" MxF In Line	
710081	8" x 4" MxF In Line	
710082	10" x 4" MxF In Line	



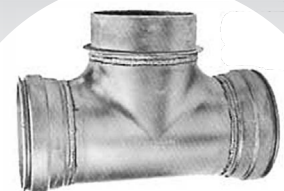
#### RING LOCK ELBOW

PART #	SIZE	LIST
710189	6"	
710190	8"	
710191	10"	



#### RING LOCK LINE TEE

PART #	SIZE	LIST
710220	6"	
710221	8"	
710230	10"	



#### RING LOCK END TEE

PART #	SIZE	LIST
710231	6"	
710240	8"	
710241	10"	



#### RING LOCK END PLUG

PART #	SIZE	LIST
710170	6"	
710171	8"	
710180	10"	



#### RING LOCK VOE

PART #	SIZE	LIST
710267	4" x 3"	
710268	4" x 4"	



#### RING LOCK VOE TEE

PART #	SIZE	LIST
710275	4" x 3"	
710276	4" x 4"	



### MAINLINE LATCH ALUMINUM



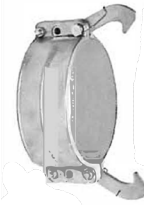
#### LATCH FEMALE COUPLER

PART #	SIZE	LIST
710054	4"	
710055	5"	
710056	6"	
710058	8"	
710059	10"	



#### LATCH MALE COUPLER

PART #	SIZE	LIST
710990	4"	
710168	8"	
710169	10"	



#### LATCH MALE HEAVY BAND

PART #	SIZE	LIST
710158	8"	



#### 90° LATCH ELBOW

PART #	SIZE	LIST
710195	5"	
710196	6"	
710198	8"	
710199	10"	



#### LATCH LINE TEE

PART #	SIZE	LIST
710225	5"	
710226	6"	
710228	8"	
710229	10"	



#### LATCH END TEE

PART #	SIZE	LIST
710235	5"	
710236	6"	
710238	8"	
710239	10"	



#### LATCH END PLUG

PART #	SIZE	LIST
710175	5"	
710176	6"	



#### LATCH HEAVY END PLUG

PART #	SIZE	LIST
710178	8"	
710179	10"	



#### BAND AND LATCH, LATCH PAD

PART #	SIZE	LIST
710114	4"	
710115	5"	
710116	6"	
710106	6" Latch Pad	



ALUMINUM NO LATCH  
HANDLINE FITTINGS



DROP LOCK PRESS IN

PART #	SIZE	LIST
PLCR-300	3" Coupler, 1" Outlet	50.00
PLML-300	3" Latch	10.50
PLC300	3" Plug	40.00



NO LATCH WELD ON

PART #	SIZE	LIST
712033	3" x 3/4" Outlet	
712034	4" x 3/4" Outlet	



NO LATCH BAND

PART #	SIZE	LIST
710133	3"	
710134	4"	



NO LATCH ADAPTER

PART #	SIZE	LIST
710302	2"	
710303	3"	
710304	4"	



90° ELBOW

PART #	SIZE	LIST
710202	2"	
710203	3"	
710204	4"	



45° ELBOW

PART #	SIZE	LIST
710439	3"	
710440	4"	



END PLUG

PART #	SIZE	LIST
710182	2"	
712779	3"	
710184	4"	



LINE TEE

PART #	SIZE	LIST
710242	2"	
710243	3"	
710244	4"	



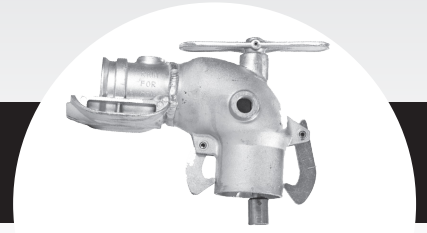
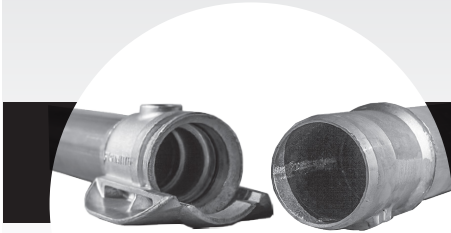
END TEE

PART #	SIZE	LIST
710252	2"	
710253	3"	
710254	4"	



**LAKE® RAINITITE™**

RAINITITE IS THE LEAK-FREE ALUMINUM PIPE THAT WILL MAKE YOUR OPERATION RUN SMOOTHER. THE LIGHT WEIGHT DESIGN MAKES RAINITITE QUICK AND EASY TO INSTALL AND BREAKDOWN, SAVING YOU VALUABLE TIME AND MONEY.



**RAINITITE™ PIPE**

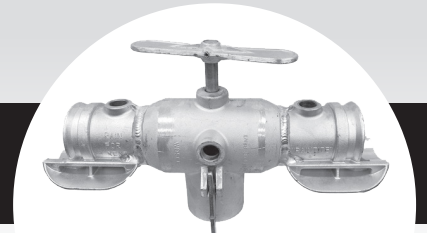
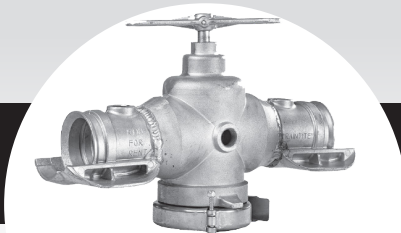
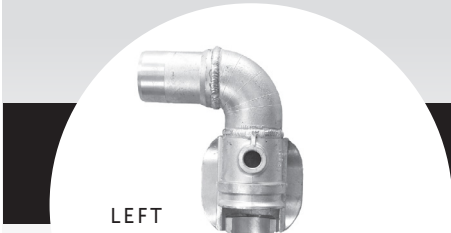
**RAINITITE™ VALVE OPENING ELBOW**

**RAINITITE™ VALVE OPENING ELBOW**

PART #	SIZE	LIST
1012471	3" x 30'	

PART #	SIZE	LIST
1012643	4" RL x 3" RT	

PART #	SIZE	LIST
1012519	4" VL x 3" RT	



**RAINITITE™ ELBOW 90°**

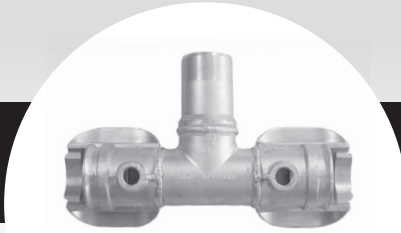
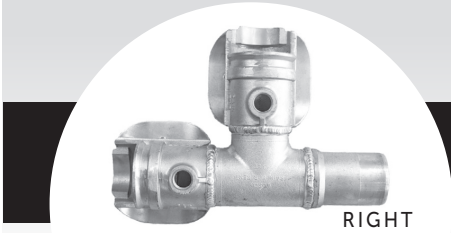
**RAINITITE™ VALVE OPENING TEE**

**45° ELBOW**

PART #	SIZE	LIST
1012520	3" Left	
1012521	3" Right	

PART #	SIZE	LIST
1012583	4" RL x 3" RT	

PART #	SIZE	LIST
1012763	4" VL x 3" RT	



**RAINITITE™ LINE TEE**

**RAINITITE™ END TEE**

**RAINITITE™ END PLUGS**

PART #	SIZE	LIST
1012525	3" Right	
1012526	3" Left	

PART #	SIZE	LIST
1012522	3"	

PART #	SIZE	LIST
1012951	3" Standard	
1012518	3" w/ Handle	



### STATIONARY VALVE LATCH ALUMINUM



#### STATIONARY VALVE

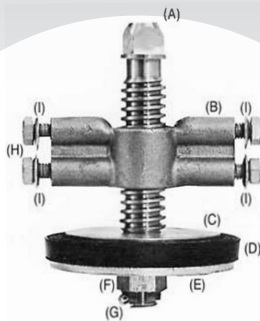
#### VALVE OPENER

#### VALVE OPENING TEE

PART #	SIZE	LIST
710079	4" Weld	
710094	4" FPT	

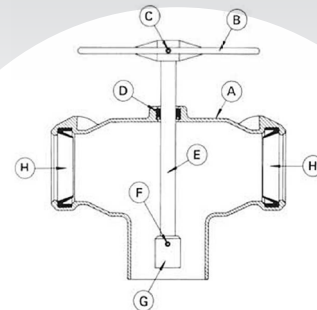
PART #	SIZE	LIST
710263	3"	
710264	4"	

PART #	SIZE	LIST
710273	3"	
710274	4"	



#### MAINLINE VALVE PARTS

PART #	LETTER	DESCRIPTION	LIST
710460	A	Valve Screw Brass	
710461	B	Valve Wing Nut Brass	
710462	C	3 1/4" Valve Washer Top	
710463	D	4" Valve Disc	
710464	E	5" Valve Disc	
710465	F	3 7/8" Washer Bottom	
710466	G	5/8" Castillated Nut	
710467	H	Cotter Key Brass	
710468	I	3/8" x 1" Hex Bolt Plated	
710469	J	Wing Nut Washer Old Style	



#### VALVE OPENER PARTS

PART #	LETTER	DESCRIPTION	LIST
700263	A	3" x 4" Valve Body	
700264	A	4" x 4" Valve Body	
700471	B	Handle	
700472	C	1/4" x 1 5/8" Roll Pin	
700411	D	3/4" Chevron Gasket	
700470	E	Valve Opening Stem	
710475	F	1/4" x 1 1/4" Connecting Pin	
710474	G	Connecting Joint	
710413	H	3" ND Gasket	
710414	H	4" ND Gasket	
710476	I	Short Latch VOE	
710490	J	1/4" Latch VOT (2)	



### VALVES & FABRICATED ALUMINUM FITTINGS



**VALVE WELD ON**

PART #	SIZE	LIST
710064	4"	
710065	5"	
710066	6"	
710068	8"	



**VALVE IN LINE M X F**

PART #	SIZE	LIST
710089	4"	
710090	5"	
710091	6"	
710092	8"	
710093	10"	



**VALVE IN LINE F X F**

PART #	SIZE	LIST
710084	4"	
710085	5"	
710086	6"	
710088	8"	



**REDUCING CONE**

PART #	SIZE	LIST
710632	3" x 2"	
710633	4" x 2"	
710634	4" x 3"	
710630	5" x 4"	
710635	6" x 4"	
710636	6" x 5"	
710637	8" x 6"	
710639	10" x 8"	
710641	12" x 10"	



**WELD ON DISC**

PART #	SIZE	LIST
710652	2"	
710653	3"	
710654	4"	
710656	6"	
710658	8"	
710659	10"	



**WELD ON NIPPLE**

PART #	SIZE	LIST
710862	2"	
710863	3"	
710864	4"	
710865	5"	
710866	6"	
710868	8"	



**WELD ON DOME**

PART #	SIZE	LIST
710666	6"	
710668	8"	
710669	10"	



**WELD ON ELBOW**

PART #	SIZE	LIST
710644	4"	
710646	6"	
710648	8"	
710649	10"	



**WELD ON TEE**

PART #	SIZE	LIST
710126	6"	
710128	8"	
710130	10"	

### UNIVERSAL HANDLINE FITTINGS

#### BAFSCO™ LATERAL AND MAINLINE SCREENS

PART #	SIZE	MESH	METAL	PIPE TYPE	RING ID	RING OD	LIST
LS318	3" x 18"	3/32	Plated	Open & Rolled End Pipe	2 3/4"	3"	30.00
LS336	3" x 36"	3/32"	Plated	Open End Pipe	2 9/16"	3"	38.00
LS336S	3" x 36"	3/32"	Plated	Open & Rolled End Pipe	2 5/16"	2 7/8"	46.95
LS418	4" x 18"	3/32"	Plated	Open and Rolled End Pipe	3 3/8"	4"	40.85
LS436	4" x 36"	3/32"	Plated	Open and Rolled End Pipe	3 3/8"	4"	66.10



PLATED  
LS318



STAINLESS  
SS436

#### CLEMONS LATERAL LINE STRAINERS

C-LS218	2" x 18"	3/32"	Stainless	Open End Pipe	1 3/4"	2"	87.53
C-LS318	3" x 18"	3/32"	Stainless	Open End Pipe	2 1/2"	3"	95.16
C-LS418	4" x 18"	3/32"	Stainless	Open End Pipe	3 1/2"	4"	106.42
C-LS518	5" x 18"	3/32"	Stainless	Open End Pipe	4 1/2"	5"	111.56
C-LS336	3" x 36"	3/32"	Stainless	Open End Pipe	2 1/2"	3"	128.94
C-LS436	4" x 36"	3/32"	Stainless	Open End Pipe	3 1/2"	4"	151.46
C-LS636	6" x 36"	3/32"	Stainless	Open End Pipe	5 1/2"	6"	196.51
C-LS836	8" x 36"	3/32"	Stainless	Open End Pipe	7 1/2"	8"	201.65
C-LS1036	10" x 36"	3/32"	Stainless	Open End Pipe	9 1/2"	10"	269.21



#### BAFSCO™ ROAD GUARD

PART #	TYPE	LIST
CS100	Clamp on Screen	15.00
CD75	Crop Deflector	1.65



#### BAFSCO™ ROAD GUARD

PART #	TYPE	LIST
CD100	Clamp on Deflector	12.50
RD100	Clamp on Deflector	12.50



#### SNAP ON ROAD GUARD

PART #	TYPE	LIST
711897	Solid	Call
711503	Screen	



#### CENTER RISER SADDLE BOLT-ON

PART #	SIZE	LIST
3CRS	3" w/foot 1" Outlet	15.80
4CRS	4" w/foot 1" Outlet	42.40



#### CENTER RISER PRESS IN

PART #	SIZE	LIST
3CRP75	3" w/ 3/4" Outlet	36.65
4CRP75	4" w/ 3/4" Outlet	45.95



#### CENTER RISER PRESS IN

PART #	SIZE	LIST
3CRP	3" w/ 1" Outlet	38.20
4CRP	4" w/ 1" Outlet	47.80

### HANDLINE PARTS AND HOOKS



#### WESTERN STYLE HOOK BOSS

PART #	DESCRIPTION	LIST
107-01	Small 2"	4.90
107-02	Large 3"-6"	5.50



#### LATCH SPRING

PART #	DESCRIPTION	LIST
107-16	Rainway Spring	2.85
107-17	A & M Spring	2.85



#### MUSHROOM DRAIN PLUG

PART #	SIZE	LIST
DP75	3/4"	2.30
DP875	7/8"	2.50

Replaces mushroom drains, repair holes in pipe or other emergency repairs on holes 3/4" to 1"



#### PIERCE STYLE HOOK CATCH

PART #	DESCRIPTION	LIST
107-03	Small 2"-4"	3.55
107-04	Large 5"-8"	4.75



#### STEEL BAND DOUBLE HOLE

PART #	DESCRIPTION	LIST
107-18	2"	8.80
107-19	3"	9.95
107-20	4"	11.95
107-21	5"	17.15
107-22	6"	19.90



#### ALUMAX TYPE

PART #	ID	OD	LIST
109-03	5/8"	1 1/2"	.65
109-04	1"	3 1/4"	3.70



#### WELD ON HOOK BRACKET

PART #	DESCRIPTION	LIST
107-07	Small 1"	4.75
107-08	Large 2"	6.50



#### LATCHES

PART #	DESCRIPTION	LIST
107-34	Pierce Type	4.98
107-35	Western Type	5.55
107-36	A & M Long	8.40
107-37	A & M Reg.	8.40
107-38	Rainway	8.40
107-39	Rain For Rent Type	2.80
107-40	Felton Slotted	11.35
107-41	Wade PHL	9.10
107-44	Quick Rain 3"	5.55



#### STANDARD TYPE

PART #	ID	OD	LIST
109-01	1 1/4"	2 1/2"	1.30
109-05	7/8"	1 3/4"	1.65



#### ALUMINUM FERRULE

PART #	SIZE	LIST
107-11	5/16"	1.00
107-13	1/2"	1.10



#### FLAT TYPE

PART #	ID	OD	LIST
109-02	7/8"	2 1/2"	.90
109-08	1 1/4"	3"	1.00



#### HANDLINE PIPE CARRIER

PART #	SIZE	LIST
PC30	3"	125.00
PC40	4"	125.00



#### WADE TYPE

PART #	DESCRIPTION	LIST
107-42	Speedmatic SG	8.00
107-43	Positive CX	7.00



#### "O" RING TYPE

PART #	ID	OD	LIST
109-06	1 1/2"	1 7/8"	1.00



### ALUMINUM PIPE

## Torque Tube

4"  
5"



- For wheelmoves
- Lengths 30' and 40'

## Lateral

2"  
3"  
4"



- Available any lengths 10' to 40'
- Your choice of available couplers

## Gated

6"  
8"  
10"  
12"



- Standard gated spacings 24", 30", 38" and 40"  
(Custom spacings extra)
- Available any lengths 20' to 40'
- Available in expanded type steel or aluminum Ringlock Latch Type

## Mainline

4"  
5"  
6"  
8"  
10"  
12"



- With or without valves
- Aluminum or steel couplers available any lengths 20' to 50'

## Industrial Grooved Pipe

3"  
4"  
6"  
8"  
10"  
12"



- Steel or aluminum pipe and couplers  
available any lengths 5' to 40'

## ALUMINUM PIPE SPECIFICATIONS



### ALUMINUM PIPE SPECIFICATIONS

Lake Company Aluminum Pipe Specifications

O.D. (IN.)	PIPE TYPE*	WALL (IN.)	I.D. (IN.)	MAX PIPE WORK PSI	MAX FITTING WORK PSI	MAX TORQUE (IN.-LBS.)	WT/FT. (LBS.)
1-1/4"	L	0.042	1.166	772	80	-	0.203
1-1/2"	L	0.042	1.416	644	80	-	0.232
2"	L	0.05	1.9	575	80	-	0.369
3"	L	0.05	2.9	383	80	-	0.554
3"	V	0.065	2.87	498	498	-	0.72
4"	L,M	0.05	3.9	287	80	-	0.738
4"	W	0.072	3.856	414	200	32,000	1.06
4"	V	0.072	3.856	414	414	-	1.06
5"	G	0.051	4.896	239	N.R.	-	0.942
5"	W	0.078	4.844	357	200	49,000	1.44
5"	W	0.105	4.79	483	200	57,000	1.94
6"	G	0.051	5.898	195	N.R.	-	1.13
6"	M	0.058	5.884	222	80	-	1.28
6"	V	0.083	5.834	318	318	-	1.84
8"	G	0.051	7.898	145	N.R.	-	1.5
8"	M	0.064	7.872	184	80	-	1.89
8"	V	0.083	7.834	237	237	-	2.45
8"	V	0.094	7.812	269	269	-	2.77
10"	M,G	0.064	9.872	147	80	-	2.36
10"	V	0.083	9.834	190	190	-	3.07
10"	V	0.094	9.812	216	216	-	3.47
12"	M,G	0.064	11.872	122	80	-	2.83
12"	V	0.094	11.812	180	180	-	4.17

Notes:

The specifications above are based on Alloy 3004-H26 with a yield strength of 23,000 psi, and a 2 to 1 safety factor. FCR gates have a maximum rating of 20 psi. Rite-Flo gates have a maximum pressure rating of 40 psi.

\* L = Lateral, V = Victaulic, M = Mainline, G = Gated, W = Wheeline \*\* N.R. = Not Rated

### PIPE REPAIR



#### QWIK SEAL KITS

PART #	DESCRIPTION	LIST
QS050	1/2"	10.10
QS075	3/4"	10.10
QS100	1"	10.10
QS125	1 1/4"	10.10
QS150	1 1/2"	10.10
QS200	2"	11.25
QS250	2 1/2"	11.25
QS300	3"	13.35
QS400	4"	13.95
QS500	5"	15.65
QS600	6 5/8"	17.95
QS800	8 5/8"	20.35
QS1000	10"	21.90
QS1200	12"	23.45
QS1500	15"	28.75

#### QWIK SEAL KIT MULTI PURPOSE

PART #	DESCRIPTION	LIST
QSMP103	1/2" - 1" x 3"	14.10
QSMP104	1 1/4" - 1 1/2" x 4"	17.95
QSMP205	2" x 5"	19.70
QSMP305	3" x 5"	19.70
QSMP405	4" x 5"	20.65
QSMP505	5" x 5"	22.10
QSMP605	6" x 5"	28.15
QSMP606	6" x 6"	29.70
QSMP805	8" x 5"	28.65

#### QWIK SEAL KIT SPHERICAL

PART #	DESCRIPTION	LIST
QS-S050	1/2" x 1 1/4"	8.65
QS-S075	3/4" x 1 1/2"	8.95
QS-S100	1" x 1 3/4"	9.30
QS-S125	1 1/4" x 1 3/4"	9.30
QS-S150	1 1/2" - 2"	9.60
QS-S200	2" x 2"	10.75
QS-S250	2 1/2" x 2"	10.75
QS-S304	3" x 4"	14.80
QS-S404	4" x 4"	15.65
QS-S504	5" x 4"	16.60
QS-S604	6" x 4"	18.75
QS-S804	8" x 4"	19.90
QS-S1004	10" x 4"	21.25
QS-S1204	12" x 4"	22.60



1/2" - 2" PIPE



#### UV ACTIVATED QUICK PATCHES

PART #	SIZE	LIST
QP2x3	2" x 3" Mini	10.40
QP3x6	3" x 6"	15.00
QP6x9	6" x 9"	83.25
QP9x12	9" x 12"	105.00
QW3x108	Wrap 3" x 108"	

- Cut, Peel, Stick. Flexible
- Cures with Sunlight or UV Flashlight, 5-60 Min.
- Resistant to chemicals, solvents and oils.

#### PIPE REPAIR CLAMPS

PART #	LENGTH & SIZE	LIST
PRC-3050	3" x 1/2"	8.40
PRC-3075	3" x 3/4"	9.20
PRC-3100	3" x 1"	10.85
PRC-3125	3" x 1 1/4"	12.85
PRC-3150	3" x 1 1/2"	15.05
PRC-3200	3" x 2"	17.55
PRC-6075	6" x 3/4"	18.70
PRC-6100	6" x 1"	20.90
PRC-6150	6" x 1 1/2"	29.20
PRC-6200	6" x 2"	32.55

#### 15" WIDE - 6 BOLT REPAIR CLAMP

PART #	RANGE	LIST
CL1-3.7	3.45" - 3.70"	
CL1-4.85	4.45" - 4.85"	
CL1-6.35	5.95" - 6.35"	
CL1-7	6.60" - 7.00"	
CL1-8.35	7.95" - 8.35"	
CL1-9	8.60" - 9.00"	
CL1-10.35	9.95" - 10.35"	
CL1-11.1	10.70" - 11.10"	
CL1-12.5	12.10" - 12.50"	
CL1-13.1	12.70" - 13.10"	

### CLAMPETTE PIPE PATCH CLAMP

#### IPS



#### 3" WIDE - ONE BOLT - IPS

PART #	SIZE	LIST
330-083	2"	20.65
330-103	3"	23.90
330-113	4"	26.75
330-123	5"	29.10
330-133	6"	30.60
330-143	8"	35.85
330-153	10"	65.00
330-163	12"	68.55

#### 6" WIDE - TWO BOLT - IPS

PART #	SIZE	LIST
330-086	2"	40.60
330-106	3"	47.80
330-116	4"	53.60
330-126	5"	58.25
330-136	6"	61.15
330-146	8"	71.70
330-156	10"	125.55
330-166	12"	137.25

#### 9" WIDE - 3 BOLT - IPS

PART #	SIZE	LIST
330-089	2"	83.80
330-109	3"	99.15
330-119	4"	107.10
330-129	5"	114.70
330-139	6"	120.30
330-149	8"	144.00
330-159	10"	233.05
330-169	12"	255.75

#### 12" WIDE - 4 BOLT - IPS

PART #	SIZE	LIST
330-0812	2"	111.75
330-1012	3"	132.20
330-1112	4"	141.75
330-1212	5"	152.95
330-1312	6"	160.35
330-1412	8"	191.00
330-1512	10"	310.70
330-1612	12"	340.95
330-1812	16"	398.25
330-1912	18"	447.70

#### OD



#### 3" WIDE - ONE BOLT - OD

PART #	SIZE	LIST
330-083-OD	2"	20.65
330-103-OD	3"	23.90
330-113-OD	4"	26.80
330-123-OD	5"	29.10
330-133-OD	6"	30.60
330-143-OD	8"	35.85

#### 6" WIDE - TWO BOLT - OD

PART #	SIZE	LIST
330-086-OD	2"	40.90
330-106-OD	3"	47.80
330-116-OD	4"	53.60
330-126-OD	5"	58.25
330-136-OD	6"	61.15
330-146-OD	8"	71.70
330-156-OD	10"	125.55
330-166-OD	12"	137.25

#### 12" WIDE - 4 BOLT - OD

PART #	SIZE	LIST
330-0812-OD	2"	111.75
330-1212-OD	5"	152.91
330-1312-OD	6"	160.35
330-1412-OD	8"	191.00
330-1512-OD	10"	310.70
330-1612-OD	12"	341.00

#### 9" WIDE - 3 BOLT - OD

PART #	SIZE	LIST
330-119-OD	4"	107.10
330-139-OD	6"	120.30
330-149-OD	8"	144.00

### FULL WRAP CLAMPS



	MATCO-NORCA MODEL NUMBER	NOMINAL PIPE SIZE (INCHES)	CLAMP O.D. RANGE (INCHES)
<b>331 Full Wrap Clamp</b>			
<i>For Nominal Pipe Size</i>			
<b>Number of Bolts Per Clamp</b>	331-263-(W)	2"	2.32 - 2.63
	331-287-(W)	2-1/4"	2.57 - 2.87
6" Length Clamp 2 Bolts	331-300-(W)	2-1/4" - 2-1/2"	2.70 - 3.00
8" Length Clamp 2 Bolts	331-325-(W)	3"	2.95 - 3.25
	331-370-(W)	3"	3.40 - 3.70
10" Length Clamp 3 Bolts	331-400-(W)	3" - 4"	3.71 - 4.00
12" Length Clamp 3 Bolts (Under 10" OD) 4 Bolts (Over 10" OD)	331-475-(W)	4"	4.45 - 4.75
	331-515-(W)	4"	4.75 - 5.15
16" Length Clamp 4 Bolts (Under 10" OD) 5 Bolts (Over 10" OD)	331-535-(W)	4" - 5"	4.95 - 5.35
	331-560-(W)	4" - 5"	5.20 - 5.60
20" Length Clamp 5 Bolts (Under 10" OD) 7 Bolts (Over 10" OD)	331-635-(W)	6"	5.95 - 6.35
	331-695-(W)	6"	6.55 - 6.95
24" Length Clamp 6 Bolts (Under 10" OD) 8 Bolts (Over 10" OD)	331-724-(W)	6"	6.84 - 7.24
	331-745-(W)	6"	7.05 - 7.45
30" Length Clamp 10 Bolts (Always)	331-785-(W)	6"	7.45 - 7.85
	331-835-(W)	8"	7.95 - 8.35
	331-899-(W)	8"	8.59 - 8.99
	331-940-(W)	8"	9.00 - 9.40
	331-970-(W)	8"	9.30 - 9.70
	331-1015-(W)	8" - 10"	9.75 - 10.15
	331-1105-(W)	10"	10.65 - 11.05
	331-1144-(W)	10"	11.04 - 11.44
	331-1175-(W)	10"	11.35 - 11.75
	331-1215-(W)	10"	11.75 - 12.15
	331-1235-(W)	10"	11.95 - 12.35
	331-1305-(W)	12"	12.65 - 13.05
	331-1350-(W)	12"	13.10 - 13.50
	331-1380-(W)	12"	13.40 - 13.80
	331-1410-(W)	12" - 14"	13.70 - 14.10
	331-1440-(W)	12" - 14"	14.00 - 14.40



PORTABLE WATER LOADING STAND

7' FROM RISER



12' HEIGHT AT SPOUT

6' SQUARE BASE

WATER STAND

PART #	SIZE AND WEIGHT	LIST
710834	4" 80#	
710836	6" 125#	
710838	8" 165#	