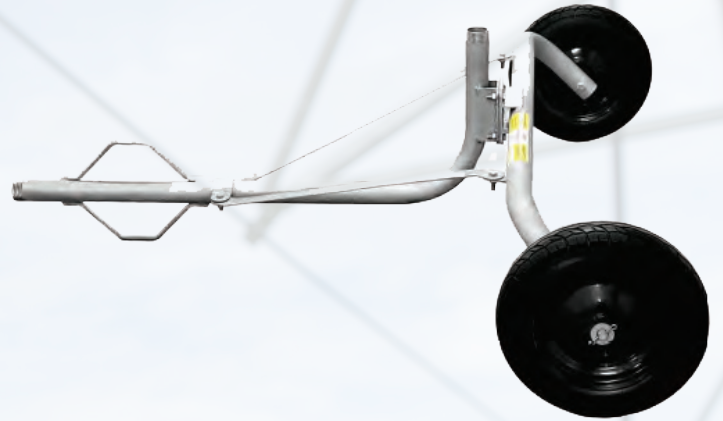


2024 SPRINKLERS AND GUN CARTS



PURVEYORS OF THE FINEST IRRIGATION SUPPLIES



BAFSCO™ GUN CART AND ACCESSORIES



**BAFSCO™
GUN CART**

BAFSCO™ GUN CARTS AND ACCESSORIES

Part#	DESCRIPTION	SPRINKLER	INLET	OUTLET	HEIGHT	WHEEL BASE	LB	LIST	
Gun Carts									
GC	Assembly	1" and 1 1/4"	2" MPT	1 1/4" FPT	33.5"	36.5"	35#	310.00	
GC-50	Assembly	1/2" and 3/4"	3/4" FPT	3/4" FPT	20.5"	23"		220.00	
GC-50-Kit	Assy.w/Sprinkler	1/2" and 3/4"	3/4" FPT	3/4" FPT	20.5"	23"		245.00	
Accessories									
GCHPR	2" x 100' Red PVC Hose, 80 psi w/C & E Aluminum Camlocks								166.70
GCHP-50	2" x 50' Blue PVC Hose, 80 psi w/C & E Aluminum Camlocks								130.00
125B100	1 1/4" MPT x 1" FPT Zamac Bushing								4.50
75B50	3/4" MPT x 1/2" FPT Zamac Bushing								2.80
320AA	2" Male Aluminum Camlock Adapter								5.95
3020AA	2" FPT x 3" Male Aluminum Camlock Adapter								30.00
STBHA	1/2" MPT x 3/4" Female Garden Hose Swivel Brass Adapter								4.30
GCT	14" x 1.75" Replacement Tire Assembly								35.00
GCT-50	8" Replacement Tire								20.00



Light Weight
Easy to Roll
Wide Stable Stance



SPRAY KING SPRINKLER STAND

PART#	DESCRIPTION	LIST
GCSK	Gun Cart Spray King Blue Epoxy	Call
	3" Male CR Hook and Latch Inlet	
	2 1/2" MPT Outlet	
	5' Wheels Included (Sprinkler not included)	

X-CART™ SUPER-DUTY SPRINKLER CARTS

AQUA BURST

3/4" Stainless Steel Riser

High-strength design for years of service
Assembles Easily in Just Minutes



FOR 3/4" & 1/2" SPRINKLERS

PART #	DESCRIPTION	LIST
X-CART.5	Garden Cart w/ X25ED-S 1/2" Sprinkler	83.00
XCART-.5	Garden Cart less Sprinkler	69.00

AQUA BURST



Features 100% Hot-Dip Galvanized High-Strength
Double Truss Design
Solid Construction Tires

FOR 3/4", 1", 1 1/4", 1 1/2" AND 2" SPRINKLERS

PART #	DESCRIPTION	LIST
XCART-1	Ranchette Cart for 3/4" & 1" Sprinklers, 1" Frame, 4.1 x 3.5 x 4 Tires	237.07
XCART-1.5	Ranchers Cart for 1" to 1 1/4" Sprinkler, 1 1/2" frame, 13 x 3.25 x 8 Tires	314.28
XCART-2	Field Gun Cart for 1 1/4" to 2" End Gun, 2" Frame, 16" Tires	528.07
Replacement Tires		
1-XCS-TIRE	4.10/3.50-4 PU Wheel, Black, 74MM Hub Length, 16MM Center Hub Hole	31.83
1.5-XCS-TIRE	13X3.25-8 PU Wheel, Black, 90MM Hub Length, 16MM Bushing	41.40
2-XCS-TIRE	16X6.5-8 PU Wheel, Black, 104MM Hub Length, 20MM Nylon Bushing	86.47

ADAPTERS



PART #	DESCRIPTION	LIST
EP3OUT-75	3" End Plug with 3/4" FPT Outlet	24.80
EP3OUT-1	3" End Plug with 1" FPT Outlet	24.80
EP3OUT-1.5	3" End Plug with 1 1/2" FPT Outlet	24.80
GCHA	3" End Plug with 2" FPT Outlet	24.80
GC4HA	4" End Plug with 2" FPT Outlet	44.80
EP4OUT-75	4" End Plug with 3/4" FPT Outlet	44.80

AQUA BURST

IMPACT SPRINKLERS



AL1023

PART #	SIZE	LIST
AL1023	1/2"	10.90
Details See Page 15		



X25EDS

PART #	SIZE	LIST
X25EDS	1/2"	16.20
Details See Page 16		



AL30

PART #	SIZE	LIST
AL30	3/4"	17.36
Details See Page 19		



HF20

PART #	SIZE	LIST
HF20-18	1/2" w/1/8" Nozzle	15.40
HF20-764	1/2" w/7/64" Nozzle	15.40
Details See Page 17		



HF20W

PART #	SIZE	LIST
HF20W	1/2" Wedge Drive	14.40
Details See Page 18		



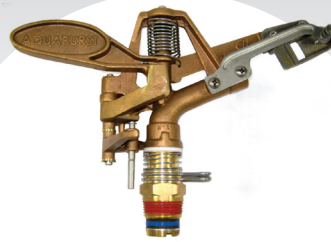
HF30

PART #	SIZE	LIST
HF30	3/4"	19.98
HF30D	3/4" Dual Nozzle	22.12
HF30AL	3/4"	19.98
Details See Page 21		



X35ED

PART #	SIZE	LIST
X35ED	3/4" Part Circle	47.34
Details See Page 22		



X65 SERIES

PART #	SIZE	LIST
X65EDS	1" Part Circle	152.00
X65F	1" Full Circle	132.00
Details See Page 23		



X85 SERIES

PART #	SIZE	LIST
X85ED18	1 1/4" 18° Part Circle	238.00
X85ED24	1 1/4" 24° Part Circle	238.00
X85F	1 1/4" 24° Full Circle	198.00
See page 24		

AQUA BURST

PIVOT SPRINKLERS



X100 END GUN™ THUNDERBOLT™

PART #	DESCRIPTION	LIST
X10018	18° Pivot End Gun	863.30
X10024	24° Movable and Solid Set	863.30
X10043	43° Dust Control and Mining	833.30
X10018SS	18° Stainless Steel End Gun	1,182.43
X10024SS	24° Stainless Steel End Gun	1,182.43
Details See Page 7		



X75 END GUN™ BLACK BIRD™

PART #	DESCRIPTION	LIST
X75-18	18° End Gun	250.26
X75-24	24° End Gun	250.26
Details See Page 11		



RADIUS™ PIVOT SPRINKLER

PART #	DESCRIPTION	LIST
RADIUS-BK	Black Plate - Multi Size Droplets	Call
RADIUS-BL	Blue Plate - Large Droplets Low Angle	
RADIUS-P	Purple Plate - Small Droplets	
Details See Pivot Section Page		



XPR PRESSURE REGULATOR

PART #	DESCRIPTION	LIST
XPR-6	3/4" 6 psi Pressure Regulator	9.53
XPR-10	3/4" 10 psi Pressure Regulator	9.53
XPR-15	3/4" 15 psi Pressure Regulator	9.53
XPR-20	3/4" 20 psi Pressure Regulator	9.53



AXIS™ END OF PIVOT SPRINKLER

PART #	DESCRIPTION	LIST
AXIS-F	Axis-F Sprinkler with Nozzle Set	134.83
AXIS-S	Axis-S Sprinkler with Nozzle Set	134.83
Details See Page 13 and 14		

REVOLVER™ SPRINKLERS

- 3/4" Brass Full Circle
- 26° Trajectory
- Single Nozzle
- Brass Drive Arm for Longevity and performance



R208

REVOLVER
SPRINKLERS™

- Excellent for Hand Line Wheel Line and Solid Set Applications
- 60 per Case, 30 per Inner Carton

PART #	SIZE	LIST
R208	3/4"	18.98

MINI CANNONS



WR-57 1 1/4" FPT 30° Trajectory
Performance Chart

PSI	Nozzle 7mm (.28")		Nozzle 8mm (.31")		Nozzle 9mm (.35")		Nozzle 10mm (.39")		Nozzle 12mm (.47")	
	GPM	Diameter	GPM	Diameter	GPM	Diameter	GPM	Diameter	GPM	Diameter
35	12	112	17	116	21	120	26	124	37	130
40	13	116	18	122	22	124	28	130	40	134
45	14	120	19	126	24	128	29	136	42	138
50	15	124	20	128	25	132	31	138	45	144
55	16	126	21	132	26	136	33	142	47	150

MINI CANNONS

PART #	SIZE	LIST
WR-57	1 1/4"	115.00
WR-67	1 1/2"	180.00

WR-67 1 1/2" FPT 25° Trajectory
Performance Chart

PSI	Nozzle 12mm (.47")		Nozzle 14mm (.55")		Nozzle 16mm (.63")		Nozzle 18mm (.71")	
	GPM	Diameter	GPM	Diameter	GPM	Diameter	GPM	Diameter
29	40	130	52	138	65	144	-	-
44	48	156	63	164	80	170	100	184
58	56	176	73	190	93	196	115	202
73	62	196	81	202	103	216	128	224
88	-	-	-	-	-	-	140	236

Senninger® WOBBLER SPRINKLERS



MINI-WOBLER™

PART #	SIZE	LIST
WOBXXM200	1/2" MPT Upright	3.25
WOBXXM240H	1/2" High Angle	4.30
WOBXXM250	1/2" Inverted	3.25

XCEL-WOBLER™

PART #	SIZE	LIST
XWOBXXB3HALD	3/4" High Angle	9.00
XWOBXXB2HALD	1/2" High Angle	9.00
XWOBXXB3MA	3/4" Mid Angle	9.00
XWOBXXB2MA	1/2" Mid Angle	9.00

WOBLER®

PART #	SIZE	LIST
WOBXXB3	3/4" Standard Angle	9.00
WOBXXB2	1/2" Standard Angle	9.00
WOBXXB3LA	3/4" Low Angle	9.00
WOBXXB2LA	1/2" Low Angle	9.00

Senninger®

IMPACT SPRINKLERS



SENNINGER® 20 SERIES

PART #	SIZE	LIST
2009H	1/2" 9°, 3/32" - 9/64"	10.05
2014H	1/2" 14°, 3/32" - 9/64"	10.05
2023H	1/2" 23°, 3/32" - 9/64"	10.05



SENNINGER® 20 COMPACT

PART #	SIZE	LIST
2023HBS13M	3/4" Male	10.05
2023HBS13F	3/4" Female	10.05
9/64", 5/32", 11/64" & 3/16" Nozzles		



SENNINGER® WEDGEDRIVE™

PART #	SIZE	LIST
2009W	1/2" 9°, 5/64" - 9/64"	10.05
2014W	1/2" 9°, 5/64" - 9/64"	10.05
2023W	1/2" 9°, 5/64" - 9/64"	10.05



SENNINGER® 30 SERIES

PART #	SIZE	LIST
301213	3/4" 12°	13.35
302313	3/4" 23° Single Noz.	13.35
302323	3/4" 23° Dual Noz.	15.25
7/64" - 5/32" Nozzles		



SENNINGER® 40 SERIES

PART #	SIZE	LIST
401213	3/4" 12°	13.35
402313	3/4" 23° Single Noz.	13.35
402323	3/4" 23° Dual Noz.	15.25
5/32" - 7/32" Nozzles		



SENNINGER® 50 SERIES

PART #	SIZE	LIST
501213	3/4" 12°	13.35
502313	3/4" 23° Single Noz	13.35
502323	3/4" 23° Dual Noz	15.25
13/64" - 9/32" Nozzles		



SENNINGER® PART CIRCLE

PART #	SIZE	LIST
3123PC	3/4" 2.42-5.17 gpm	30.45
4123PC	3/4" 3.82-8.80 gpm	30.45
5123PC	3/4" 6.50-16.10 gpm	30.45



SENNINGER® 70 SERIES

PART #	SIZE	LIST
7025R1	1" Single Nozzle	63.25
7025R2	1" Dual Nozzle	65.15
7/32" - 3/8" Nozzle		



SENNINGER® 80 SERIES

PART #	SIZE	LIST
8025HR1	1 1/4" Single Nozzle	149.25
8025HR2	1 1/4" Dual Nozzle	151.15
3/8" - 5/8"		

X100 END GUN™ THUNDERBOLT™

FEATURES:

- 37 - 290 GPM, 35 - 100 psi
- 18° Trajectory - Pivot End Gun
- 24° Trajectory - Movable and Solid Set
- 43° Trajectory - Dust Control and Mining
- Continuous Forward and Reverse Speeds
- Adjustable Control from 30° to 330°

Designed and Built In Rupert, Idaho, USA
3-Year Limited Warranty

Raven-Smart™
Technology of Modern Design™



X10018



X10018SS

X100 END GUN™

PART NO.	DESCRIPTION	LIST
X10018	18° Pivot End Gun	863.30
X10024	24° Movable and Solid Set	863.30
X10043	43° Dust Control and Mining	863.30
X10018SS	18° Stainless Steel End Gun	1,182.43
X10024SS	24° Stainless Steel End Gun	1,182.43
X100V18	18° End Gun with Valve	951.57
X100V24	24° End Gun with Valve	951.57
X100V43	43° End Gun with Valve	951.57

Nozzle Not Included (Page

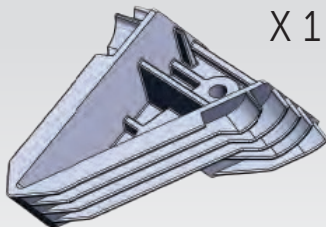
Advantages

- Comes standard with both high and low force drive vanes for superior performance of small to large nozzles
- Powder-coated aluminum drive arm
- All stainless steel ball bearings
- Stainless-steel nozzle mount and stud
- Fully adjustable shift box
- Solid brass reversing stops
- Taper ring nozzles
- All aluminum parts are epoxy coated or fully anodized
- 100% Rebuildable in our factory or your shop! (Parts Page)

Warranty and Disclaimer

XCAD USA™ /Aqua Burst™ X-100 End Gun™ sprinklers are warranted for one year from date of manufacture to be free of defective materials and workmanship when used within the working specifications for which the product was designed and intended and under normal use and service. This warranty includes an additional four (4) year service plan (from date of manufacture) for repair of any non-functioning X-100 End Gun™ due to defective materials and workmanship or excessive wear when used in normal working conditions. The manufacturer's liability under this warranty is limited solely to repair of defective parts and labor and the manufacturer will not be liable for any freight, crop loss or other consequential damages resulting from defects, excessive wear or breach of warranty. This warranty is expressly in lieu of all other warranties, express or implied, including the warranties of merchantability and/or liabilities of the manufacturer. No agent, employee or representative of the manufacturer has the authority to waive, alter or add to the provisions of this warranty, nor make any representations or warranty not contained herein. **XCAD USA™** /Aqua Burst™ reserves the right to define this warranty or any other warranty as **XCAD USA™** /Aqua Burst™ sees fit.

AQUA BURST® X100 PERFORMANCE CHART



X100-51H



X100-51L
(INSTALLED)

RADIUS - GPM X10018
 HIGH FORCE LARGE DRIVE VANE LOW FOR FORCE SMALL DRIVE VANE

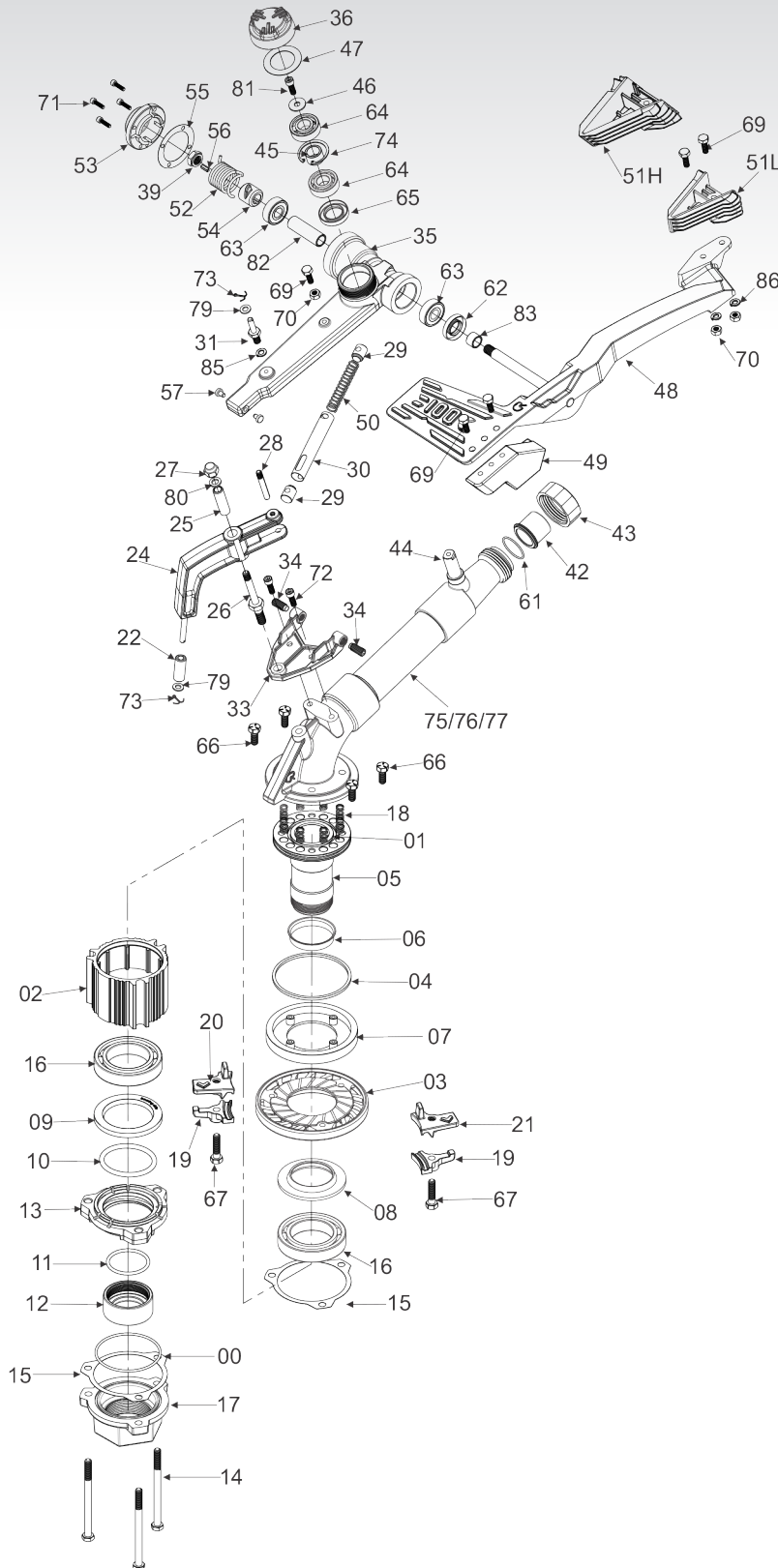
PSI	.4" Nozzle	.45" Nozzle	.5" Nozzle	.55" Nozzle	.6" Nozzle	.65" Nozzle	.70" Nozzle	.75" Nozzle	.80" Nozzle	.85" Nozzle	.90" Nozzle	.95" Nozzle	1." Nozzle
40	74 - 26	79 - 35	85 - 42	90 - 52	95 - 61	99 - 71	102 - 84	107 - 95	111 - 108	119 - 123	122 - 139	128 - 154	-
45	77 - 28	83 - 37	88 - 44	93 - 55	98 - 64	102 - 76	106 - 87	110 - 101	115 - 114	124 - 131	126 - 146	132 - 162	136 - 180
50	80 - 29	86 - 39	92 - 46	96 - 58	101 - 68	105 - 80	110 - 92	114 - 105	118 - 119	127 - 138	131 - 151	135 - 169	140 - 187
55	82 - 31	89 - 40	95 - 49	99 - 61	104 - 72	109 - 84	113 - 97	117 - 111	122 - 125	131 - 145	134 - 160	139 - 178	144 - 196
60	84 - 32	92 - 41	97 - 51	102 - 63	108 - 78	112 - 88	117 - 101	119 - 116	125 - 132	134 - 150	138 - 167	143 - 186	148 - 205
65	86 - 34	94 - 43	100 - 54	105 - 65	110 - 80	116 - 93	121 - 105	123 - 120	129 - 137	139 - 157	141 - 175	147 - 195	153 - 214
70	87 - 36	96 - 44	102 - 55	108 - 68	111 - 81	119 - 98	125 - 110	126 - 125	133 - 142	141 - 163	145 - 181	152 - 202	158 - 223
75	89 - 37	100 - 46	105 - 57	110 - 70	115 - 84	122 - 100	127 - 114	130 - 130	136 - 148	141 - 163	149 - 187	156 - 209	162 - 230
80	91 - 39	103 - 48	108 - 59	111 - 72	118 - 86	125 - 102	130 - 118	134 - 133	138 - 152	144 - 168	152 - 193	159 - 215	165 - 237
85	93 - 40	106 - 50	110 - 61	113 - 75	121 - 89	129 - 104	134 - 120	138 - 137	141 - 157	147 - 174	154 - 199	161 - 222	167 - 244
90	94 - 42	109 - 52	112 - 63	116 - 77	124 - 93	133 - 107	137 - 124	143 - 142	145 - 162	150 - 180	157 - 206	163 - 228	169 - 251
95	97 - 43	112 - 54	115 - 65	118 - 80	128 - 96	137 - 111	141 - 129	147 - 146	149 - 167	152 - 185	159 - 212	165 - 235	172 - 259
100	99 - 45	115 - 56	118 - 67	121 - 83	131 - 99	141 - 115	146 - 133	151 - 150	152 - 172	155 - 191	161 - 217	168 - 242	174 - 265

X10024

RADIUS - GPM GRAY BLACK
 HIGH FORCE LARGE DRIVE VANE LOW FOR FORCE SMALL DRIVE VANE

PSI	.4" Nozzle	.45" Nozzle	.5" Nozzle	.55" Nozzle	.6" Nozzle	.65" Nozzle	.70" Nozzle	.75" Nozzle	.80" Nozzle	.85" Nozzle	.90" Nozzle	.95" Nozzle	1." Nozzle
40	79 - 28	85 - 37	91 - 45	96 - 55	101 - 65	105 - 76	109 - 89	114 - 101	118 - 115	127 - 131	130 - 148	136 - 164	-
45	82 - 30	89 - 39	94 - 47	99 - 58	104 - 68	109 - 81	113 - 93	118 - 107	122 - 127	132 - 139	135 - 155	140 - 172	145 - 191
50	85 - 31	92 - 41	98 - 49	103 - 62	107 - 72	112 - 85	117 - 98	122 - 112	126 - 127	136 - 147	139 - 161	144 - 180	149 - 199
55	88 - 33	95 - 43	101 - 52	106 - 65	111 - 77	116 - 89	121 - 103	125 - 118	130 - 133	139 - 154	143 - 170	148 - 189	153 - 209
60	90 - 34	98 - 44	104 - 54	109 - 67	115 - 83	120 - 94	125 - 107	127 - 123	134 - 140	143 - 160	147 - 178	152 - 198	157 - 218
65	91 - 36	100 - 46	107 - 57	112 - 69	117 - 85	123 - 99	129 - 112	131 - 128	138 - 146	148 - 167	150 - 186	157 - 207	163 - 228
70	93 - 38	103 - 47	109 - 59	115 - 72	118 - 86	127 - 104	133 - 117	135 - 133	142 - 151	150 - 173	154 - 193	162 - 215	169 - 237
75	95 - 39	107 - 49	112 - 61	117 - 74	122 - 89	130 - 106	136 - 121	139 - 138	145 - 157	154 - 179	158 - 199	166 - 222	173 - 245
80	97 - 41	110 - 51	115 - 63	118 - 77	126 - 92	133 - 108	138 - 125	143 - 142	147 - 162	156 - 185	162 - 205	169 - 229	176 - 252
85	99 - 43	113 - 53	117 - 65	121 - 80	129 - 95	137 - 111	143 - 128	147 - 146	151 - 167	160 - 191	164 - 212	171 - 236	178 - 260
90	101 - 45	116 - 55	119 - 67	123 - 82	132 - 99	142 - 114	146 - 132	152 - 151	154 - 172	162 - 197	167 - 219	174 - 243	180 - 267
95	103 - 46	119 - 57	123 - 69	126 - 85	136 - 102	146 - 118	151 - 137	156 - 155	158 - 178	165 - 203	169 - 225	176 - 250	183 - 275
100	105 - 48	122 - 60	126 - 71	129 - 88	139 - 105	150 - 122	155 - 141	161 - 160	162 - 183	167 - 208	172 - 231	179 - 257	185 - 282

X100 END GUN PARTS



X100 END GUN™ PARTS

PART NO	DESCRIPTION	LIST
X100-00	Base Nut O-Ring -150 (Orange)	1.05
X100-01	O-Ring -226 (Light Pink)	.45
X100-02	Bearing Housing	107.70
X100-03	Upper Bearing Carrier	121.00
X100-04	Brake Seal	6.25
X100-05	Bearing Stem	70.20
X100-06	Seal Sleeve	19.05
X100-07	Plastic Brake Disc	5.50
X100-08	Upper Bearing Seal (Blue)	3.05
X100-09	Lower Bearing Seal (Purple)	4.25
X100-10	O-Ring -224 (Dark Blue)	3.90
X100-11	O-Ring -331 (Green)	4.05
X100-12	Chromed Stem Nut	73.15
X100-13	Bearing Base Carrier	109.60
X100-14	Bearing Hex Bolt	7.65
X100-15	Housing Gasket	1.45
X100-16SS	Ball Bearing 6010 Stainless Steel	59.10
X100-17	Base Nut Flange	42.95
X100-18	Friction Spring	.55
X100-19	Reverse Stop Bottom	17.30
X100-20	Reverse Stop Left	29.05
X100-21	Reverse Stop Right	29.10
X100-22	Swing Arm Bushing	8.15
X100-23	Arm Spring Sleeve	11.60
X100-24	Reverse Swing Arm Assembly	46.45
X100-26	Reverse Arm Stud	29.45
X100-27	Brass Stud Nut	7.80
X100-28	Threaded Swing Arm Top Pin	3.75
X100-29	Trip Spring Follower	1.45
X100-30	Spring Guide Pipe	8.20
X100-31	Shift Arm Stud	9.35
X100-33	Shift Box SS	46.00
X100-34	Shift Box Set Screw	3.70
X100-35	Shift Arm	48.75
X100-36	Bearing Boss Cover	9.65
X100-39	Arm Nut SS	5.55
X100-43	Nozzle Retainer Nut	47.00
X100-44	Arm Mount Stud	28.20
X100-45	Shift Arm Spacer	9.15
X100-46	Bearing Washer SS	3.05
X100-47	Arm Bearing Cap Gasket	2.60
X100-48	Single Strut Arm	210.65
X100-49	Single Strut Arm Weight	49.80
X100-50	Trip Spring SS	1.75
X100-51L	Low Force Drive Vane	16.00
X100-51H	High Force Drive Vane	15.00
X100-52	Arm Spring SS	5.50
X100-53	Arm Spring Cover	11.40
X100-54	Spring Pawl Brass	9.95
X100-55	Spring Cover Gasket	1.00
X100-56	Pawl Key Brass	1.40
X100-57	Brass Impact Button	1.95
X100-61	Nozzle O-Ring -025 (Yellow)	.15
X100-62	Arm Seal (Red)	14.65
X100-63	Arm Bearing 6201 SS	14.00
X100-64	Shift Arm Bearing 6202 SS	14.25
X100-65	Shift Arm Seal (Orange)	15.05
X100-66	Bolt 5/16"-18 x 5/8" SS	1.15
X100-67	Bolt 5/16"-18 x 1 1/4" SS	1.15
X100-69	Bolt 1/4" x 1" SS	5.90
X100-70	Nut 1/4" SS	2.50
X100-71	Cap Screw #8 x 5/8" SS	.55
X100-72	Cap Screw 1/4" x 1/2" SS	1.65
X100-73	Cotter Pin	.30
X100-74	Snap Ring 1 3/8" SS	1.35
X100-75	X100 18° Elbow Body Assembly	324.45
X100-76	X100 24° Elbow Body Assembly	324.45
X100-77	X100 43° Elbow Body Assembly	324.45
X100-79	Brass Washer	.45
X100-80	Rubber Washer 14mm x 8.25mm	.45
X100-81	1/4"-20 x 1/2" Buttonhead Screw SS	.75
X100-82	Long Shaft Sleeve	3.95
X100-83	Short Shaft Sleeve Hard Chromed	3.95
X100-85	Split Lock Washer 5/16" SS	.35
X100-87	Fender Washer 1/4" x 1 1/2" SS	1.10
X100-88	M6 Fender Washer A2 SS	.70

X100 END GUN™ PARTS



X100 BEARINGS

PART NO.	DESCRIPTION	LIST
X100BA	Complete Assembly	433.10
X100BASS	Stainless Steel Assembly	549.00

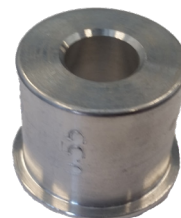
Also fits Nelson™ SR100 and SR75

Anodized aluminum body and bearing stem.

One piece brass bearing carrier with

Aquaburst™ exclusive UltraSlip impregnated o-ring

Heavy duty waste water bearing assembly includes stainless steel ball bearings, bearing stem, bearing nut, bearing carrier and base flange



X100 END GUN™ NOZZLES

PART NO.	DESCRIPTION	LIST
X100-42-4	26-45 gpm	14.16
X100-42-45	35-46 gpm	14.16
X100-42-5	42-67 gpm	14.16
X100-42-55	52-83 gpm	14.16
X100-42-6	61-99 gpm	14.16
X100-42-65	71-115 gpm	14.16
X100-42-7	84-133 gpm	14.16
X100-42-75	95-150 gpm	14.16
X100-42-8	108-172 gpm	14.16
X100-42-85	123-191 gpm	14.16
X100-42-9	139-217 gpm	14.16
X100-42-95	154-242 gpm	14.16
X100-42-1	180-265 gpm	14.16

Also fits Nelson™ SR75 Big Gun™



REPLACEMENT NOZZLE FITS NELSON™ SR100

PART NO.	DESCRIPTION	LIST
NOZSR100-4		17.80
NOZSR100-45		17.80
NOZSR100-5		17.80
NOZSR100-55		17.80
NOZSR100-6		17.80
NOZSR100-65		17.80
NOZSR100-7		17.80
NOZSR100-75		17.80
NOZSR100-8		17.80
NOZSR100-85		17.80
NOZSR100-9		17.80
NOZSR100-95		17.80
NOZSR100-1		17.80



SEAL MATIC® PIVOT END GUN VALVE

PART NO.	DESCRIPTION	LIST
SMVX100PEG	2" X100 End Gun Valve	135.80
SMVX100WS	Valve w/Solenoid	428.00

SMVX100PEG works with Aqua Burst™ X100 and TM Nelson2™ SR100 and SR75

Performance chart see valve section page 18.

X75 END GUN™ BLACK BIRD™

Raven-Smart™

Technology of Modern Design™



X100 END GUN™

PART NO.	DESCRIPTION	LIST
X75-18	18° End Gun	250.26
X75-24	24/27° End Gun	250.26
Nozzle Set Included		
X75-NOZSET	8 Piece Replacement Nozzle Set	48.00
X75NOZ-.3	.3 Nozzle	7.20
X75NOZ-.35	.35 Nozzle	7.20
X75NOZ-.4	.4 Nozzle	7.20
X75NOZ-.45	.45 Nozzle	7.20
X75NOZ-.5	.5 Nozzle	7.20
X75NOZ-.55	.55 Nozzle	7.20
X75NOZ-.6	.6 Nozzle	7.20
X75NOZ-.65	.65 Nozzle	7.20

Advantages

- Comes standard with 8 nozzles 3, 3.5, 4, 4.5, 5, 5.5, 6 and 6.5
- Powder-coated nozzle mount, drive arm and body
- 18° trajectory pivot end gun
- 27° trajectory movable solid set
- 18 - 100 gpm, 40 - 90 psi
- Full and part circle
- Replaceable spoon
- 2" NPT male thread, 1 1/2" NPT female thread
- High-quality composite bearings

Warranty and Disclaimer

XCAD USA /Aqua Burst™ X-75 End Gun™ sprinklers are warranted for one year from date of manufacture to be free of defective materials and workmanship when used within the working specifications for which the product was designed and intended and under normal use and service. The manufacturer's liability under this warranty is limited solely to repair of defective parts and labor and the manufacturer will not be liable for any freight, crop loss or other consequential damages resulting from defects, excessive wear or breach of warranty. This warranty is expressly in lieu of all other warranties, express or implied, including the warranties of merchantability and or liabilities of the manufacturer. No agent, employee or representative of the manufacturer has the authority to waive, alter or add to the provisions of this warranty, nor make any representations or warranty not contained herein. **XCAD USA** /Aqua Burst™ reserves the right to define this warranty or any other warranty as **XCAD USA** /Aqua Burst™ sees fit.



AQUA BURST® X75 PERFORMANCE CHART

RADIUS - GPM X75 - 18

PSI	.3" Nozzle	.35" Nozzle	.4" Nozzle	.45" Nozzle	.5" Nozzle	.55" Nozzle	.6" Nozzle	.65" Nozzle
20	-	-	-	-	55 - 33	66 - 40	70 - 47	75 - 55
25	-	-	-	-	65 - 37	70 - 44	78 - 53	80 - 62
30	-	-	60 - 26	68 - 33	75 - 40	81 - 48	82 - 57	84 - 68
35	-	-	66 - 28	74 - 35	80 - 43	86 - 52	89 - 62	90 - 73
40	63 - 17	65 - 23	71 - 30	80 - 38	83 - 46	90 - 56	93 - 66	95 - 78
45	65 - 18	70 - 24	78 - 32	84 - 40	87 - 49	91 - 59	96 - 70	99 - 83
50	70 - 19	74 - 26	81 - 33	86 - 42	90 - 52	93 - 62	100 - 74	102 - 87
55	72 - 20	78 - 27	82 - 35	88 - 44	94 - 54	95 - 65	102 - 78	105 - 91
60	73 - 21	80 - 28	84 - 36	92 - 46	97 - 56	100 - 68	105 - 81	108 - 96
65	75 - 21	81 - 29	85 - 38	95 - 48	102 - 59	104 - 71	110 - 85	116 - 99
70	81 - 22	82 - 30	86 - 39	100 - 49	106 - 61	108 - 74	112 - 88	120 - 103
75	83 - 23	84 - 31	87 - 41	108 - 51	112 - 63	113 - 76	115 - 91	122 - 107
80	85 - 24	86 - 32	88 - 42	111 - 53	114 - 65	115 - 79	119 - 94	124 - 110

RADIUS - GPM X75 - 24

PSI	.3" Nozzle	.35" Nozzle	.4" Nozzle	.45" Nozzle	.5" Nozzle	.55" Nozzle	.6" Nozzle	.65" Nozzle
20	-	-	-	-	69 - 33	70 - 40	72 - 47	75 - 55
25	-	-	-	-	71 - 37	75 - 44	77 - 53	80 - 62
30	-	-	74 - 26	75 - 33	77 - 40	79 - 48	84 - 57	87 - 67
35	-	-	78 - 28	80 - 35	82 - 43	84 - 52	86 - 62	95 - 73
40	68 - 17	78 - 23	81 - 30	83 - 38	86 - 46	88 - 56	89 - 66	99 - 78
45	69 - 18	80 - 24	83 - 32	86 - 40	93 - 49	95 - 59	100 - 70	102 - 82
50	70 - 19	85 - 26	90 - 33	91 - 42	95 - 52	100 - 62	104 - 74	107 - 87
55	71 - 20	90 - 27	92 - 35	95 - 44	100 - 54	104 - 65	106 - 78	110 - 91
60	76 - 21	92 - 28	95 - 36	100 - 46	103 - 56	109 - 68	111 - 81	113 - 95
65	80 - 21	96 - 29	98 - 38	103 - 48	109 - 59	115 - 71	116 - 84	117 - 99
70	82 - 22	100 - 30	101 - 39	105 - 49	111 - 61	119 - 74	120 - 88	121 - 103
75	83 - 23	103 - 31	104 - 41	110 - 51	114 - 63	124 - 76	125 - 91	127 - 106
80	85 - 24	107 - 32	108 - 42	115 - 53	117 - 65	125 - 79	127 - 94	130 - 110

AQUA BURST® AXIS-F Field Turbine

End of Pivot Sprinkler

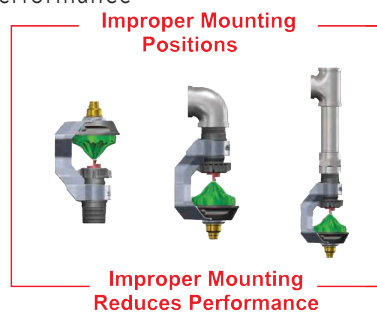
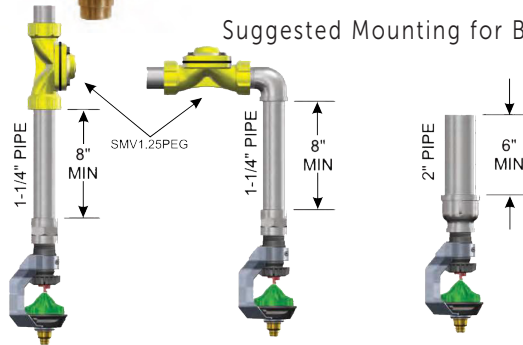
AQUA BURST

Viscous™ Technology

- New 'V-Torque' Brass Dampener
- Easy Nozzle Assembly and Replacement
- 15 to 50 psi Working Pressure
- Use in Conjunction with X100 End Gun Sprinkler for Added Acreage and Improved Coverage
- Comes with a Full Set of Nozzles: 12, 15, 18 & 21
- 1 1/4" NPT Base
- Use in Combination with Seal-Matic® 1 1/4" Valve

AXIS™ END OF PIVOT SPRINKLER

PART NO.	DESCRIPTION	LIST
AXIS-F	Axis-F Sprinkler w/ Nozzle Set	134.83
AXIS-NOZ	Replacement Nozzle Set	9.85



PRELIMINARY PERFORMANCE

Operating Pressure must be 15 psi min. to 50 psi max
GPM - RADIUS

PSI	#12	#15	#18	#21
15	31 - 12.0	32 - 19.0	38 - 29.0	38 - 35.5
20	33 - 13.5	35 - 21.8	41 - 32.8	41 - 41.5
25	35 - 15.3	38 - 24.3	44 - 36.5	44 - 48.0
30	37 - 16.5	41 - 26.5	47 - 39.8	47 - 52.0
35	38 - 17.8	43 - 28.8	49 - 43.0	49 - 55.5
40	39 - 19.0	45 - 30.8	51 - 46.5	51 - 59.5
45	40 - 20.0	46 - 32.3	52 - 49.5	51 - 62.5
50	41 - 21.0	47 - 33.8	53 - 51.0	51 - 65.5

AQUA BURST® AXIS-S Sky Turbine

End of Pivot Sprinkler

AQUA BURST

Viscous™ Technology

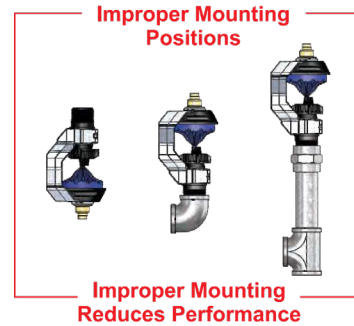
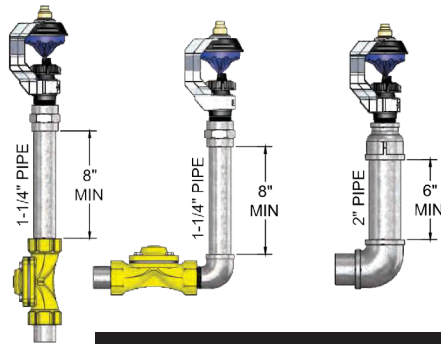
- New 'V-Torque' Brass Dampener
- Easy Nozzle Assembly and Replacement
- 15 to 50 psi Working Pressure
- Use in Conjunction with X100 End Gun Sprinkler for Added Acreage and Improved Coverage
- Comes with a Full Set of Nozzles: 12, 15, 18 & 21
- 1 1/4" NPT Base
- Use in Combination with Seal-Matic® 1 1/4" Valve

AXIS™ END OF PIVOT SPRINKLER

PART NO.	DESCRIPTION	LIST
AXIS-S	Axis-S Sprinkler w/ Nozzle Set	134.83
AXIS-NOZ	Replacement Nozzle Set	9.85



Suggested Mounting for Best Performance



PRELIMINARY PERFORMANCE

Operating Pressure must be 15 psi min. to 50 psi max
GPM - RADIUS

PSI	#12	#15	#18	#21
15	36 - 12.0	37 - 19.0	42 - 29.0	43 - 35.5
20	38 - 13.5	40 - 21.8	42 - 32.8	45 - 41.5
25	41 - 15.3	42 - 24.3	42 - 36.5	47 - 48.0
30	43 - 16.5	44 - 26.5	43 - 39.8	48 - 52.0
35	44 - 17.8	45 - 28.8	45 - 43.0	50 - 55.5
40	44 - 19.0	46 - 30.8	46 - 46.5	50 - 59.5
45	45 - 20.0	46 - 32.3	46 - 49.5	46 - 62.5
50	45 - 21.0	47 - 33.8	47 - 51.0	46 - 65.5

AL1023

1/2" Full Circle, Dual Angle Multi-Xomposite™ Impact Sprinkler

FEATURES:

- Full Circle, Dual Angle, 2 in 1 Impact Sprinkler
- 10° or 23° trajectory
- Includes Plug for Unused Side
- 1/2" MPT Brass Bearing
- 3/8-24 UNF Nozzle Threads
- Nozzle Not Included
- Use DN-1 Nozzles

AQUA BURST 

Raven-Smart
 Technology of Modern Design™



AL1023

AL1023

PART NO.	INNER/CASE/PALLET	LIST
AL1023	50/100/2700	10.90

ADVANTAGES:

- Anodized Aluminum Drive Arm
- Composite Body is Super-Strong and Impact Resistant
- All Brass Bearing
- Stainless Steel Fulcrum Pin, Arm Spring and Bearing Spring
- Suitable for Most Solid Set and Portable Applications
- Ideal for Low Precipitation Rates
- Built in Vane Straightener for Improved Performance
- Highly Efficient Water Distribution
- Made from Foreign and Domestic Parts

AQUA BURST® Performance Chart

Normal Stream Height at 2.5' Above Nozzle at Normal Pressure
 RADIUS - GPM

PSI	3/32"	7/64"	1/8"	9/64"
35	36-1.51	38-2.06	39-2.69	40-3.40
40	36-1.62	39-2.21	39-2.88	40-3.63
45	37-1.71	39-2.32	39-3.04	40-3.86
50	37-1.82	39-2.47	40-3.21	41-4.07
55	38-1.90	40-2.58	40-3.37	41-4.25
60	38-1.99	40-2.70	40-3.52	41-4.45

X25ED

1/2" Part Circle, Heavy Duty Multi-Composite™ Impact Sprinkler

FEATURES:

- Full or Part Circle Impact Sprinkler
- 23° Trajectory
- 1/2" Brass MPT Bearing
- Wide Range of Brass Nozzles
- 3/8-24 UNF Nozzle Threads
- 9/64" Nozzle Installed
- Use DN-1 Nozzle

AQUA BURST

Raven-Smart™

Technology of Modern Design™



X25EDS



X25ED

X25ED

PART NO.	INNER/CASE/PALLET	LIST
X25EDS	30/60/1620	16.20
X25ED	30/60/1620	16.20

ADVANTAGES:

- Anodized Aluminum Drive Arm with Brass Bushings
- Composite Body is Super-Strong and Impact Resistant
- All Brass Bearing
- Stainless Steel Fulcrum Pin, Arm Spring and Bearing Spring
- Easily Adjustable from 20° to 340°
- Operates Well at High and Low Pressure
- Built in Vane Straightener for Improved Performance
- Adjustable Diffuser Pin
- Made from Foreign and Domestic Parts

Performance Chart

Normal Stream Height at 2.5' above Nozzle at Normal Pressure

PSI	RADIUS - GPM		
	1/8"	9/64"	5/32"
35	36-2.64	36-3.41	39-4.30
40	37-2.68	37-3.69	40-4.58
45	38-2.71	37-3.97	43-4.89
50	39-2.96	39-4.09	45-5.16
55	39-3.18	40-4.17	46-5.31
60	39-3.29	41-4.25	47-5.60

HF20

1/2" Full Circle Brass Impact Sprinkler

FEATURES:

- Full Circle Impact Sprinkler
- 23° Trajectory
- 1/2" MPT Bearing with XC-33 Thread Sealant
- Single Nozzle
- 3/8-24 UNF Nozzle Threads
- Factory Installed 7/64" or 1/8" Nozzle Included
- Uses DN-1 Nozzle

AQUA BURST

Raven-Smart™ Technology of Modern Design™



HF20

HF20		
PART NO.	NOZZLE/CASE/PALLET	LIST
HF20-764	7/64"/100/2700	15.40
HF20-18	1/8"/100/2700	15.40

ADVANTAGES:

- Cast Brass Drive Arm with I-Beam Construction and Torque-Driven™ Spoon Technology with Improved Balance, Rotation Speed, and Durability
- Advanced Arm Balance with Consistent Rotation Speed and Increased Durability
- Stainless Steel Fulcrum Pin, Arm Spring and Bearing Spring
- Cast Brass Body with Large Impact Bridges and Cored Water Passage
- Coined Body and Arm Ensures Proper Arm Position and Smooth Operation
- Suitable for Solid Set and Portable Applications
- Made with Foreign and Domestic Parts

Performance Chart

Normal Stream Height at 9' Above Nozzle at Normal Pressure
RADIUS - GPM

PSI	3/32"	7/64"	1/8"	9/64"
35	36-1.50	38-2.05	39-2.69	39-3.39
40	36-1.61	38-2.19	39-2.88	40-3.62
45	37-1.71	39-2.32	39-3.04	40-3.84
50	37-1.80	39-2.45	40-3.21	41-4.05
55	38-1.89	40-2.57	40-3.37	41-4.24
60	38-1.97	40-2.68	40-3.52	41-4.43

HF20W

1/2" Brass Full Circle Wedge Impact Sprinkler

FEATURES:

- Full Circle Impact Sprinkler
- 23° Trajectory
- 1/2" MPT Bearing with XC-33 Thread Sealant
- Single Nozzle
- 3/8-24 UNF Nozzle Threads
- Uses DN-1 Nozzle

AQUA BURST

Raven-Smart™

Technology of Modern Design™



HF20W

HF20W		
PART NO.	CASE/PALLET	LIST
HF20W	100/2700	14.40

ADVANTAGES:

- Cast Brass Drive Arm with I-Beam Construction and Torque-Driven™ Spoon Technology with Improved Balance, Rotation Speed, and Durability
- Advanced Arm Balance with Consistent Rotation Speed and Increased Durability
- Stainless Steel Fulcrum Pin, Arm Spring and Bearing Spring
- Cast Brass Body with Large Impact Bridges and Cored Water Passage
- Coined Body and Arm Ensures Proper Arm Position and Smooth Operation
- Suitable for Solid Set and Portable Applications
- Made with Foreign and Domestic Parts

Performance Chart

Normal Stream Height at 9' Above Nozzle at Normal Pressure
RADIUS - GPM

PSI	1/16"	5/64"	3/32"	7/64"
20	-	30 - .81	33 - 1.14	34 - 1.55
25	29 - .58	31 - .90	33 - 1.27	35 - 1.73
30	29 - .64	31 - .99	34 - 1.39	35 - 1.90
35	30 - .68	32 - 1.07	34 - 1.50	36 - 2.05
40	30 - .74	32 - 1.14	35 - 1.61	37 - 2.19
45	31 - .77	33 - 1.21	35 - 1.71	37 - 2.32
50	31 - .82	34 - 1.27	36 - 1.80	38 - 2.45
55	32 - .86	34 - 1.33	36 - 1.89	38 - 2.57
60	32 - .90	34 - 1.39	37 - 1.97	38 - 2.68

AL30

3/4" Full Circle Multi-Composite™ Impact Sprinkler - Precision Channel™

FEATURES:

- Full Circle Impact Sprinkler
- 26° Trajectory
- 3/4" MPT Bearing with XC-33 Thread Sealant
- 1/4" NPT Nozzle Threads
- Single or Dual Nozzle (AL30D)
- Nozzle Not Included
- Use DN-3 Nozzle

AQUA BURST

Raven-Smart

Technology of Modern Design™



AL30



AL30SP

AL30

PART NO.	CASE/PALLET	LIST
AL30	60/1620	17.36
AL30C	Chrome Bearing 60/1620	18.70
AL30SP	Composite Spindle Bearing 60/1620	16.90

ADVANTAGES:

- Anodized Die-Cast Aluminum Drive Arm with Precision Channel Spoon™ for Smooth Torque-Driven™ Operation and Reduced Splashdown
- Composite Body is Super-Strong and Impact Resistant
- Highly Efficient Water Distribution at Both High and Low Operating Pressures
- All-Brass Seal-Lock Bearing Creates a Debris Resistant Captive Seal for Long Bearing Wear
- Bearing Spindle with Debris Journal to Slow Bearing Wear
- Stainless-Steel Fulcrum Pin, Arm Spring and Bearing Spring for Long Wearing Reliability
- Ideal for Wheel Line, Solid Set and Frost Control
- Works Well with Either Straight Bore Nozzle or Flow-Control Nozzle with 1/4" NPT Threads
- Made with Domestic and Foreign Parts

Performance Chart

Normal Stream Height at 9' Above Nozzle
 at Normal Pressure RADIUS - GPM

PSI	1/8"	9/64"	5/32"	11/64"	3/16"
35	40-2.40	41-3.20	43-4.10	46-5.30	47-6.00
40	40-2.50	42-3.50	44-4.60	46-5.50	48-6.40
45	41-2.80	42-3.70	45-5.10	47-5.80	49-6.80
50	41-3.10	43-3.90	46-5.10	48-6.20	50-7.30
55	42-3.20	43-4.30	46-5.40	48-6.40	50-7.60
60	42-3.40	44-4.50	47-5.60	49-6.60	51-7.60
65	43-3.60	44-4.70	47-5.80	49-6.90	51-8.20
70	44-3.90	45-4.90	48-6.00	50-7.90	52-8.60

R208

3/4" Full Circle Brass Impact Sprinkler

FEATURES:

- Full Circle Impact Sprinkler
- 25° Trajectory
- 3/4" MPT Bearing
- Wide Range of Brass Nozzles
- 1/4" NPT nozzle threads
- Nozzle Not Included
- Use Dn-3 or PN-3 Nozzle



REVOLVER

SPRINKLERS™



R208

R208		
PART NO.	CASE/PALLET	LIST
R208	60/1620	18.98

ADVANTAGES:

- Forged Brass Drive Arm
- Cast Brass Head
- Cored Water Passage
- Stainless Steel Fulcrum Pin, Arm Spring and Bearing Spring

Performance Chart

Normal Stream Height at 9' Above Nozzle at Normal Pressure
DIAMETER - GPM

PSI	1/8"	9/64"	5/32"	11/64"	3/16"
25	77-2.10	80-2.80	82-3.50	86-4.30	88-5.10
30	78-2.20	81-3.00	84-3.80	87-4.60	89-5.50
35	79-2.40	82-3.30	86-4.10	89-5.10	91-5.90
40	81-2.60	83-3.50	87-4.50	91-5.30	93-6.40
45	82-2.90	84-3.70	88-4.70	92-5.70	94-6.70
50	83-3.10	85-4.00	89-4.90	94-6.10	96-7.20
55	84-3.30	86-4.30	90-5.10	96-6.40	97-7.50
60	85-3.50	87-4.50	92-5.40	97-6.70	99-7.80
65	86-3.70	88-4.70	93-5.70	98-7.00	100-8.10
70	87-3.90	89-4.80	94-5.90	99-7.20	102-8.40
75	88-4.00	90-5.00	95-6.20	100-7.50	103-8.60
80	89-4.20	81-5.10	96-6.40	101-7.70	105-9.00

HF30

3/4" Full Circle Brass Impact Sprinkler - Torque Driven™

FEATURES:

- Full-Circle Impact – 26° Trajectory
- 3/4" MPT Brass Bearing
- Single (HF30) or Dual Nozzle (HF30D)
- Fits 3/4" Size Nozzle (DN-3 Series)

AQUA BURST

Raven-Smart™

Technology of Modern Design™



HF30



HF30AL

HF30

PART NO.	CASE/PALLET	LIST
HF30	60/1620	19.98
HF30D	Dual Nozzle 60/1620	22.12
HF30AL	Aluminum Drive Arm	19.98

ADVANTAGES:

- Cast Brass Drive Arm with I-Beam Construction and Torque-Driven™ Spoon Technology with Improved Balance, Rotation Speed, and Durability
- Cast Brass Body with Triple Bridge Construction and Cored Water Passage
- Seal-Lock Bearing Creates a Captive Seal
- Spindle with Debris Journal to Slow Bearing Wear
- Stainless-Steel Fulcrum Pin, Arm Spring, and Bearing Spring for Long Wearing Reliability
- Ideal for Hand Line, Wheel Line, Solid Set, and a Wide-Range of Other Applications
- Made with Domestic and Foreign Parts
- Preassembled with XC-33 Thread Sealant

Performance Chart

Normal Stream Height at 9' Above Nozzle at Normal Pressure - Single Nozzle RADIUS - GPM

PSI	1/8"	9/64"	5/32"	11/64"	3/16"
35	40-2.40	41-3.30	43-4.10	45-5.10	46-5.90
40	40-2.60	42-3.50	44-4.50	46-5.30	47-6.40
45	41-2.90	42-3.70	44-4.70	46-5.70	48-6.70
50	42-3.10	43-4.00	45-4.90	47-6.10	48-7.20
55	42-3.30	43-4.30	45-5.10	48-6.40	49-7.50
60	43-3.50	44-4.50	46-5.40	49-6.70	49-7.80
65	43-3.70	44-4.70	46-5.70	49-7.00	50-8.10
70	44-3.90	45-4.80	47-5.90	50-7.20	51-8.40

X35ED

3/4" adjustable Brass Impact Sprinkler

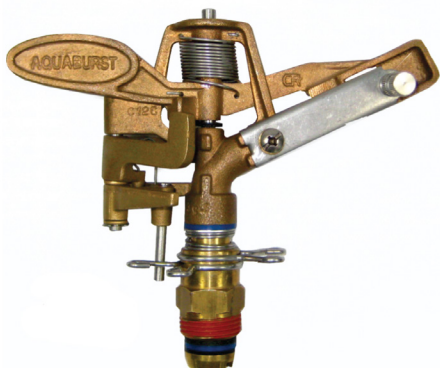
FEATURES:

- Full or Part-Circle Impact – 25° Trajectory
- 3/4" MPT Base
- Single nozzle
- Fits 3/4" Size Nozzle - (DN-3 Series)

AQUA BURST 

Raven-Smart™

Technology of Modern Design™



X35ED

X35ED

PART NO.	CASE/PALLET	LIST
X35ED	20/540	47.34

ADVANTAGES:

- Cast Brass Drive Arm with Triple Bridge construction
- Heavy-Duty All-Brass Trip Assembly
- Cast Brass Body with Cored Water Passage
- Stainless-Steel Fulcrum Pin, Arm Spring and Bearing Spring for Long-Wearing Reliability
- An All-Purpose, Single Nozzle, Full or Part Circle, Intermediate to High Pressure Sprinkler
- Perfect for all Intermediate Sprinklers where Arc of Coverage Must be Adjustable
- Easy-to-Use Diffuser Pin for Precise Application
- Works Well with Either Straight Bore or Flow Control Nozzle
- Made with Domestic and Foreign Parts
- Preassembled with XC-33 Thread Sealant

Performance Chart

Normal Stream Height at 9' Above Nozzle at Normal Pressure
 RADIUS - GPM

PSI	9/64"	5/32"	11/64"	3/16"
35	41-3.45	42-4.28	43-4.99	44-5.91
40	42-3.66	42-4.57	43-5.26	44-6.44
45	43-3.90	43-4.84	44-5.58	45-6.74
50	44-4.07	44-5.21	45-5.94	46-7.03
55	45-4.30	46-5.40	47-6.21	47-7.41
60	45-4.48	46-5.73	47-6.50	48-7.72
70	46-4.80	47-5.91	48-7.00	50-8.23

X65EDS

1" Adjustable Brass Impact Sprinkler

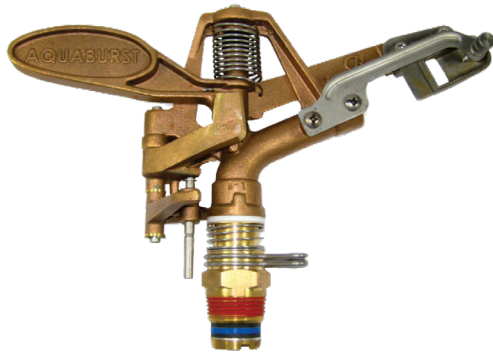
FEATURES:

- Full or Part-Circle Impact – 24° Trajectory
- 1" MPT Base
- Single Nozzle
- Fits 1" Size Nozzle - (DN-4 Series)

AQUA BURST

Raven-Smart™

Technology of Modern Design™



X65ED



X65F

X65ED

PART NO.	CASE/PALLET	LIST
X65EDS	Part Circle 5/120	152.00
X65F	Full Circle 5/120	132.00

ADVANTAGES:

- Features Replaceable Stainless Steel Spoon
- Chrome Bearing Standard
- Adjustable Arc from 20° to 340° or Full-Circle
- Solid Brass Construction
- Stainless-Steel Fulcrum Pin, Arm Spring, and Bearing Spring for Long-Wearing Reliability
- Easy-to-use Diffuser Pin for Precise Application
- Ideal for Pasture, Turf, Wastewater Treatment, Auxiliary pivot End Gun and other Large-Scale Applications where Adjustable coverage is necessary
- Made with Domestic and Foreign Parts
- Preassembled with XC-33 Thread Sealant

Performance Chart

Normal Stream Height at 9' Above Nozzle at Normal Pressure RADIUS - GPM

PSI	7/32"	1/4"	9/32"	5/16"	3/8"
35	52-8.10	54-10.80	58-13.50	59-16.50	64-22.70
40	54-8.70	56-11.50	61-14.50	62-17.80	68-24.50
45	56-9.20	58-12.20	63-15.20	64-18.80	71-25.90
50	59-9.90	61-12.90	64-16.00	67-19.90	72-27.20
55	61-10.20	63-13.40	66-16.90	69-20.80	74-28.40
60	62-10.70	65-14.20	67-17.60	71-21.90	76-29.50
65	64-11.20	66-14.80	69-18.40	73-22.80	79-30.80
70	65-11.80	67-15.40	70-19.20	74-23.70	81-32.10

X85ED

1 1/4" Adjustable Brass Impact Sprinkler

FEATURES:

- Full or Part-Circle Impact
- 18° or 24° Trajectory
- 1 1/4" MPT Base
- Dual nozzle - (DN-5 Series)

AQUA BURST

Raven-Smart™

Technology of Modern Design™



X85ED24



X85ED18



X85F

X85ED

PART NO.		LIST
X85ED18	18° Part Circle	238.00
X85ED24	24° Part Circle	238.00
X85F	24° Full Circle	198.00

ADVANTAGES:

- Chrome Bearing Standard
- H.D. Stainless-Steel and Brass Construction
- Easy to use Adjustable Locking Brass Trip Collars
- Internal Vane Straightener Standard
- Removable Stainless-Steel Spoons Standard
- Ideal for Pasture, Waste Water Treatment, Pivot End Gun and other Large Scale Applications Where Adjustable Coverage is Necessary
- Made with Domestic and Foreign Parts
- Preassembled with XC-33 Thread Sealant

Performance Chart X85ED24 DUAL NOZZLE

Normal Stream Height at 14' Above Nozzle at Normal Pressure
RADIUS - GPM

PSI	11/32" x 7/32"	3/8" x 7/32"	13/32" x 7/32"	7/16" x 7/32"	15/32" x 7/32"
35	66-27.10	67-30.70	70-34.60	72-38.50	75-42.50
40	68-20.80	69-32.00	73-37.00	76-41.30	78-45.70
45	70-22.10	72-34.90	76-39.40	78-43.90	81-48.60
50	72-23.30	73-37.20	78-41.60	80-46.20	83-51.40
55	74-24.20	76-38.50	80-42.80	82-48.60	85-54.10
60	76-25.00	78-40.80	82-46.10	85-51.00	87-56.60
65	77-26.20	80-42.70	84-48.00	87-53.30	88-59.30
70	80-27.20	82-44.50	85-49.90	89-55.20	90-61.50
75	81-27.90	84-46.00	87-51.70	90-57.30	92-63.70
80	83-29.10	85-47.80	88-53.90	91-59.40	94-66.10



AQUA BURST® PERFORMANCE CHART

X85ED18

NORMAL STREAM HEIGHT AT 14' ABOVE NOZZLE AT NORMAL PRESSURE
RADIUS - GPM

PSI	11/32" nozzle	3/8" nozzle	13/32" nozzle	7/16" nozzle	15/32" nozzle	1/2" nozzle	17/32" nozzle	9/16" nozzle	5/8" nozzle	11/16" nozzle
35	59 - 19.8	61 - 23.5	64 - 26.5	66 - 30.9	69 - 34.1	69 - 39.3	72 - 43.3	72 - 49.3	72 - 59.8	73 - 72.2
40	61 - 21.1	63 - 24.9	66 - 28.3	69 - 33.2	71 - 37.3	73 - 41.1	75 - 46.4	77 - 52.8	77 - 64.0	78 - 77.8
45	63 - 22.6	66 - 26.6	69 - 30.4	71 - 34.6	73 - 39.7	75 - 43.7	78 - 49.3	79 - 56.6	83 - 69.9	83 - 83.0
50	66 - 23.8	68 - 27.5	71 - 32.6	73 - 36.9	76 - 42.2	78 - 47.0	80 - 51.5	82 - 59.7	85 - 71.8	86 - 87.3
55	68 - 24.9	70 - 29.3	73 - 33.8	75 - 38.8	78 - 44.4	80 - 49.1	82 - 54.1	85 - 62.6	89 - 76.1	91 - 91.9
60	70 - 25.6	72 - 30.1	75 - 34.9	77 - 41.0	80 - 46.8	82 - 51.9	85 - 57.4	87 - 65.3	91 - 79.0	94 - 96.4
65	72 - 26.7	74 - 31.3	77 - 36.2	79 - 42.8	81 - 48.3	84 - 54.0	87 - 60.2	89 - 67.8	93 - 83.2	96 - 100.9
70	73 - 27.6	76 - 32.5	78 - 37.6	81 - 44.6	83 - 50.5	86 - 56.2	89 - 62.3	91 - 71.3	95 - 86.4	98 - 104.8
75	74 - 28.8	77 - 33.6	80 - 38.9	83 - 45.9	85 - 52.2	87 - 58.4	90 - 64.5	93 - 73.9	97 - 88.8	100 - 108.1
80	76 - 29.7	79 - 34.6	81 - 41.2	84 - 47.6	87 - 54.8	89 - 60.2	92 - 66.9	95 - 76.8	98 - 93.0	101 - 112.2

X85ED24

NORMAL STREAM HEIGHT AT 14' ABOVE NOZZLE AT NORMAL PRESSURE
RADIUS - GPM

PSI	11/32" nozzle	3/8" nozzle	13/32" nozzle	7/16" nozzle	15/32" nozzle	1/2" nozzle	17/32" nozzle	9/16" nozzle	5/8" nozzle	11/16" nozzle
35	66 - 19.5	67 - 23.3	70 - 26.6	72 - 30.7	75 - 34.5	77 - 39.0	78 - 43.1	78 - 49.3	78 - 60.2	78 - 72.3
40	68 - 20.8	69 - 24.8	73 - 28.2	76 - 33.0	78 - 37.4	81 - 41.4	82 - 46.3	84 - 52.6	85 - 64.4	86 - 78.3
45	70 - 22.1	72 - 26.4	76 - 30.6	78 - 34.8	81 - 39.6	83 - 44.1	86 - 49.0	88 - 56.0	91 - 69.1	92 - 83.3
50	72 - 23.3	73 - 27.6	78 - 32.4	80 - 37.2	83 - 42.0	86 - 47.2	88 - 51.2	91 - 59.3	93 - 72.4	96 - 87.5
55	74 - 24.2	76 - 29.2	80 - 32.0	82 - 38.9	85 - 44.3	88 - 49.4	90 - 54.3	94 - 62.1	97 - 76.5	98 - 92.7
60	76 - 25.0	78 - 30.0	82 - 34.5	85 - 40.8	87 - 46.5	90 - 52.1	93 - 57.6	95 - 64.4	100 - 79.4	101 - 96.8
65	77 - 26.2	80 - 31.2	84 - 36.1	87 - 42.6	88 - 48.4	92 - 54.2	94 - 60.3	98 - 68.0	101 - 83.5	104 - 101.3
70	80 - 27.2	82 - 32.6	85 - 38.0	89 - 44.0	90 - 50.3	94 - 56.4	96 - 62.1	100 - 71.5	102 - 87.1	106 - 105.4
75	81 - 27.9	84 - 33.5	87 - 39.1	90 - 45.5	92 - 52.0	95 - 58.5	98 - 64.7	101 - 73.3	104 - 89.9	108 - 108.8
80	83 - 29.1	85 - 34.8	88 - 41.0	91 - 47.6	94 - 54.2	96 - 60.3	100 - 67.3	103 - 76.2	106 - 93.5	109 - 112.4

SENNINGER® MINI-WOBBLER™

The mini-Wobbler uses Senninger's offcenter rotary-action wobbler technology.

It provides extremely uniform coverage over a large diameter at low pressures.

i-mini-Wobbler is designed for inverted installations in greenhouses and it produces a broad rain-like application

FEATURES:

Upright

- Low evaporative loss
 - Multi-level throw: 10°
 - Flow rates: 0.42 to 2.18 gpm (95 to 495 L/hr)
 - Operating pressures: 15 to 25 psi (1.03 to 1.72 bar)
 - Connection: 1/2" NPT male
 - Two-year warranty on materials, workmanship and performance
 - Color-coded nozzles for easy size identification.
- Warranted to maintain correct orifice size for five years

Inverted

- Low evaporative loss
 - Multi-level throw: 0°
 - Flow rates: 0.75 to 2.18 gpm (170 to 495 L/hr)
 - Operating pressures: 20 to 25 psi (1.38 to 1.72 bar)
 - Connection: 1/2" NPT male
 - Two-year warranty on materials, workmanship and performance
 - Color-coded nozzles for easy size identification.
- Warranted to maintain correct orifice size for five years



SENNINGER® MINI-WOBBLER

PART NO.	DESCRIPTION	BOX	LIST
WOBXXM200	White Deflector #4-8 Noz	200	3.25
WOBXXM240H	High Angle Black Deflector #4-8	200	4.30
WOBXXM250	Inverted Blue Deflector #5-8 Noz	200	3.25



PERFORMANCE UPRIGHT

SPRINKLER BASE PRESSURE-US	psi		
	15	20	25
#4 Nozzle - Light Blue (1/16")			
Flow (gpm)	0.42	0.50	0.56
Diameter at 1.5 ft ht (ft)	26.5	28.0	28.0
Diameter at 3.0 ft ht (ft)	31.0	32.0	34.0
#5 Nozzle - Beige (5/64")			
Flow (gpm)	0.64	0.75	0.84
Diameter at 1.5 ft ht (ft)	31.0	33.5	35.0
Diameter at 3.0 ft ht (ft)	36.5	39.0	39.5
#6 Nozzle - Gold (3/32")			
Flow (gpm)	0.95	1.10	1.25
Diameter at 1.5 ft ht (ft)	33.0	36.0	37.0
Diameter at 3.0 ft ht (ft)	39.5	42.0	42.0
#7 Nozzle - Lime (7/64")			
Flow (gpm)	1.30	1.51	1.69
Diameter at 1.5 ft ht (ft)	35.0	37.5	38.5
Diameter at 3.0 ft ht (ft)	41.0	43.0	43.0
#8 Nozzle - Lavender (1/8")			
Flow (gpm)	1.67	1.95	2.18
Diameter at 1.5 ft ht (ft)	35.5	38.5	38.0
Diameter at 3.0 ft ht (ft)	41.5	43.0	43.0

PERFORMANCE INVERTED

SPRINKLER BASE PRESSURE-US	psi	
	20	25
#5 Nozzle - Beige (5/64")		
Flow (gpm)	0.75	0.84
Diameter at 3.0 ft ht (ft)	30.0	31.0
Diameter at 6.0 ft ht (ft)	32.0	32.5
#6 Nozzle - Gold (3/32")		
Flow (gpm)	1.10	1.25
Diameter at 3.0 ft ht (ft)	31.0	31.4
Diameter at 6.0 ft ht (ft)	34.0	34.5
#7 Nozzle - Lime (7/64")		
Flow (gpm)	1.51	1.69
Diameter at 3.0 ft ht (ft)	31.0	32.0
Diameter at 6.0 ft ht (ft)	35.0	35.5
#8 Nozzle - Lavender (1/8")		
Flow (gpm)	1.95	2.18
Diameter at 3.0 ft ht (ft)	31.5	32.0
Diameter at 6.0 ft ht (ft)	35.5	36.0

SENNINGER® XCEL-WOBBLER™

The Xcel-Wobbler uses Senninger's off-center rotary action technology. It provides an extremely uniform and instantaneous application pattern over a large area at lower pressures, and with very low evaporative loss.



- Counter-balance reduces vibration for stable performance
- Only one moving part – which translates to longer life
- Connections: 3/4" or 1/2" NPT male
- Flow rates: 0.78 to 6.97 gpm (177 to 1583 L/hr)
- Operating pressures: 10 to 25 psi (0.69 to 1.72 bar)
- Low wind drift and evaporative loss at low pressures
- Two-year warranty on materials, workmanship and performance
- Color-coded nozzles for easy size identification.

Warranted to maintain correct orifice size for five years



High Angle



Mid Angle

SENNINGER® XCEL-WOBBLER

PART NO.	DESCRIPTION	BOX	LIST
XWOBXXB3HALD	3/4" High Angle Black Deflector #6-14 Noz	100	9.00
XWOBXXB2HALD	1/2" High Angle Black Deflector #6-14 Noz	100	9.00
XWOBXXB3MA	3/4" Mid Angle White Deflector #6-14 Noz	100	9.00
XWOBXXB2MA	1/2" Mid Angle White Deflector #6-14 Noz	100	9.00

PERFORMANCE CHART

SPRINKLER BASE PRESSURE-US	psi			
	10	15	20	25
#6 Nozzle - Gold (3/32")				
Flow (gpm)	0.78	0.95	1.10	1.23
MA Diameter at 1.5 ft ht (ft)	32.0	35.0	38.5	41.0
HA Diameter at 1.5 ft ht (ft)	36.5	41.0	45.0	46.0
#7 Nozzle - Lime (7/64")				
Flow (gpm)	1.06	1.30	1.50	1.68
MA Diameter at 1.5 ft ht (ft)	33.0	36.5	40.5	41.0
HA Diameter at 1.5 ft ht (ft)	40.0	46.5	47.0	50.5
#8 Nozzle - Lavender (1/8")				
Flow (gpm)	1.40	1.71	1.98	2.21
MA Diameter at 1.5 ft ht (ft)	34.0	38.5	41.0	42.5
HA Diameter at 1.5 ft ht (ft)	42.0	46.5	47.0	51.5
#9 Nozzle - Grey (9/64")				
Flow (gpm)	1.80	2.20	2.54	2.84
MA Diameter at 1.5 ft ht (ft)	34.5	40.5	42.0	43.0
HA Diameter at 1.5 ft ht (ft)	44.0	47.0	50.5	52.5
#10 Nozzle - Turquoise (5/32")				
Flow (gpm)	2.22	2.72	3.14	3.51
MA Diameter at 1.5 ft ht (ft)	36.0	41.0	42.5	44.0
HA Diameter at 1.5 ft ht (ft)	44.5	49.0	50.5	53.5
#11 Nozzle - Yellow (11/64")				
Flow (gpm)	2.69	3.30	3.81	4.26
MA Diameter at 1.5 ft ht (ft)	36.0	41.5	43.0	44.0
HA Diameter at 1.5 ft ht (ft)	44.5	50.5	51.5	54.0
#12 Nozzle - Red (3/16")				
Flow (gpm)	3.23	3.96	4.57	5.11
MA Diameter at 1.5 ft ht (ft)	36.5	41.5	44.5	44.5
HA Diameter at 1.5 ft ht (ft)	46.0	50.5	52.0	54.5
#13 Nozzle - White (13/64")				
Flow (gpm)	3.80	4.65	5.38	6.01
MA Diameter at 1.5 ft ht (ft)	36.5	41.5	44.5	45.0
HA Diameter at 1.5 ft ht (ft)	46.5	51.0	52.5	55.5
#14 Nozzle - Blue (7/32")				
Flow (gpm)	4.40	5.39	6.23	6.97
MA Diameter at 1.5 ft ht (ft)	37.0	42.5	45.0	46.5
HA Diameter at 1.5 ft ht (ft)	47.0	51.0	53.0	55.5

SENNINGER® WOBBLER®

Wobblers use Senninger's off-center rotary-action technology, which provides extremely uniform coverage over a large diameter at low pressures.

These produce droplets that resist wind-drift and are applied in a gentle rain-like pattern.



- Only one moving part – which translates to longer life
- Flow rates: 0.78 to 7.64 gpm (177 to 1735 L/hr)
- Operating pressures: 10 to 30 psi (0.69 to 2.07 bar)
- Low evaporative loss
- Connections: 3/4" and 1/2" NPT male
- Two-year warranty on materials, workmanship and performance
- Color-coded nozzles for easy size identification.

Warranted to maintain correct orifice size for five years



Standard Angle



Low Angle

SENNINGER® WOBBLER®

PART NO.	DESCRIPTION	BOX	LIST
WOBXXB3	3/4" Standard Angle Black Deflector #6-14 Noz	100	9.00
WOBXXB2	1/2" Standard Angle Black Deflector #6-14 Noz	100	9.00
WOBXXB3LA	3/4" Low Angle White Deflector #6-14 Noz	100	9.00
WOBXXB2LA	1/2" Low Angle White Deflector #6-14 Noz	100	9.00

PERFORMANCE CHART

SPRINKLER BASE PRESSURE-US	psi				
	10	15	20	25	30
#6 Nozzle - Gold (3/32")					
Flow (gpm)	0.78	0.95	1.10	1.23	1.35
SA Diameter at 1.5 ft ht (ft)	34.0	39.0	41.5	43.5	44.0
LA Diameter at 1.5 ft ht (ft)	29.0	34.5	38.0	40.5	41.0
#7 Nozzle - Lime (7/64")					
Flow (gpm)	1.06	1.30	1.50	1.68	1.84
SA Diameter at 1.5 ft ht (ft)	36.5	41.5	43.5	45.0	45.5
LA Diameter at 1.5 ft ht (ft)	31.5	37.0	40.0	41.5	42.0
#8 Nozzle - Lavender (1/8")					
Flow (gpm)	1.40	1.71	1.98	2.21	2.42
SA Diameter at 1.5 ft ht (ft)	38.5	43.5	45.0	46.5	47.0
LA Diameter at 1.5 ft ht (ft)	34.0	39.0	41.5	42.5	43.0
#9 Nozzle - Grey (9/64")					
Flow (gpm)	1.80	2.20	2.54	2.84	3.11
SA Diameter at 1.5 ft ht (ft)	40.5	45.5	46.5	47.5	48.0
LA Diameter at 1.5 ft ht (ft)	35.5	40.5	42.5	43.5	44.0
#10 Nozzle - Turquoise (5/32")					
Flow (gpm)	2.22	2.72	3.14	3.51	3.85
SA Diameter at 1.5 ft ht (ft)	42.0	47.0	48.0	48.5	49.0
LA Diameter at 1.5 ft ht (ft)	36.0	41.0	43.0	44.0	44.5
#11 Nozzle - Yellow (11/64")					
Flow (gpm)	2.69	3.30	3.81	4.26	4.67
SA Diameter at 1.5 ft ht (ft)	43.0	48.0	49.0	49.5	50.0
LA Diameter at 1.5 ft ht (ft)	36.5	42.0	43.5	44.5	45.0
#12 Nozzle - Red (3/16")					
Flow (gpm)	3.23	3.96	4.57	5.11	5.60
SA Diameter at 1.5 ft ht (ft)	44.0	49.0	50.0	50.5	51.0
LA Diameter at 1.5 ft ht (ft)	37.0	42.5	44.0	45.0	45.5
#13 Nozzle - White (13/64")					
Flow (gpm)	3.80	4.65	5.38	6.01	6.59
SA Diameter at 1.5 ft ht (ft)	44.5	49.5	50.5	51.0	51.5
LA Diameter at 1.5 ft ht (ft)	37.5	43.0	44.5	45.5	46.0
#14 Nozzle - Blue (7/32")					
Flow (gpm)	4.40	5.39	6.23	6.97	7.64
SA Diameter at 1.5 ft ht (ft)	45.0	50.0	51.0	51.5	52.0
LA Diameter at 1.5 ft ht (ft)	38.0	43.5	45.0	46.0	46.5

SENNINGER® 20 SERIES

FEATURES:

The 20 series full-circle impacts are Senninger's most economical sprinklers. The 20 Series includes several models available on risers or under-tree installations.

- Three models with different trajectories available:
 - 2009 - 9° fights wind drift and evaporation
 - 2014 - 14° ideal for under-tree irrigation
 - 2023 - 23° maximum throw on risers
- Wide range of nozzle and vane combinations for excellent distribution at all pressures
- Built-in hex wrench for easy, in-the-field maintenance
- Connections: 1/2" NPT male (female also available)
- Flow rates: 1.34 to 3.98 gpm
- Operating pressures: 30 to 50 psi
- Two-year warranty on materials, workmanship and performance
- Color-coded nozzles for easy size identification. Warranted to maintain correct orifice size for five years



SENNINGER® 20 SERIES

PART NO.	DESCRIPTION	BOX	LIST
2009HS12MxxxH	1/2" MPT 9°	100	10.05
2009HS12FxxxH	1/2" MPT w/1/2" F Coupling	100	10.05
2009HS13FxxxH	1/2" MPT w/1/2" x 3/4" F	100	10.05
2014HS12MxxxH	1/2" MPT 12°	100	10.05
2014HS13FxxxH	1/2" MPT w/1/2" x 3/4" F	100	10.05
2014HS1QCxxxH	Quick-Connect Swivel	100	10.05
2023HS12MxxxH	1/2" MPT 23°	100	10.05
2023HS12FxxxH	1/2" w/1/2" F Coupling	100	10.05
2023HS13FxxxH	1/2" MPT w/1/2" x 3/4" F	100	10.05
2023HS1QCxxxH	Quick-Connect Swivel	100	10.05

PERFORMANCE CHART

2009HS SPRINKLER BASE PRESSURE- US	psi					2014HS SPRINKLER BASE PRESSURE- US	psi					2023HS SPRINKLER BASE PRESSURE- US	psi				
	30	35	40	45	50		30	35	40	45	50		30	35	40	45	50
#6 Nozzle - Gold (3/32")	1.34	1.45	1.55	1.64	---	#6 Nozzle - Gold (3/32")	1.34	1.45	1.55	1.64	---	#6 Nozzle - Gold (3/32")	1.34	1.45	1.55	1.64	---
Flow (gpm)	58	60	62	64	---	Diameter at 1.5 ft ht (ft)	66	68	70	72	---	Diameter at 1.5 ft ht (ft)	74	75	76	77	---
Diameter at 1.5 ft ht (ft)	1.84	1.99	2.12	2.25	2.37	#7 Nozzle - Lime (7/64")	1.84	1.99	2.12	2.25	2.37	#7 Nozzle - Lime (7/64")	1.84	1.99	2.12	2.25	2.37
Flow (gpm)	60	62	64	66	67	Diameter at 1.5 ft ht (ft)	68	70	72	74	75	Diameter at 1.5 ft ht (ft)	76	77	78	79	80
Diameter at 1.5 ft ht (ft)	2.42	2.62	2.79	2.97	3.12	#8 Nozzle - Lavender (1/8")	2.42	2.62	2.79	2.97	3.12	#8 Nozzle - Lavender (1/8")	2.42	2.62	2.79	2.97	3.12
Flow (gpm)	62	64	66	68	69	Diameter at 1.5 ft ht (ft)	70	72	74	76	77	Diameter at 1.5 ft ht (ft)	78	79	80	81	82
Diameter at 1.5 ft ht (ft)	3.08	3.33	3.56	3.78	3.98	#9 Nozzle - Grey (9/64")	3.08	3.33	3.56	3.78	3.98	#9 Nozzle - Grey (9/64")	3.08	3.33	3.56	3.78	3.98
Flow (gpm)	64	66	68	70	71	Diameter at 1.5 ft ht (ft)	71	73	75	77	78	Diameter at 1.5 ft ht (ft)	79	80	81	82	83
Diameter at 1.5 ft ht (ft)																	

SENNINGER® COMPACT IMPACT

FEATURES:

- 23° trajectory for maximum throw
- Connections: 3/4" NPT male or 3/4" NPT female
- Flow rates: 3.08 to 7.13 gpm
- Operating pressures: 30 to 50 psi
- Two-year warranty on materials, workmanship and performance
- Color-coded nozzles for easy size identification. Warranted to maintain correct orifice size for five years



SENNINGER® COMPACT IMPACT

PART NO.	DESCRIPTION	BOX	LIST
2023HBS13MxxxH	3/4" MPT w/Diffuser	100	10.05
2023HBS13FxxxH	3/4" FPT w/Diffuser	100	10.05

PERFORMANCE CHART

COMPACT IMPACT SPRINKLER BASE PRESSURE-US	psi				
	30	35	40	45	50
#9 Nozzle - Grey (9/64")					
Flow (gpm)	3.08	3.33	3.56	3.78	3.98
Diameter at 1.5 ft ht (ft)	78	78	82	86	86
Diameter at 3.0 ft ht (ft)	84	86	87	88	90
#10 Nozzle - Turquoise (5/32")					
Flow (gpm)	3.82	4.13	4.41	4.68	4.93
Diameter at 1.5 ft ht (ft)	80	82	82	86	88
Diameter at 3.0 ft ht (ft)	86	87	89	91	92
#11 Nozzle - Yellow (11/64")					
Flow (gpm)	4.63	5.00	5.34	5.67	5.98
Diameter at 1.5 ft ht (ft)	82	82	86	88	90
Diameter at 3.0 ft ht (ft)	88	89	92	94	95
#12 Nozzle - Red (3/16")					
Flow (gpm)	5.52	5.97	6.37	6.76	7.13
Diameter at 1.5 ft ht (ft)	83	87	90	92	96
Diameter at 3.0 ft ht (ft)	89	91	94	97	98



The Compact Impact's splasharm diffuser splits the stream, distributing water more uniformly over the wetted area. It emulates dual nozzle performance without the clogging potential often found with smaller secondary nozzles.

SENNINGER® WEDGEDRIVE™

FEATURES:

- 14° or 23° model trajectories (9° model also available)
- Flow rates: 0.84 to 3.98 gpm (191 to 904 L/hr)
- Operating pressures: 25 to 50 psi (1.72 to 3.45 bar)
- Connections: 1/2" NPT male
- Two-year warranty on materials, workmanship and performance
- Color-coded nozzles for easy size identification. Warranted to maintain correct orifice size for five years



SENNINGER® COMPACT IMPACT			
PART NO.	DESCRIPTION	BOX	LIST
2009HWS12MxxH	1/2" MPT 9°	100	10.05
2014HWS12MxxxH	1/2" MPT 14°	100	10.05
2023HWS12MxxxH	1/2" MPT 23°	100	10.05

PERFORMANCE CHART

WEDGE DRIVE SPRINKLER BASE PRESSURE-US	psi					
	25	30	35	40	45	50
#5 Nozzle - Beige (5/64")						
Flow (gpm)	0.84	0.92	0.99	1.06	1.13	1.19
2014 Diameter at 1.5 ft ht (ft)	60	61	65	67	68	69
2023 Diameter at 1.5 ft ht (ft)	70	70	70	72	76	75
#6 Nozzle - Gold (3/32")						
Flow (gpm)	1.22	1.34	1.45	1.55	1.64	1.73
2014 Diameter at 1.5 ft ht (ft)	61	64	68	70	72	73
2023 Diameter at 1.5 ft ht (ft)	68	70	72	73	78	76
#7 Nozzle - Lime (7/64")						
Flow (gpm)	1.68	1.84	1.99	2.12	2.25	2.37
2014 Diameter at 1.5 ft ht (ft)	64	66	70	74	76	77
2023 Diameter at 1.5 ft ht (ft)	72	73	74	76	77	78
#8 Nozzle - Lavender (1/8")						
Flow (gpm)	2.21	2.42	2.62	2.79	2.97	3.12
2014 Diameter at 1.5 ft ht (ft)	67	70	73	77	79	80
2023 Diameter at 1.5 ft ht (ft)	74	76	77	78	79	80
#9 Nozzle - Grey (9/64")						
Flow (gpm)	2.81	3.08	3.33	3.56	3.78	3.98
2014 Diameter at 1.5 ft ht (ft)	68	72	76	78	81	81
2023 Diameter at 1.5 ft ht (ft)	78	78	80	81	82	83



Splasharm top view

The 20 series WedgeDrive sprinkler alternately deflects flows in front and behind the splasharm as the wedge diffuser reacts to an incoming water stream. Its square orifice nozzle and rapid 360° rotation speed at low pressures delivers uniform distribution near and away from the sprinkler.

SENNINGER® 30 SERIES

FEATURES:

Senninger's 30 Series impact sprinklers deliver lower flows than the 40 or 50 series models.

- Wide range of nozzle and vane combinations for excellent distribution at all pressures
- Built-in hex wrench for easy in-the-field maintenance
- 23° model available with double nozzle
- Two trajectories available:
 - 12° - ideal for under-tree irrigation
 - 23° - maximum throw on overhead systems
- Connection: 3/4" NPT male (female also available)
- Flow rates: 1.84 to 6.42 gpm
- Operating pressures: 30 to 50 psi
- Two-year warranty on materials, workmanship and performance
- Color-coded nozzles for easy size identification. Warranted to maintain correct orifice size for five years



SENNINGER® 30 SERIES

PART NO.	DESCRIPTION	BOX	LIST
301213MxxxH	3/4" MPT 12°	50	13.35
301213FxxxH	3/4" MPT w/ F Coupling	50	13.35
301214FxxxH	3/4" MPT w/1" F Coupling	50	13.35
302313MxxxH	3/4" MPT 23° Single Noz.	50	13.35
302313FxxxH	3/4" MPT w/ F Coupling	50	13.35
302314FxxxH	3/4" MPT w/1" F Coupling	50	13.35
302323MxxxHxxRR	3/4" MPT 23° Dual Noz	50	15.25
302323FxxxHxxRR	3/4" MPT w/ F Coupling	50	15.25
302324FxxxHxxRR	3/4" MPT w/1" F Coupling	50	15.25

PERFORMANCE CHART

3012-1 SPRINKLER BASE PRESSURE-US

	psi				
	30	35	40	45	50
#7 Nozzle - Lime (7/64")					
Flow (gpm)	1.84	1.99	2.12	2.25	2.37
Diameter at 1.5 ft ht (ft)	71	74	77	80	82
#8 Nozzle - Lavender (1/8")					
Flow (gpm)	2.42	2.62	2.79	2.97	3.12
Diameter at 1.5 ft ht (ft)	73	76	79	82	84
#9 Nozzle - Grey (9/64")					
Flow (gpm)	3.08	3.33	3.56	3.78	3.98
Diameter at 1.5 ft ht (ft)	75	78	81	84	86
#10 Nozzle - Turquoise (5/32")					
Flow (gpm)	3.82	4.13	4.41	4.68	4.93
Diameter at 1.5 ft ht (ft)	76	79	82	85	87

3023-1 SPRINKLER BASE PRESSURE-US

	psi				
	30	35	40	45	50
#7 Nozzle - Lime (7/64")					
Flow (gpm)	1.84	1.99	2.12	2.25	2.37
Diameter at 1.5 ft ht (ft)	80	82	84	86	87
Diameter at 6.0 ft ht (ft)	83	84	85	86	88
#8 Nozzle - Lavender (1/8")					
Flow (gpm)	2.42	2.62	2.79	2.97	3.12
Diameter at 1.5 ft ht (ft)	83	85	86	87	88
Diameter at 6.0 ft ht (ft)	86	87	88	89	90
#9 Nozzle - Grey (9/64")					
Flow (gpm)	3.08	3.33	3.56	3.78	3.98
Diameter at 1.5 ft ht (ft)	85	87	88	90	91
Diameter at 6.0 ft ht (ft)	87	89	90	91	92
#10 Nozzle - Turquoise (5/32")					
Flow (gpm)	3.82	4.13	4.41	4.68	4.93
Diameter at 1.5 ft ht (ft)	87	89	90	91	92
Diameter at 6.0 ft ht (ft)	88	90	92	93	94

3023-2 SPRINKLER BASE PRESSURE-US

	psi				
	30	35	40	45	50
7x4 #7 Range Nozzle x #4 Spreader Nozzle					
Flow (gpm)	3.01	3.25	3.48	3.69	3.89
Diameter at 1.5 ft ht (ft)	80	82	84	86	87
Diameter at 6.0 ft ht (ft)	83	84	85	86	88
8x5 #8 Range Nozzle x #5 Spreader Nozzle					
Flow (gpm)	3.58	3.86	4.13	4.38	4.62
Diameter at 1.5 ft ht (ft)	83	85	86	87	88
Diameter at 6.0 ft ht (ft)	86	87	88	89	90
8x6 #8 Range Nozzle x #6 Spreader Nozzle					
Flow (gpm)	3.84	4.14	4.43	4.70	4.95
Diameter at 1.5 ft ht (ft)	83	85	86	87	88
Diameter at 6.0 ft ht (ft)	86	87	88	89	90
9x5 #9 Range Nozzle x #5 Spreader Nozzle					
Flow (gpm)	4.16	4.50	4.81	5.10	5.38
Diameter at 1.5 ft ht (ft)	85	87	88	90	91
Diameter at 6.0 ft ht (ft)	87	89	90	91	92
9x6 #9 Range Nozzle x #6 Spreader Nozzle					
Flow (gpm)	4.41	4.77	5.10	5.41	5.70
Diameter at 1.5 ft ht (ft)	85	87	88	90	91
Diameter at 6.0 ft ht (ft)	87	89	90	91	92
10x5 #10 Range Nozzle x #5 Spreader Nozzle					
Flow (gpm)	4.97	5.37	5.74	6.09	6.42
Diameter at 1.5 ft ht (ft)	87	89	90	91	92
Diameter at 6.0 ft ht (ft)	88	90	92	93	94

SENNINGER® 40 SERIES

FEATURES:

Senninger's 40 Series impact sprinklers deliver mid-range flows in comparison to the 30 and 50 series models.

- Wide range of nozzle and vane combinations for excellent distribution at all pressures
- Built-in hex wrench for easy in-the-field maintenance
- 23° model available with double nozzle
- Two trajectories available:
12° - ideal for under-tree irrigation
23° - for maximum throw on overhead systems
- Connection: 3/4" NPT male (female also available)
- Flow rates: 3.82 to 12.6 gpm
- Operating pressures: 30 to 60 psi
- Two-year warranty on materials, workmanship and performance
- Color-coded nozzles for easy size identification. Warranted to maintain correct orifice size for five years



SENNINGER® 40 SERIES

PART NO.	DESCRIPTION	BOX	LIST
401213MxxxH	3/4" MPT 12°	50	13.35
401213FxxxH	3/4" MPT w/ F Coupling	50	13.35
401214FxxxH	3/4" MPT w/1" F Coupling	50	13.35
402313MxxxH	3/4" MPT 23° Single Noz.	50	13.35
402313FxxxH	3/4" MPT w/ F Coupling	50	13.35
402314FxxxH	3/4" MPT w/1" F Coupling	50	13.35
402323MxxxH06RR	3/4" MPT 23° Dual Noz	50	15.25
402323FxxxH06RR	3/4" MPT w/ F Coupling	50	15.25
402324FxxxH06RR	3/4" MPT w/1" F Coupling	50	15.25

PERFORMANCE CHART

4012-1 SPRINKLER BASE PRESSURE-US

	psi						
	30	35	40	45	50	55	60
#10 Nozzle - Turquoise (5/32")							
Flow (gpm)	3.82	4.13	4.41	4.68	4.93	5.17	5.40
Diameter at 1.5 ft ht (ft)	73	77	80	83	86	89	91
#11 Nozzle - Yellow (11/64")							
Flow (gpm)	4.63	5.00	5.34	5.67	5.98	6.27	6.55
Diameter at 1.5 ft ht (ft)	76	80	83	86	89	92	94
#12 Nozzle - Red (3/16")							
Flow (gpm)	5.52	5.97	6.37	6.76	7.13	7.48	7.81
Diameter at 1.5 ft ht (ft)	78	82	85	88	91	94	96
#13 Nozzle - White (13/64")							
Flow (gpm)	6.50	7.02	7.49	7.95	8.38	8.80	9.19
Diameter at 1.5 ft ht (ft)	80	84	87	90	93	96	98
#14 Nozzle - Blue (7/32")							
Flow (gpm)	7.49	8.09	8.63	9.17	9.66	10.1	10.6
Diameter at 1.5 ft ht (ft)	82	86	89	93	96	99	101

4023-1 SPRINKLER BASE PRESSURE-US

	psi						
	30	35	40	45	50	55	60
#10 Nozzle - Turquoise (5/32")							
Flow (gpm)	3.82	4.13	4.41	4.68	4.93	5.17	5.40
Diameter at 1.5 ft ht (ft)	86	89	91	93	95	96	97
Diameter at 6.0 ft ht (ft)	92	94	96	97	98	99	100
#11 Nozzle - Yellow (11/64")							
Flow (gpm)	4.63	5.00	5.34	5.67	5.98	6.27	6.55
Diameter at 1.5 ft ht (ft)	89	92	94	96	98	99	100
Diameter at 6.0 ft ht (ft)	94	96	98	100	102	103	104
#12 Nozzle - Red (3/16")							
Flow (gpm)	5.52	5.97	6.37	6.76	7.13	7.48	7.81
Diameter at 1.5 ft ht (ft)	92	95	97	99	101	102	103
Diameter at 6.0 ft ht (ft)	97	99	101	103	105	107	108
#13 Nozzle - White (13/64")							
Flow (gpm)	6.50	7.02	7.49	7.95	8.38	8.80	9.19
Diameter at 1.5 ft ht (ft)	94	97	99	101	103	104	105
Diameter at 6.0 ft ht (ft)	100	103	106	109	112	115	117
#14 Nozzle - Blue (7/32")							
Flow (gpm)	7.49	8.09	8.63	9.17	9.66	10.1	10.6
Diameter at 1.5 ft ht (ft)	96	99	101	103	105	106	107
Diameter at 6.0 ft ht (ft)	102	106	110	114	118	122	125

4023-2 SPRINKLER BASE PRESSURE-US

	psi						
	30	35	40	45	50	55	60
10x6 #10 Range Nozzle x #6 Spreader Nozzle							
Flow (gpm)	5.25	5.67	6.07	6.43	6.78	7.11	7.43
Diameter at 1.5 ft ht (ft)	86	89	91	93	95	96	97
Diameter at 6.0 ft ht (ft)	92	94	96	97	98	99	100
11x6 #11 Range Nozzle x #6 Spreader Nozzle							
Flow (gpm)	6.10	6.59	7.05	7.47	7.88	8.26	8.63
Diameter at 1.5 ft ht (ft)	89	92	94	96	98	99	100
Diameter at 6.0 ft ht (ft)	94	96	98	100	102	103	104
12x6 #12 Range Nozzle x #6 Spreader Nozzle							
Flow (gpm)	6.89	7.54	8.07	8.55	9.02	9.46	9.88
Diameter at 1.5 ft ht (ft)	92	95	97	99	101	102	103
Diameter at 6.0 ft ht (ft)	97	99	101	103	105	107	108
13x6 #13 Range Nozzle x #6 Spreader Nozzle							
Flow (gpm)	7.93	8.57	9.16	9.72	10.2	10.7	11.2
Diameter at 1.5 ft ht (ft)	94	97	99	101	103	104	105
Diameter at 6.0 ft ht (ft)	100	103	106	109	112	115	117
14x6 #14 Range Nozzle x #6 Spreader Nozzle							
Flow (gpm)	8.90	9.62	10.3	10.9	11.5	12.1	12.6
Diameter at 1.5 ft ht (ft)	96	99	101	103	105	106	107
Diameter at 6.0 ft ht (ft)	102	106	110	114	118	122	125

SENNINGER® 50 SERIES

FEATURES:

Senninger's 50 Series impact sprinklers deliver higher flows than the 30 or 40 series models.

- Wide range of nozzle and vane combinations for excellent distribution at all pressures
- Built-in hex wrench for easy in-the-field maintenance
- 23° model available with double nozzle
- Two trajectories:
 - 12° - ideal for under-tree irrigation
 - 23° - maximum throw on overhead systems
- Connections: 3/4" NPT male (female also available)
- Flow rates: 6.5 to 20.1 gpm
- Operating pressures: 30 to 65 psi
- Two-year warranty on materials, workmanship and performance
- Color-coded nozzles for easy size identification.
- Warranted to maintain correct orifice size for five years



SENNINGER® 50 SERIES				
PART NO.	DESCRIPTION	BOX	LIST	
501213MxxxH	3/4" MPT 12°	50	13.35	
501213FxxxH	3/4" MPT w/ F Coupling	50	13.35	
501214FxxxH	3/4" MPT w/1" F Coupling	50	13.35	
502313MxxxH	3/4" MPT 23° Single Noz.	50	13.35	
502313FxxxH	3/4" MPT w/ F Coupling	50	13.35	
502314FxxxH	3/4" MPT w/1" F Coupling	50	13.35	
502323MxxxH08R	3/4" MPT 23° Dual Noz	50	15.25	
502323FxxxH08R	3/4" MPT w/ F Coupling	50	15.25	
502324FxxxH08R	3/4" MPT w/1" F Coupling	50	15.25	

PERFORMANCE CHART

5012-1 SPRINKLER	psi							5023-1 SPRINKLER	psi							5023-2 SPRINKLER	psi									
	30	35	40	45	50	55	60		65	30	35	40	45	50	55		60	65	30	35	40	45	50	55	60	65
BASE PRESSURE-US								BASE PRESSURE-US								BASE PRESSURE-US										
#13 Nozzle - White (13/64")								#13 Nozzle - White (13/64")								13x8 #13 Range Nozzle x #8 Spreader Nozzle										
Flow (gpm)	6.50	7.02	7.49	7.95	8.36	8.80	9.19	9.55	Flow (gpm)	6.50	7.02	7.49	7.95	8.38	8.80	9.19	9.55	Flow (gpm)	8.23	8.88	9.50	10.1	10.6	11.1	11.6	12.1
Diameter at 1.5 ft ht (ft)	77	83	89	93	97	100	103	105	Diameter at 1.5 ft ht (ft)	92	95	98	100	102	103	104	105	Diameter at 1.5 ft ht (ft)	92	95	98	100	102	103	104	105
#14 Nozzle - Blue (7/32")								#14 Nozzle - Blue (7/32")								Diameter at 6.0 ft ht (ft)										
Flow (gpm)	7.49	8.09	8.63	9.17	9.66	10.1	10.6	11.0	Flow (gpm)	7.49	8.09	8.63	9.17	9.66	10.1	10.6	11.0	Flow (gpm)	99	102	104	106	108	110	112	114
Diameter at 1.5' ht. (ft.)	79	85	91	95	99	102	105	107	Diameter at 1.5 ft ht (ft)	94	98	101	103	105	106	107	108	Diameter at 1.5 ft ht (ft)	94	98	101	103	105	106	107	108
#15 Nozzle - Dark Brown (15/64")								#15 Nozzle - Dark Brown (15/64")								14x8 #14 Range Nozzle x #8 Spreader Nozzle										
Flow (gpm)	8.51	9.19	9.81	10.4	11.0	11.5	12.0	12.5	Diameter at 6.0 ft ht (ft)	101	104	107	110	112	114	116	118	Flow (gpm)	9.35	10.1	10.8	11.5	12.1	12.7	13.2	13.8
Diameter at 1.5 ft ht (ft)	81	87	93	97	101	104	107	109	#16 Nozzle - Orange (1/4")								Diameter at 6.0 ft ht (ft)									
#16 Nozzle - Orange (1/4")								#16 Nozzle - Orange (1/4")								15x8 #15 Range Nozzle x #8 Spreader Nozzle										
Flow (gpm)	9.63	10.4	11.1	11.8	12.4	13.0	13.6	14.2	Flow (gpm)	8.51	9.19	9.81	10.4	11.0	11.5	12.0	12.5	Flow (gpm)	10.3	11.2	11.9	12.7	13.4	14.0	14.6	15.2
Diameter at 1.5 ft ht (ft)	83	89	95	99	103	106	109	111	Diameter at 1.5 ft ht (ft)	96	100	103	106	107	108	109	110	Diameter at 1.5 ft ht (ft)	96	100	103	106	107	108	109	110
#17 Nozzle - Dark Green (17/64")								#17 Nozzle - Dark Green (17/64")								Diameter at 6.0 ft ht (ft)										
Flow (gpm)	10.7	11.6	12.3	13.1	13.8	14.5	15.1	15.7	Diameter at 6.0 ft ht (ft)	102	106	109	112	114	116	118	120	Flow (gpm)	102	106	109	112	114	116	118	120
Diameter at 1.5 ft ht (ft)	85	91	96	100	105	108	111	113	#18 Nozzle - Purple (9/32")								16x8 #16 Range Nozzle x #8 Spreader Nozzle									
#18 Nozzle - Purple (9/32")								#18 Nozzle - Purple (9/32")								Flow (gpm)										
Flow (gpm)	11.9	12.9	13.7	14.6	15.4	16.1	16.8	17.5	Flow (gpm)	9.63	10.4	11.1	11.8	12.4	13.0	13.6	14.2	Flow (gpm)	11.5	12.4	13.3	14.1	14.8	15.5	16.2	16.9
Diameter at 1.5 ft ht (ft)	87	92	97	101	107	110	113	114	Diameter at 1.5 ft ht (ft)	98	102	105	108	109	110	111	112	Diameter at 1.5 ft ht (ft)	98	102	105	108	109	110	111	112
								#17 Nozzle - Dark Green (17/64")								Diameter at 6.0 ft ht (ft)										
								#17 Nozzle - Dark Green (17/64")								Flow (gpm)										
								Flow (gpm)								Flow (gpm)										
								Diameter at 1.5 ft ht (ft)								Diameter at 1.5 ft ht (ft)										
								Diameter at 1.5 ft ht (ft)								Diameter at 6.0 ft ht (ft)										
								Diameter at 6.0 ft ht (ft)								Diameter at 6.0 ft ht (ft)										
								Diameter at 6.0 ft ht (ft)								17x8 #17 Range Nozzle x #8 Spreader Nozzle										
								Diameter at 6.0 ft ht (ft)								Flow (gpm)										
								Diameter at 6.0 ft ht (ft)								Flow (gpm)										
								Diameter at 6.0 ft ht (ft)								Diameter at 1.5 ft ht (ft)										
								Diameter at 6.0 ft ht (ft)								Diameter at 1.5 ft ht (ft)										
								Diameter at 6.0 ft ht (ft)								Diameter at 6.0 ft ht (ft)										
								Diameter at 6.0 ft ht (ft)								Diameter at 6.0 ft ht (ft)										
								Diameter at 6.0 ft ht (ft)								18x8 #18 Range Nozzle x #8 Spreader Nozzle										
								Diameter at 6.0 ft ht (ft)								Flow (gpm)										
								Diameter at 6.0 ft ht (ft)								Flow (gpm)										
								Diameter at 6.0 ft ht (ft)								Diameter at 1.5 ft ht (ft)										
								Diameter at 6.0 ft ht (ft)								Diameter at 1.5 ft ht (ft)										
								Diameter at 6.0 ft ht (ft)								Diameter at 6.0 ft ht (ft)										
								Diameter at 6.0 ft ht (ft)								Diameter at 6.0 ft ht (ft)										

SENNINGER® PART CIRCLE

FEATURES:

Senninger's Part-Circle impact sprinklers allow adjustments to match the desired area of coverage. They are used in agriculture, nurseries, effluent solution disposal, dust suppression and industrial applications

- Distributes water in a 60° to 360° adjustable pattern in 5° increments, no tools needed
- Easily convertible to full-circle operation
- Covered reversing mechanism
- 23° nozzle trajectory for maximum radius of throw
- Wide range of nozzle and vane combinations for excellent distribution at all pressures
- Connection: 3/4" NPT male
- Flow range: 2.42 to 16.1 gpm
- Operating pressures: 30 to 55 psi
- Two-year warranty on materials and workmanship
- Color-coded nozzles for easy size identification are warranted to maintain correct orifice size for five years



SENNINGER® PART CIRCLE

PART NO.	DESCRIPTION	BOX	LIST
3123PC13MxxxH	3/4" MPT	50	30.45
3123PC13FxxxH	3/4" MPT w/ 3/4" FPT	50	30.45
3123PC14FxxxH	3/4" MPT w/ 1" FPT	50	30.45
4123PC13MxxxH	3/4" MPT	50	30.45
4123PC13FxxxH	3/4" MPT w/ 3/4" FPT	50	30.45
4123PC14FxxxH	3/4" MPT w/ 1" FPT	50	30.45
5123PC13MxxxH	3/4" MPT	50	30.45
5123PC13FxxxH	3/4" MPT w/ 3/4" FPT	50	30.45
5123PC14FxxxH	3/4" MPT w/ 1" FPT	50	30.45

PERFORMANCE CHART

3123PC SPRINKLER BASE PRESSURE-US	psi						4123PC SPRINKLER BASE PRESSURE-US	psi						5123PC SPRINKLER BASE PRESSURE-US	psi					
	30	35	40	45	50	55		30	35	40	45	50	55		30	35	40	45	50	55
#8 Nozzle - Lavender (1/8")							#10 Nozzle - Turquoise (5/32")							#13 Nozzle - White (13/64")						
Flow (gpm)	2.42	2.62	2.79	2.97	3.12	3.28	Flow (gpm)	3.82	4.13	4.41	4.68	4.93	5.17	Flow (gpm)	6.50	7.02	7.49	7.95	8.38	8.80
Radius at 1.5 ft ht (ft)	38	39	40	41	42	42	Radius at 1.5 ft ht (ft)	41	43	44	45	45	46	Radius at 1.5 ft ht (ft)	45	47	48	50	51	51
Radius at 3.0 ft ht (ft)	40	41	42	42	43	43	Radius at 3.0 ft ht (ft)	41	44	45	46	46	47	Radius at 3.0 ft ht (ft)	46	48	49	50	51	52
#9 Nozzle - Grey (9/64")							#11 Nozzle - Yellow (11/64")							#14 Nozzle - Blue (7/32")						
Flow (gpm)	3.08	3.33	3.56	3.78	3.98	4.18	Flow (gpm)	4.63	5.00	5.34	5.67	5.98	6.27	Flow (gpm)	7.49	8.09	8.63	9.17	9.66	10.10
Radius at 1.5 ft ht (ft)	40	41	42	43	43	44	Radius at 1.5 ft ht (ft)	44	45	46	47	48	48	Radius at 1.5 ft ht (ft)	46	47	49	50	51	52
Radius at 3.0 ft ht (ft)	41	43	44	44	45	45	Radius at 3.0 ft ht (ft)	45	45	47	48	49	49	Radius at 3.0 ft ht (ft)	47	49	51	52	53	54
#10 Nozzle - Turquoise (5/32")							#12 Nozzle - Red (3/16")							#15 Nozzle - Dark Brown (15/64")						
Flow (gpm)	3.82	4.13	4.41	4.68	4.93	5.17	Flow (gpm)	5.52	5.97	6.37	6.76	7.13	7.48	Flow (gpm)	8.51	9.19	9.81	10.4	11.0	11.5
Radius at 1.5 ft ht (ft)	41	43	44	45	45	46	Radius at 1.5 ft ht (ft)	45	46	48	49	50	51	Radius at 1.5 ft ht (ft)	46	48	50	51	52	53
Radius at 3.0 ft ht (ft)	41	44	45	46	46	47	Radius at 3.0 ft ht (ft)	46	47	49	50	51	51	Radius at 3.0 ft ht (ft)	48	50	52	53	54	56
#13 Nozzle - White (13/64")							#17 Nozzle - Dark Green (17/64")							#16 Nozzle - Orange (1/4")						
Flow (gpm)	6.50	7.02	7.49	7.95	8.38	8.80	Flow (gpm)	10.7	11.6	12.3	13.1	13.8	14.5	Flow (gpm)	9.63	10.4	11.1	11.8	12.4	13.0
Radius at 1.5 ft ht (ft)	45	47	48	50	51	51	Radius at 1.5 ft ht (ft)	47	50	52	54	55	56	Radius at 1.5 ft ht (ft)	47	50	51	53	54	55
Radius at 3.0 ft ht (ft)	46	48	49	50	51	52	Radius at 3.0 ft ht (ft)	48	51	53	55	56	57	Radius at 3.0 ft ht (ft)	48	51	53	55	56	57
#18 Nozzle - Purple (9/32")																				
Flow (gpm)	11.9	12.9	13.7	14.6	15.4	16.1														
Radius at 1.5 ft ht (ft)	47	50	53	55	56	57														
Radius at 3.0 ft ht (ft)	49	52	54	56	58	59														

SENNINGER® 70 SERIES

The 70 Series full-circle impacts distribute water at higher flows over a large diameter.



FEATURES:

- Double nozzle and spread drive models available
- Outlasts and costs less than brass sprinklers
- Built-in hex wrench for easy in-the-field maintenance
- Connections: 1" NPT male
- Flow rates: 8.66 to 39.1 gpm
- Operating pressures: 40 to 70 psi
- Two-year warranty on materials, workmanship and performance
- Color-coded nozzles for easy size identification.
Warranted to maintain correct orifice size for five years



SENNINGER® 70 SERIES

PART NO.	DESCRIPTION	BOX	LIST
7025R14MxxxL	1" MPT Single Nozzle	25	63.25
7025R13FxxxL	1" MPT w/ 3/4" FPT	20	63.25
7025R14FxxxL	1" MPT w/ 1" FPT	20	63.25
7025R15FxxxL	1" MPT w/ 1 1/4" FPT	20	63.25
7025R24MxxxLxxxH	1" MPT Dual Nozzle	25	65.15
7025R23FxxxLxxxH	1" MPT w/ 3/4" FPT	20	65.15
7025R24FxxxLxxxH	1" MPT w/ 1" FPT	20	65.15
7025R25FxxxLxxxH	1" MPT w/ 1 1/4" FPT	20	65.15

PERFORMANCE CHART

7025RD-1 SPRINKLER BASE PRESSURE-US	psi				7025RD-2 SPRINKLER BASE PRESSURE-US	psi									
	40	50	60	70		40	50	60	70						
#14 Nozzle (7/32")					14x8 #14 Range Nozzle x #8 Spreader Nozzle					20x12 #20 Range Nozzle x #12 Spreader Nozzle					
Flow (gpm)	8.66	9.69	10.6	11.5	Flow (gpm)	11.4	12.7	13.9	15.1	Flow (gpm)	22.8	25.5	27.9	30.2	
Diameter at 1.5 ft ht (ft)	111	115	119	123	Diameter at 1.5 ft ht (ft)	111	115	119	123	Diameter at 1.5 ft ht (ft)	130	137	146	153	
Diameter at 6.0 ft ht (ft)	118	124	128	130	Diameter at 6.0 ft ht (ft)	118	124	128	130	Diameter at 6.0 ft ht (ft)	137	143	151	155	
#16 Nozzle (1/4")					16x8 #16 Range Nozzle x #8 Spreader Nozzle					22x10 #22 Range Nozzle x #10 Spreader Nozzle					
Flow (gpm)	11.4	12.8	14.0	15.1	Flow (gpm)	14.3	16.0	17.5	18.9	Flow (gpm)	24.5	27.4	30.0	32.4	
Diameter at 1.5 ft ht (ft)	117	123	129	133	Diameter at 1.5 ft ht (ft)	117	123	129	133	Diameter at 1.5 ft ht (ft)	133	148	157	162	
Diameter at 6.0 ft ht (ft)	126	131	136	138	Diameter at 6.0 ft ht (ft)	126	131	136	138	Diameter at 6.0 ft ht (ft)	141	150	159	164	
#18 Nozzle (9/32")					18x8 #18 Range Nozzle x #8 Spreader Nozzle					22x12 #22 Range Nozzle x #12 Spreader Nozzle					
Flow (gpm)	14.2	15.9	17.4	18.8	Flow (gpm)	17.0	19.0	20.8	22.5	Flow (gpm)	26.3	29.4	33.6	34.8	
Diameter at 1.5 ft ht (ft)	124	129	139	144	Diameter at 1.5 ft ht (ft)	124	129	139	144	Diameter at 1.5 ft ht (ft)	133	148	157	162	
Diameter at 6.0 ft ht (ft)	132	137	144	147	Diameter at 6.0 ft ht (ft)	132	137	144	147	Diameter at 6.0 ft ht (ft)	141	150	159	164	
#20 Nozzle (5/16")					18x10 #18 Range Nozzle x #10 Spreader Nozzle					24x12 #24 Range Nozzle x #12 Spreader Nozzle					
Flow (gpm)	17.1	19.2	21.0	22.7	Flow (gpm)	18.2	20.3	22.3	24.0	Flow (gpm)	29.5	33.0	36.2	39.1	
Diameter at 1.5 ft ht (ft)	130	137	146	153	Diameter at 1.5 ft ht (ft)	124	129	139	144	Diameter at 1.5 ft ht (ft)	138	151	160	169	
Diameter at 6.0 ft ht (ft)	137	143	151	155	Diameter at 6.0 ft ht (ft)	132	137	144	147	Diameter at 6.0 ft ht (ft)	145	155	164	170	
#22 Nozzle (11/32")					20x10 #20 Range Nozzle x #10 Spreader Nozzle										
Flow (gpm)	20.5	22.9	25.1	27.1	Flow (gpm)	20.9	23.4	25.7	27.7						
Diameter at 1.5 ft ht (ft)	133	148	157	162	Diameter at 1.5 ft ht (ft)	130	137	146	153						
Diameter at 6.0 ft ht (ft)	141	150	159	164	Diameter at 6.0 ft ht (ft)	137	143	151	155						
#24 Nozzle (3/8")															
Flow (gpm)	23.9	26.7	29.3	31.6											
Diameter at 1.5 ft ht (ft)	138	151	160	169											
Diameter at 6.0 ft ht (ft)	145	155	164	170											

SENNINGER® 80 SERIES

The 80 Series are Senninger's largest impact. The sprinklers are designed for maximum efficiency at high flow rates.



FEATURES:

- Single and double nozzle designs available
- Double nozzle available in range or spreader drive
- Outlasts and costs less than brass sprinklers
- Connections: 1 ¼" NPT male, 1 ½" NPT male
- Flow rates: 25.2 to 103.2 gpm
- Operating pressures: 40 to 70 psi
- Built-in hex wrench for easy in-the-field maintenance
- Two-year warranty on materials, workmanship and performance
- Nozzles warranted to maintain correct orifice size for five years



SENNINGER® 80 SERIES

PART NO.	DESCRIPTION	BOX	LIST
8025HR15MxxxK	1 1/4" MPT Single Nozzle	20	149.25
8025HR14FxxxK	1 1/4" MPT w/ 1" FPT	20	149.25
8025HR15FxxxK	1 1/4" MPT w/ 1 1/4" FPT	20	149.25
8025HR16MxxxK	1 1/2" MPT	20	149.25
8025HR25MxxxKxxxH	1 1/4" MPT Dual Nozzle	20	151.15
8025HR24FxxxKxxxH	1 1/4" MPT w/ 1" FPT	20	151.15
8025HR25FxxxKxxxH	1 1/4" MPT w/ 1 1/4" FPT	20	151.15
8025HR26MxxxKxxxH	1 1/2" MPT	20	151.15
8025HS25MxxxKxxxH	1 1/4" MPT Dual Spreader Noz	20	151.15
8025HS24FxxxKxxxH	1 1/4" MPT w/ 1" FPT	20	151.15
8025HS25FxxxKxxxH	1 1/4" MPT w/ 1 1/4" FPT	20	151.15
8025HS26MxxxKxxxH	1 1/2" MPT	20	151.15
80NEX	Range Nozzle Extension	240	6.00

PERFORMANCE CHART

8025HR-1 SPRINKLER BASE PRESSURE-US

#24 Nozzle (3/8")	#32 Nozzle (1/2")
Flow (gpm)	Flow (gpm)
Diameter at 1.5 ft ht (ft)	Diameter at 1.5 ft ht (ft)
Diameter at 6.0 ft ht (ft)	Diameter at 6.0 ft ht (ft)
#26 Nozzle (13/32")	#34 Nozzle (17/32")
Flow (gpm)	Flow (gpm)
Diameter at 1.5 ft ht (ft)	Diameter at 1.5 ft ht (ft)
Diameter at 6.0 ft ht (ft)	Diameter at 6.0 ft ht (ft)
#28 Nozzle (7/16")	#36 Nozzle (9/16")
Flow (gpm)	Flow (gpm)
Diameter at 1.5 ft ht (ft)	Diameter at 1.5 ft ht (ft)
Diameter at 6.0 ft ht (ft)	Diameter at 6.0 ft ht (ft)
#30 Nozzle (15/32")	#38 Nozzle (19/32")
Flow (gpm)	Flow (gpm)
Diameter at 1.5 ft ht (ft)	Diameter at 1.5 ft ht (ft)
Diameter at 6.0 ft ht (ft)	Diameter at 6.0 ft ht (ft)
#40 Nozzle (5/8")	
Flow (gpm)	
Diameter at 1.5 ft ht (ft)	
Diameter at 6.0 ft ht (ft)	

8025HR-2 SPRINKLER BASE PRESSURE-US

	psi			
	40	50	60	70
26X14 #26 Range Nozzle x #14 Spreader Nozzle				
Flow (gpm)	39.4	44.0	48.2	52.1
Diameter at 1.5 ft ht (ft)	142	152	161	166
Diameter at 6.0 ft ht (ft)	157	164	169	173
28x14 #28 Range Nozzle x #14 Spreader Nozzle				
Flow (gpm)	42.0	46.9	51.4	55.6
Diameter at 1.5 ft ht (ft)	148	157	166	171
Diameter at 6.0 ft ht (ft)	161	168	173	177
30x14 #30 Range Nozzle x #14 Spreader Nozzle				
Flow (gpm)	45.9	51.4	56.3	60.8
Diameter at 1.5 ft ht (ft)	153	162	170	175
Diameter at 6.0 ft ht (ft)	165	172	177	181
32x16 #32 Range Nozzle x #16 Spreader Nozzle				
Flow (gpm)	53.7	60.0	65.8	71.0
Diameter at 1.5 ft ht (ft)	156	165	173	179
Diameter at 6.0 ft ht (ft)	169	176	181	185
34x16 #34 Range Nozzle x #16 Spreader Nozzle				
Flow (gpm)	59.2	66.2	72.5	78.3
Diameter at 1.5 ft ht (ft)	159	168	176	183
Diameter at 6.0 ft ht (ft)	172	179	184	188
36x16 #36 Range Nozzle x #16 Spreader Nozzle				
Flow (gpm)	65.1	72.7	79.7	86.1
Diameter at 1.5 ft ht (ft)	161	170	178	187
Diameter at 6.0 ft ht (ft)	175	182	187	191
38x18 #38 Range Nozzle x #18 Spreader Nozzle				
Flow (gpm)	71.7	80.1	87.8	94.9
Diameter at 1.5 ft ht (ft)	163	172	180	190
Diameter at 6.0 ft ht (ft)	178	185	190	194
40x18 #40 Range Nozzle #18 Spreader Nozzle				
Flow (gpm)	78.0	87.2	95.6	103.2
Diameter at 1.5 ft ht (ft)	165	174	182	192
Diameter at 6.0 ft ht (ft)	180	187	192	196

SENNINGER® NOZZLES

SENNINGER® 80 SERIES

PART NO.	DESCRIPTION	LIST
NZINxx	"Nozzle Insert, color-coded, sizes #06 - 18 (3/32" - 9/32") for: 20, 30, 40 & 50 series impacts	.85
NZVxx	Nozzle-vane combo, sizes #6-10 (3/32" - 5/32") for: 20 & 30 impact sprinklers	1.25
NZVxxQ	Square-orifice nozzle-vane combo, sizes #6-9 (3/32" - 9/64"), for: 20 & 30 impact sprinklers	1.25
HTNZVxx	Hand-Tight Nozzle-Vane w/ O-ring, color-coded sizes #5-18 (5/64" - 9/32") for: 20, 30, 40 and 50 impact sprinklers	2.00
HTNZVxxQ	Hand-Tight Nozzle-Vane Square Orifice w/ O-ring, color-coded, sizes #05 - 10 (5/64" - 5/32") for: 20 and 30 series impact sprinklers	2.00
HTNZPLUG	Hand Tight Nozzle Plug (black)	2.00
70NZxx	Range Nozzle, sizes #14-26 (7/32" - 13/32") for: 70 series impact sprinklers	2.60
80NZxx	Range Nozzle, sizes #22-40 (11/32" - 5/8") for: 80 series impact sprinkler	4.15

IMPACTS	MINIMUM	MAXIMUM
	Nozzle Size	Nozzle Size
20 Series Impacts	#6 Nozzle - Gold 3/32" (2.38 mm)	#9 Nozzle - Grey 9/64" (3.57 mm)
Compact Impact	#9 Nozzle - Grey 9/64" (3.57 mm)	#12 Nozzle - Red 3/16" (4.76 mm)
WedgeDrive	#15 Nozzle - Beige 5/64" (1.98 mm)	#9 Nozzle - Grey 9/64" (3.57 mm)
30 Series Impacts (including Part-Circle 3123)	#7 Nozzle - Lime 7/64" (2.78 mm)	#10 Nozzle - Turquoise 5/32" (3.97 mm)
40 Series Impacts (including Part-Circle 4123)	#10 Nozzle - Turquoise 5/32" (3.97 mm)	#14 Nozzle - Blue 7/32" (5.56 mm)
50 Series Impacts (including Part-Circle 5123)	#13 Nozzle - White 13/64" (5.16 mm)	#18 Nozzle - Purple 9/32" (7.14 mm)

ORIFICE DIAMETER

#4 Light Blue	1/16 (0.063) inch	(1.59 mm)
#5 Beige	5/64 (0.078) inch	(1.98 mm)
#6 Gold	3/32 (0.094) inch	(2.38 mm)
#7 Lime	7/64 (0.109) inch	(2.78 mm)
#8 Lavender	1/8 (0.125) inch	(3.18 mm)
#9 Grey	9/64 (0.141) inch	(3.57 mm)
#10 Turquoise	5/32 (0.156) inch	(3.97 mm)
#11 Yellow	11/64 (0.172) inch	(4.37 mm)
#12 Red	3/16 (0.188) inch	(4.76 mm)
#13 White	13/64 (0.203) inch	(5.16 mm)
#14 Blue	7/32 (0.219) inch	(5.56 mm)
#15 Dk. Brown	15/64 (0.234) inch	(5.95 mm)
#16 Orange	1/4 (0.250) inch	(6.35 mm)
#17 Dk. Green	17/64 (0.266) inch	(6.75 mm)
#18 Purple	9/32 (0.281) inch	(7.14 mm)
#19 Black	19/64 (0.297) inch	(7.54 mm)
#20 Dk. Turquoise	5/16 (0.313) inch	(7.94 mm)
#21 Mustard	21/64 (0.328) inch	(8.33 mm)
#22 Maroon	11/32 (0.344) inch	(8.73 mm)
#23 Cream	23/64 (0.359) inch	(9.13 mm)
#24 Dk. Blue	3/8 (0.375) inch	(9.53 mm)
#25 Copper	25/64 (0.391) inch	(9.92 mm)
#26 Bronze	13/32 (0.406) inch	(10.32 mm)

NOZZLES



1/8" NPT NOZZLES FOR 1/2"

PART #	SIZE	LIST
WN-1-01	1/16"	.80
WN-1-05	5/64"	.80
WN-1-06	3/32"	.80
WN-1-07	7/64"	.80
WN-1-08	1/8"	.80
WN-1-09	9/64"	.80
WN-1-10	5/32"	.80



1/8" UNF NOZZLES FOR 1/2"

PART #	SIZE	LIST
DN-1-01	1/16"	.64
DN-1-05	5/64"	.64
DN-1-06	3/32"	.64
DN-1-07	7/64"	.64
DN-1-08	1/8"	.64
DN-1-09	9/64"	.64
DN-1-10	5/32"	.64



PLUGS

PART #	SIZE	LIST
RP-1	Brass 1/8" UNF Plug	2.00
WP-1	Brass 1/8" NPT Plug	1.35
RP-3	Brass 1/4" Plug	1.75
PP-1	Plastic 1/8" NPT Plug	.82
PP-3	Plastic 1/4" NPT Plug	.82



NOZZLES FOR 3/4" SPRINKLER

PART #	SIZE	LIST
DN-3-07	7/64"	.98
DN-3-08	1/8"	.98
DN-3-09	9/64"	.98
DN-3-10	5/32"	.98
DN-3-11	11/64"	.98
DN-3-12	3/16"	.98
DN-3-13	13/64"	.98
DN-3-14	7/32"	.98
DN-3-15	15/64"	.98
DN-3-16	1/4"	.98

SPREADER NOZZLES

PART #	SIZE	LIST
DN-3SS-06	3/32" 7°	3.50
DN-3SS-07	7/64" 7°	3.50
DN-3SS-08	1/8" 7°	3.50
DN-3SS-09	9/64" 7°	3.50
DN-3SS-10	5/32" 7°	3.50



NOZZLES FOR 1" SPRINKLER

PART #	SIZE	LIST
DN-4-14	7/32"	4.80
DN-4-16	1/4"	4.80
DN-4-18	9/32"	4.80
DN-4-20	5/16"	4.80
DN-4-22	11/32"	4.80
DN-4-24	3/8"	4.80
DN-4-26	13/32"	4.80



AQUA BURST™ NOZZLE TOOL

PART #	SIZE	LIST
BCT	For 3/4"	28.00
BCT-50	For 1/2"	28.00



NOZZLES FOR 1 1/4" SPRINKLER

PART #	SIZE	LIST
DN-5-22	11/32"	11.78
DN-5-24	3/8"	11.78
DN-5-26	13/32"	11.78
DN-5-28	7/16"	11.78
DN-5-30	15/32"	11.78



NOZZLES FOR 1 1/4" SPRINKLER

PART #	SIZE	LIST
DN-5-32	1/2"	11.78
DN-5-34	17/32"	11.78
DN-5-36	9/16"	11.78
DN-5-40	5/8"	11.78
DN-5-44	11/16"	11.78

SPRINKLER BEARINGS AND PARTS



HF20BRNG

PART #	SIZE	LIST
HF20BRNG	1/2"	9.81
Fits Aqua Burst® Nelson™ & Rain Bird™		



HF30BRNG

PART #	SIZE	LIST
HF30BRNG	3/4"	11.10
Fits Aqua Burst® Nelson™ & Rain Bird™		



AL30BRNG

PART #	SIZE	LIST
AL20BRNG	1/2"	Call
AL30BRNG	3/4"	12.30



X35BRNG

PART #	SIZE	LIST
X35BRNG	3/4"	27.65
X35-RW	Reverse Wire	2.00



X65BRNG

PART #	SIZE	LIST
X65BRNG	1"	51.80
X65-RW	Reverse Wire	2.00



X85BRNG

PART #	SIZE	LIST
X85BRNG	1 1/4"	96.00



DIFFUSER ARMS

PART #	SIZE	LIST
X35-DIFARM	3/4"	5.00
X65-DIFARM	1"	5.00



VANE STRAIGHTENERS

PART #	SIZE	LIST
X65-VS	1"	8.10
X85-VS	1 1/4"	10.00



BEARING WASHERS

PART #	SIZE	LIST
HF20-BWS	1/2"	1.00
HF30-BWS	3/4"	1.00
X65-BWS	1"	5.00
X85-BWS	1 1/4"	10.00

QUICK COUPLERS & SPRINKLER STANDS



QUICK COUPLER

PART #	SIZE	LIST
LRC075	3/4"	39.00
LRC100	1"	63.15
LRC150	1 1/2"	171.95



QUICK COUPLER KEY

PART #	SIZE	LIST
K075	3/4"	24.70
K100	1"	52.00
K150	1 1/2"	106.05



QUICK COUPLING SWIVELS

PART #	SIZE	LIST
QCS075	3/4"	28.35
QCS100	1"	36.80
QCS1510	1 1/2" x 1"	61.45



KEY-LOCK COUPLER

PART #	SIZE	LIST
KLC75-C	3/4"	8.80
KLC1-C	1"	9.20



KEY-LOCK KEY

PART #	SIZE	LIST
KLC75-K	3/4"	3.80
KLC1-K	1"	4.10



SQUIRTLE

PART #	SIZE	LIST
SQUIRTLE.75	3/4" NPT x Hose	27.20
Can be connected in series		



BUTTERFLY STAND

PART #	SIZE	LIST
ST50B	1/2" Butterfly	19.60
ST75B	3/4" Butterfly	19.60



HEART STAND

PART #	SIZE	LIST
ST50H	1/2" Heart	19.60
ST75H	3/4" Heart	19.60

SPRINKLER STANDS



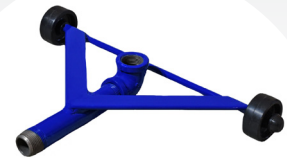
LARGE FLOWTHRU

PART #	DESCRIPTION	LIST
STFT-L	Flowthru Large Riser Stand	Call
For 1" or 1 1/4" Sprinklers, MPT Riser 1 1/2" MPT x MPT Flow Through 26" L x 24" W x 19 1/2" H		



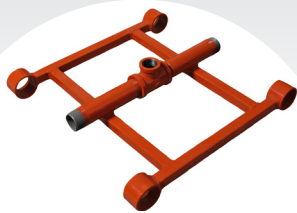
GIANT ROLLING TRIPOD

PART #	DESCRIPTION	LIST
STTP-L	Giant Rolling Tripod	Call
For 3/4" or 1" Sprinklers 1 1/4" MPT Inlet and Outlet 24" W x 16" H		



ROLLING SPRINKLER STAND

PART #	SIZE	LIST
ST-R	Rolling Spinkler Stand	Call
For 1/2" and 3/4" Sprinklers 3/4" MPT Inlet and 3/4" FPT Outlet		



SMALL FLOWTHRU

PART #	DESCRIPTION	LIST
STFT-S	Flowthru Small Riser Stand	Call
For 1/2" and 3/4" Sprinklers 1" Flowthru MPT Inlet and Outlet 14 1/2" W x 15" Long		



STATIONARY SMALL TRIPOD

PART #	DESCRIPTION	LIST
STTP-S	Small Tripod	Call
For 1/2" and 3/4" Sprinklers 1" MPT Inlet and Outlet 18" L x 12 1/2" H		



AQUAMATE HOSE REELS

PART #	DESCRIPTION	LIST
Aqua-Mate400	400' of hose	Call
Aqua-Mate500	500' of hose	
Aqua-Mate600	600' of hose	
Aqua-Mate700	700' of hose	
1-1/2" inlet and outlet		

Senninger®

NON-IMPACT AND MICRO SPRINKLERS



SLIP



SENNINGER® SMOOTH DRIVE™

SENNINGER® FOGGERS

PART #	DESCRIPTION	LIST
SD2214M2MXXX	1/2" MPT Low Angle #6-8	9.95
SD2214M234SXXX	1/2" Socket x 3/4" Socket x 1" Spigot Low Angle #6-8	9.95
SD2223M2MXXX	1/2" MPT High Angle #6-8	9.95
SD2223M234SXXX	1/2" Socket x 3/4" Socket x 1" Spigot High Angle #6-8	9.95

PART #	SIZE	LIST
FOGW500NPT	1/4" MPT	3.40
FOGW250BRB	1/4" Barb	3.40



SENNINGER® MICRO SPRINKLERS

SENNINGER® MISTER™

PART #	DESCRIPTION	BOX	LIST
MISIC500NPTXXX	Inverted 1/2" MPT #3-6 Noz	100	2.15
MISIC250BRBXXX	Inverted 1/4" Barb #3-6 Noz	100	2.15
MISUC500NPTXXX	Upright 1/2" MPT #2-4 Noz	100	2.15
MISUC250BRBXXX	Upright 1/4" Barb #2-4 Noz	100	2.15

PART #	DESCRIPTION	BOX	LIST
MRI500NPT08DB	Inverted 1/2" MPT Check Valve #8 Noz	100	3.40
MRI250BRB08DB	Inverted 1/4" Barb Check Valve #8 Noz	100	3.40
MR500NPT20B	Upright 1/2" MPT #20 Noz	100	3.40
MR250BRB20B	Upright 1/4" Barb #20 Noz	100	3.40



SENNINGER® T-SPRAY™

SENNINGER® TRIAD™

SENNINGER® SUPER SPRAY®

PART #	SIZE	LIST
TSPB206	1/2" MPT #6 360° Gold	2.00
TSPB207	1/2" MPT #7 360° Lime	2.00
TSPB208	1/2" MPT #8 360° Lavender	2.00
TSPB208CV	1/2" MPT #8 High Angle 360° Purple	2.00

PART #	SIZE	LIST
TRI3SS040R040R040R	3/4" Slip	4.40
TRINZ040R	#4 Noz	.70
TRI3S	Base	3.15

PART #	SIZE	LIST
SuperSpray*	3/4" MPT w/Noz/Pad	7.00
SSBRASMUP3	Bracket	4.35
UP3NZXXX	Nozzle	1.85